

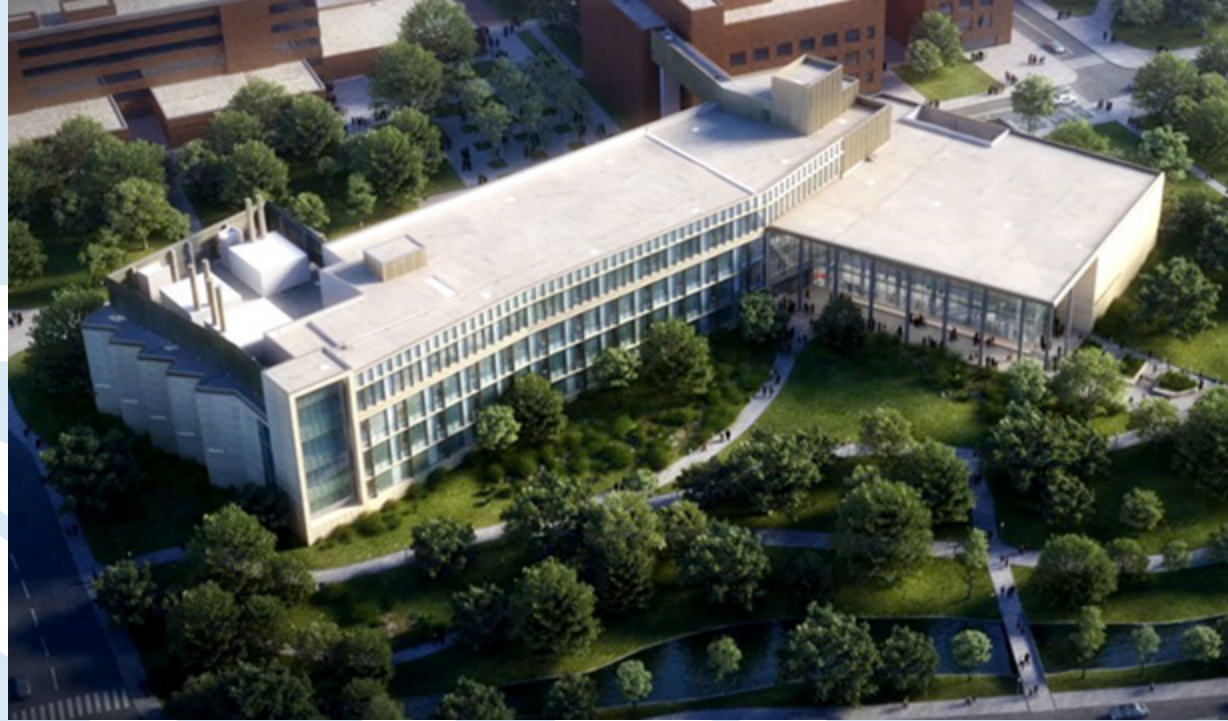
Teamwork Evaluation 2.0 in Engineering Problem Solving

Assessing Teamwork at UTA

Kendra L. Wallis, PhD.

Assistant Professor of Instruction

Introduction



Covid-19 UTA Community Support

April 2020



Importance of Assessing Teamwork

- Employers value teamwork skills
- Engineers work in teams
- Develop teamwork skills in college
- Assessing teamwork is challenging



Defining a Team

Teams are composed of individuals who:

- have a shared collective identity
- have common goals
- are interdependent in terms of their assigned tasks or outcomes
- have distinctive roles within the team
- are part of a larger organizational context that influences their work and that they in turn can influence

Methods and Materials

The Students

- Engineering Problem Solving Course
- Freshman level, high-enrollment
- Team project
- 3-member teams
- Voluntary self and peer assessment



The Survey – 1.0

Based on AAC&U VALUE Rubric

- Spring 2019: ~500 students
- 5 Domains
- Ratings from 1 to 4 correspond to year in school, i.e., 1 = Freshman, 4 = Senior
- Averages 3.5 – 4 indicate senior-level work
- Question validity of assessment

The Survey – 2.0

TeamUP Rubric

- Fall 2019: ~900 responses; 195 3-member teams
- 5 Domains: 7 questions each
- Color scale instead of points
 - Green = exceeds minimum expectations
 - Yellow = meets minimum expectations
 - Amber = does not meet minimum expectations
 - Red = unacceptable behavior
- Reduce tendency to rate all 1's



Results

All Teamwork Skills

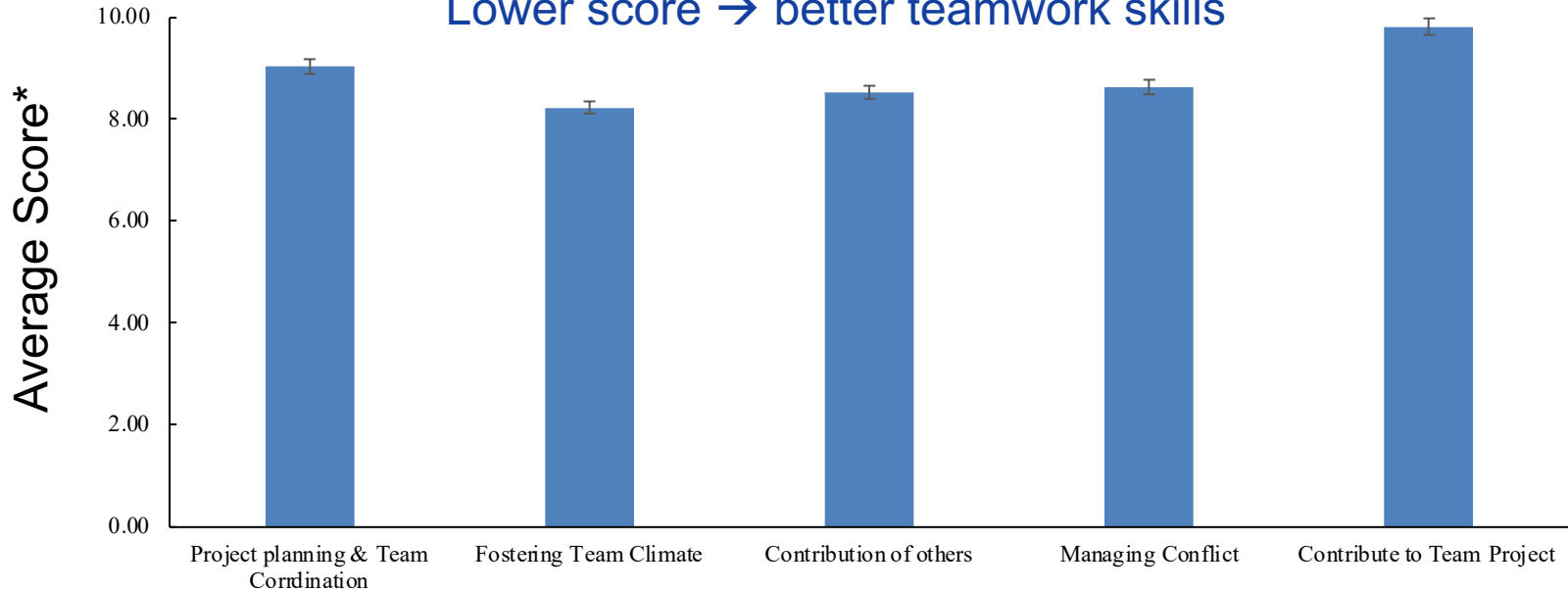
Green (meets expectations) = 1; Red (unacceptable behavior) =4
7 Questions per domain (min = 7; max = 28)

Project Planning & Team Coordination	9.04
Fostering Team Climate	8.24
Facilitating Contribution of Others	8.54
Managing Conflict	8.64
Contributing to Team Project	9.82

Teamwork Skills in 5 Domains

Average Scores for Teams of 3

Lower score → better teamwork skills



*Green (meets expectations) = 1; Red (needs to change unacceptable behavior) =4
7 Questions per domain (min = 7; max = 28)

Teamwork Skills by Team Gender Composition

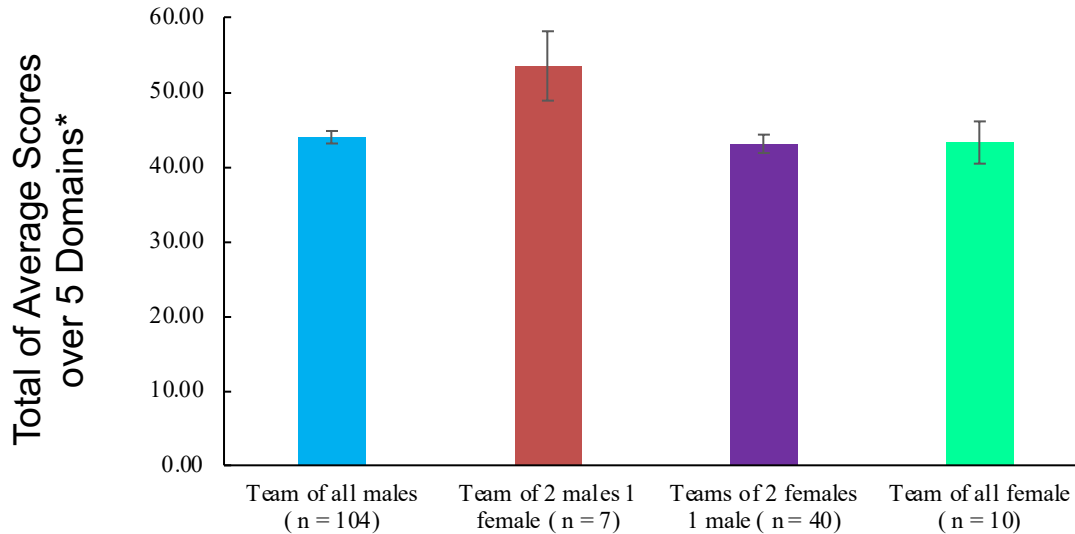
Green (meets expectations) = 1; Red (unacceptable behavior) =4
Average over 5 domains (min = 36; max = 144)

All male	43.93
Two males, one female	53.48
Two Females, one male	43.05
All female	43.22



Teamwork Skills by Gender Composition

Average Scores for Teams of 3
Lower score → better teamwork skills



*Green (meets expectations) = 1; Red (needs to change unacceptable behavior) = 4
7 Questions per domain * 5 domains (min = 36; max = 144)

Discussion

Good Teamwork Skills

- Assessment of teamwork skills is difficult
- TeamUP has psychometric validation
- Color scale may increase integrity
- Students believe they are good team mates
- Gender composition seems relatively unimportant except for 2 males, 1 female

Conclusions

Assessment of Teamwork Skills

- Assessment of teamwork skills continues
- Validity of the method still being investigated
- Development of teamwork skills should be intentional
- Gender composition should avoid 1 female with more than 1 male

Future Work

Future Work

Improve TeamUP

- Reduce number of questions
- Maintain color scale
- Look for other variables that might contribute



UNIVERSITY OF TEXAS  ARLINGTON

THANK YOU!