

**SECTION 08 11 16**

**ALUMINUM DOORS AND FRAMES**

**PART 1 – GENERAL**

**1.1 PURPOSE**

- A. This guideline is intended to provide useful information to the Professional Service Provider (PSP) to establish a basis of design. PSP is to apply the principles of this section such that the University of Texas at Arlington (UTA) may achieve a level of quality and consistency in the design and construction of their facilities. Deviations from these guidelines must be approved by UTA and may require justification through Life Cycle Cost (LCC) analysis and submitted to UTA for approval.

**1.2 LESSONS LEARNED AND DESIGN CONSIDERATIONS**

- A. X

**1.3 SECTION INCLUDES**

- A. Interior aluminum glazed wall system.
- B. Aluminum door frames for doors specified in this section.
- C. Glazing.

**1.4 RELATED REQUIREMENTS**

- A. Section 08 71 00 – Door Hardware.
- B. Section 08 80 00 – Glazing: Glass materials for aluminum doors and frames.

**1.5 REFERENCE STANDARDS**

- A. AAMA 609 & 610 – Cleaning and Maintenance Guide for Architecturally Finished Aluminum (Combined Document); current edition.
- B. AAMA 701/702 – Combined Voluntary Specifications for Pile Weatherstrip and Replaceable Fenestration Weatherseals; current edition.
- C. AAMA 2605 - Voluntary Specification, Performance Requirements and Test Procedures for Superior Performing Organic Coatings on Aluminum Extrusions and Panels; current edition.
- D. ASTM A123/A123M - Standard Specification for Zinc (Hot-Dip Galvanized) Coatings on Iron and Steel Products; current edition.
- E. ASTM B209 - Standard Specification for Aluminum and Aluminum-Alloy Sheet and Plate; current edition.
- F. ASTM B209M - Standard Specification for Aluminum and Aluminum-Alloy Sheet and Plate [Metric]; current edition.
- G. ASTM B221 - Standard Specification for Aluminum and Aluminum-Alloy Extruded Bars, Rods, Wire, Profiles, and Tubes; current edition.
- H. ASTM B221M - Standard Specification for Aluminum and Aluminum-Alloy Extruded Bars, Rods, Wire, Profiles, and Tubes [Metric]; current edition.

**1.6 SUBMITTALS**

- A. See Division 01 for submittal procedures.
- B. Product Data: Manufacturer's descriptive literature for each type of door; include information on fabrication methods.
- C. Shop Drawings: Include elevations of each opening type.
  - 1. Verify dimensions by field measurements before fabrication and indicate on shop drawings.
- D. Verification Samples: Actual pieces of products in each finish specified, not less than 6 inches square or 6 inches long for linear components. For finishes subject to color variation, include not less than two samples illustrating extreme range to be anticipated.
- E. Warranty: Submit manufacturer warranty and ensure that forms have been completed in Owner's name and registered with manufacturer.

**1.7 QUALITY ASSURANCE**

- A. Manufacturer Qualifications: Not less than 5 years of experience in manufacturing components of the types specified.

## GUIDE SPECIFICATIONS FOR DESIGN AND CONSTRUCTION DOCUMENTS

- B. Installer Qualifications: Firm with documented experience in installing components of the types specified.

### 1.8 MOCK-UP

- A. See Division 01 for general requirements for mock-ups.
- B. Provide mock-up 8 feet in length including all components occurring on project. Assemble to illustrate component assembly including glazing materials, sliding door, door frame, door hardware, applied aluminum trim, recessed floor track, recessed ceiling track, attachments to drywall and all aluminum component attachments and anchors.
- C. Locate on-site where directed. Mock-up may not remain as part of the Work.

### 1.9 DELIVERY, STORAGE, AND HANDLING

- A. Comply Deliver aluminum components in manufacturer's standard protective packaging, palletted, crated, or banded together.
- B. Inspect delivered components for damage and replace. Repaired components will not be accepted.
- C. Store components under cover in manufacturer's packaging until installation.

### 1.10 FIELD CONDITIONS

- A. Do not begin installation of interior aluminum components until space has been enclosed and ambient thermal conditions are being maintained at levels consistent with final project requirements.

### 1.11 WARRANTY

- A. See Division 01 for additional warranty requirements.
- B. Correct defective Work within a two year period after Date of Substantial Completion.
- C. Provide five year manufacturer warranty for finish defects including cracking, flaking, blistering, peeling and excess fading, chalking and non-uniformity in color.

## PART 2 – PRODUCTS

### 2.1 MANUFACTURERS

- A. Basis of Design: Wilson Partitions with 2 inch trim.
  - 1. Fixed Wall System: Wilson Partitions, Series As Selected by Architect.
- B. Other Acceptable Manufacturers
  - 1. C.R. Laurence Co., Inc; U.S. Aluminum.
  - 2. Frameworks, Assa Abloy.
  - 3. Substitutions: See Division 01.

### 2.2 FRAMES

- A. Door, Sidelight, and Transom Frames: Extruded aluminum hollow or C-shaped sections; no steel components.
  - 1. Frame Depth: To fit wall thicknesses indicated.
  - 2. Finish: As Selected by Architect.
  - 3. Weatherstripping: Replaceable pile type; at jambs and head.
  - 4. Sidelight/Transom Glazing: Clear, 1/4 inch fully tempered glass.
- B. Dimensions and Shapes: As indicated on drawings by Architect; dimensions shown are nominal.
  - 1. Provide clearances as follows:
    - a. Hinge and Lock Stiles: 0.125 inch.
    - b. Between Meeting Stiles: 0.25 inch.
    - c. At Top Rail and Bottom Rail: 0.125 inch

### 2.3 COMPONENTS

- A. Frames: Extruded aluminum shapes, not less than 0.125 inch thick, reinforced at hardware locations.
  - 1. Corner Brackets: Extruded aluminum, fastened with stainless steel screws.
  - 2. Trim: Extruded aluminum, not less than 0.062 inch thick, removable snap-in type without exposed fasteners.

### 2.4 MATERIALS

- A. Aluminum Sheet: ASTM B209 (ASTM B209M), alloy 5005-H14, stretcher leveled.

## GUIDE SPECIFICATIONS FOR DESIGN AND CONSTRUCTION DOCUMENTS

- B. Extruded Aluminum: ASTM B221 (ASTM B221M), alloy 6063-T5 or alloy 6463-T5.

### 2.5 FINISHES

- A. Superior Performing Organic Coatings: AAMA 2605 multiple coat, thermally cured polyvinylidene fluoride system.
  - 1. Polyvinylidene fluoride (PVDF) multi-coat thermoplastic fluoropolymer coating system, including minimum 70 percent PVDF color topcoat and minimum total dry film thickness of 0.9 mil; color and gloss to match sample.
    - a. Manufacturers:
      - 1) PPG Duranar XL Natural Suede Mica.
      - 2) Substitutions: Not permitted.

### 2.6 ACCESSORIES

- A. Replaceable Weatherstripping: AAMA 701/702 wool pile.
- B. Fasteners: Aluminum, non-magnetic stainless steel, or other material warranted by manufacturer as non-corrosive and compatible with aluminum components.
- C. Brackets and Reinforcements: Manufacturer's high-strength aluminum units where feasible, otherwise, non-magnetic stainless steel or steel hot-dip galvanized in compliance with ASTM A123/A123M.
- D. Door Pulls: Manufacturer's standard cylindrical sliding door pull.

## PART 3 – EXECUTION

### 3.1 EXAMINATION

- A. Verify that wall surfaces and openings are ready to receive frames and are within tolerances specified in manufacturer's instructions.

### 3.2 PREPARATION

- A. Perform cutting, fitting, forming, drilling, and grinding of frames as required for project conditions.
- B. Replace components with damage to exposed finishes.
- C. Separate dissimilar metals to prevent electrolytic action between metals

### 3.3 INSTALLATION

- A. Install frames in accordance with manufacturer's instructions and approved shop drawings.
- B. Install frames in longest lengths possible, with no section less than four feet.
- C. Fasten to ceiling framing at 48 inches on center maximum with fasteners specified by manufacturer.
- D. Set frames plumb, square, level, and aligned to receive doors. Anchor frames to adjacent construction in strict accordance with manufacturer's recommendations and within specified tolerances.
  - 1. Provide concealed installation clips for splice alignment and tight butt joints.
  - 2. Screw clips to main structural components.
  - 3. Exposed fasteners not allowed.
- E. Where aluminum surfaces contact metals other than stainless steel, zinc, or small areas of white bronze, protect from direct contact by using non-absorptive tape or gasket in permanently dry locations.
- F. Hang doors and adjust hardware to achieve specified clearances and proper door operation.
- G. Install door hardware as specified in Section 08 71 00.
- H. Install glazing; set glazing stops and glazing gaskets flush with face of door or frame.
- I. Comply with glazing installation requirements of Section 08 80 00.

### 3.4 CLEANING

- A. Upon completion of installation, thoroughly clean door and frame surfaces in accordance with AAMA 609 & 610.
- B. Do not use abrasive, caustic, or acid cleaning agents.

### 3.5 PROTECTION

- A. Protect products of this section from damage caused by subsequent construction until Date of Substantial Completion.
- B. Replace damaged or defective components that cannot be repaired to a condition indistinguishable from undamaged components.

## PART 4 – APPENDIX

### 4.1 PRODUCT DATA / CUT SHEETS

GUIDE SPECIFICATIONS FOR DESIGN AND CONSTRUCTION DOCUMENTS

- A. Wilson Partitions, Partition Systems various sizes with 2 inch Trims, Product Data
- B. Wilson Partitions, Medium Stile Doors, Product Data

END OF SECTION



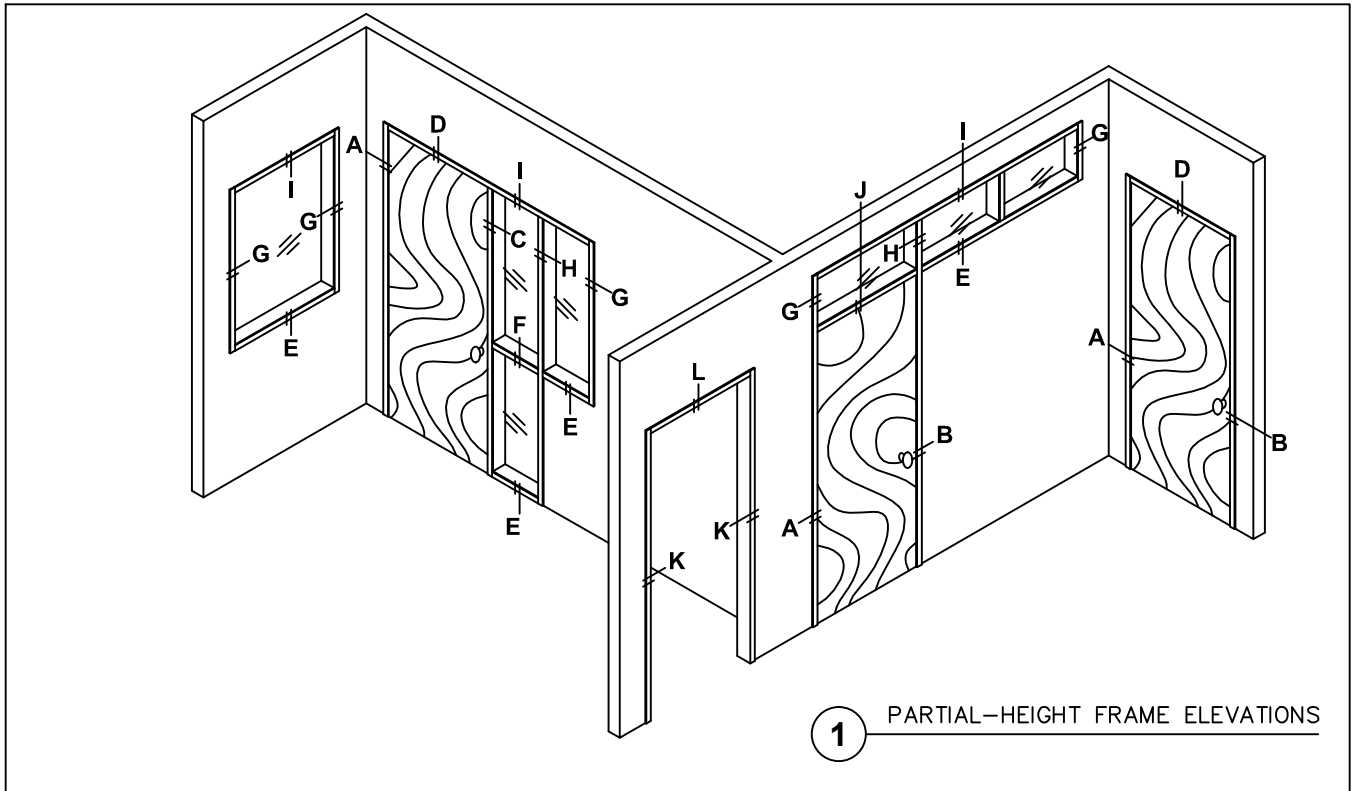
2301 E. Vernon Ave.  
Vernon, CA 90058  
866.443.7258  
323.908.5430  
323.908.5451 Fax

2221 Manana Drive  
Suite 150  
Dallas, TX 75220  
203.316.8033  
203.316.0019 Fax

60 Bonner Street  
Stamford, CT 06902  
203.316.8033  
203.316.0019 Fax

[www.wilsonpart.com](http://www.wilsonpart.com)

## TYPICAL FRAME ELEVATIONS





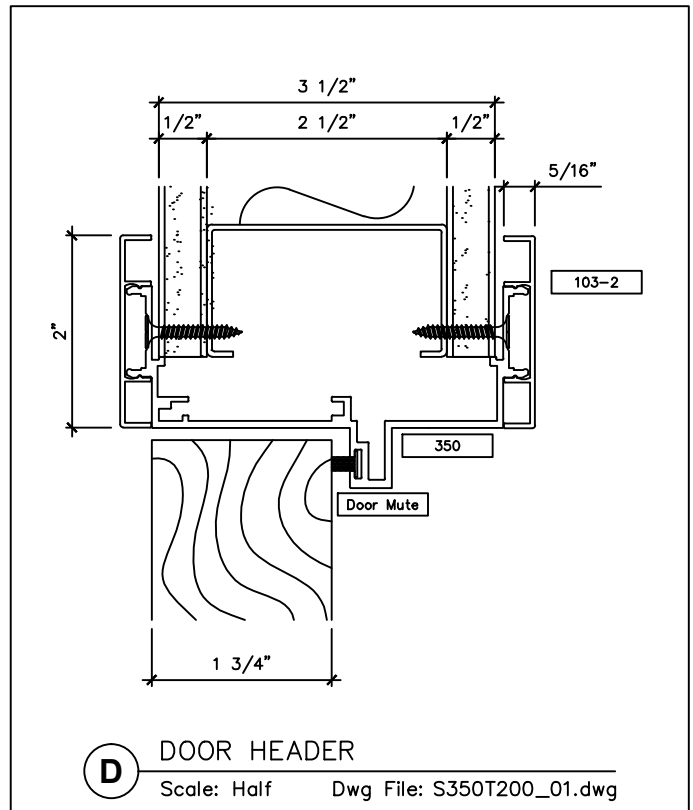
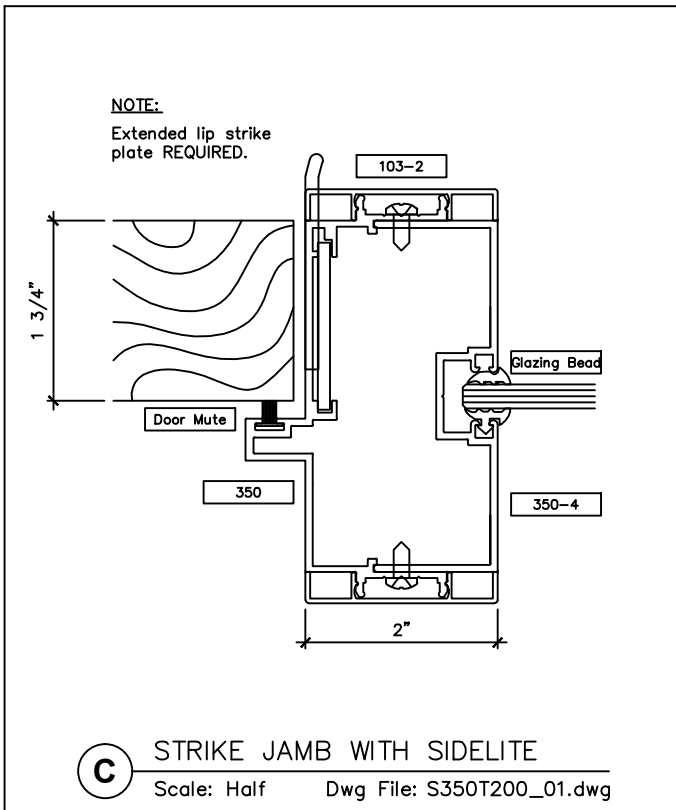
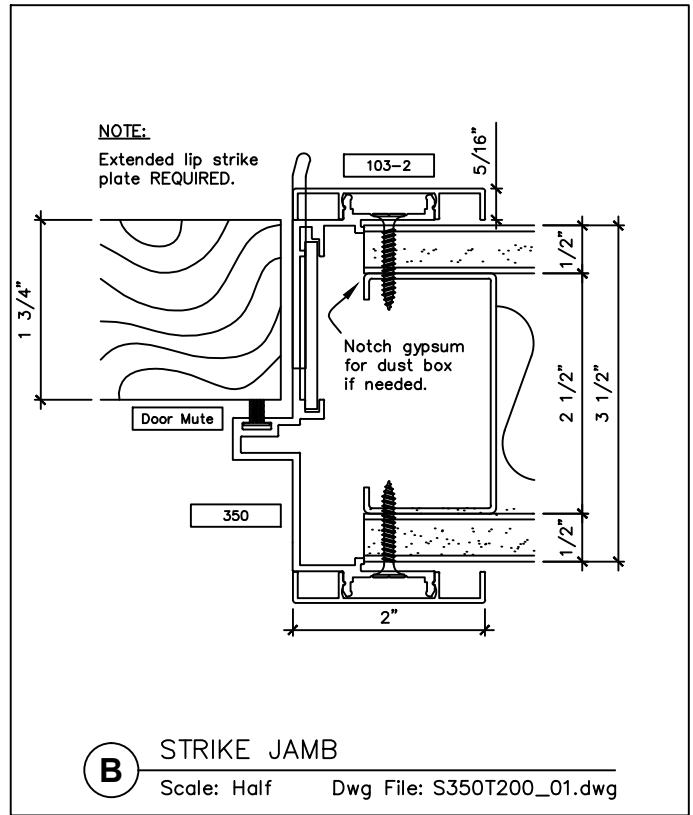
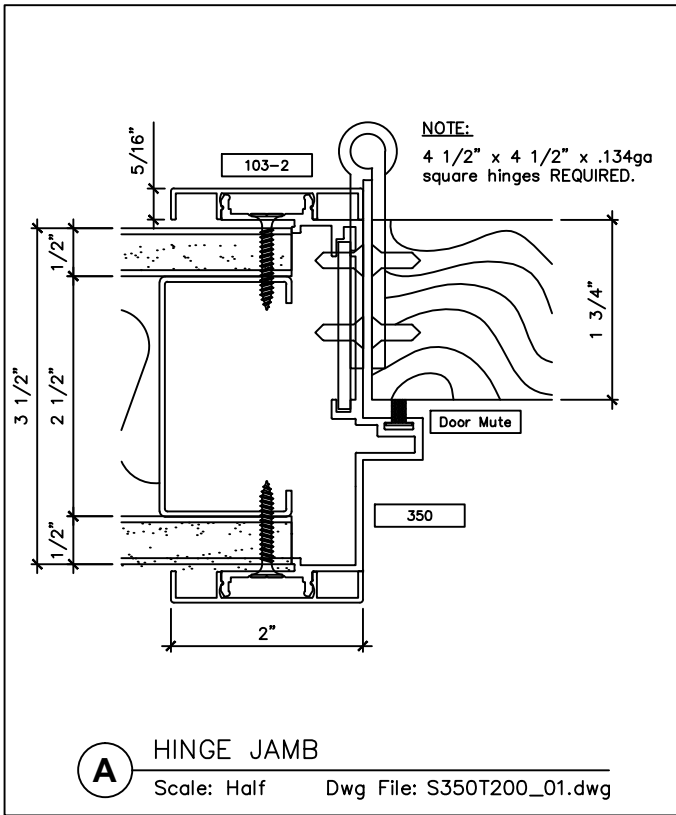
2301 E. Vernon Ave.  
Vernon, CA 90058  
866.443.7258  
323.908.5430  
323.908.5451 Fax

2221 Manana Drive  
Suite 150  
Dallas, TX 75220  
203.316.8033  
203.316.0019 Fax

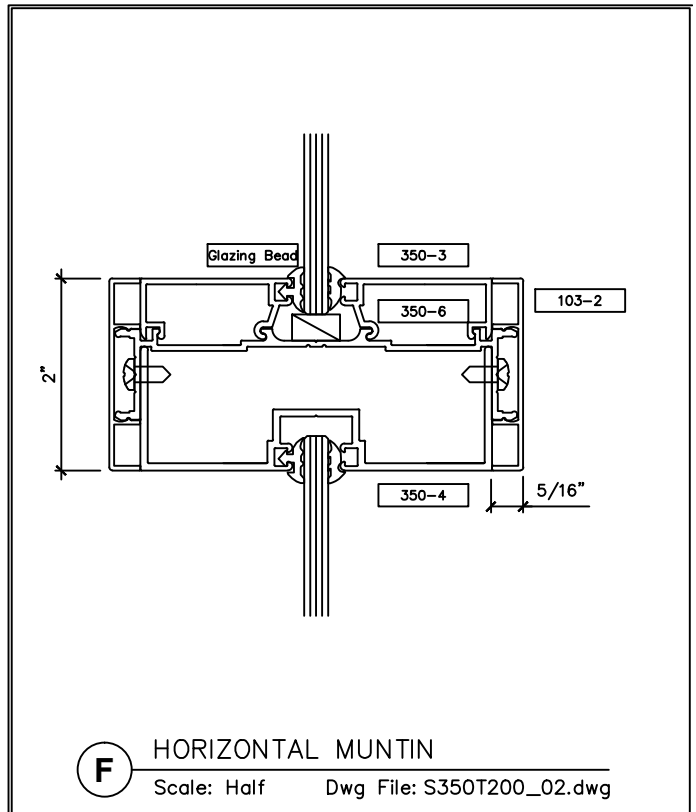
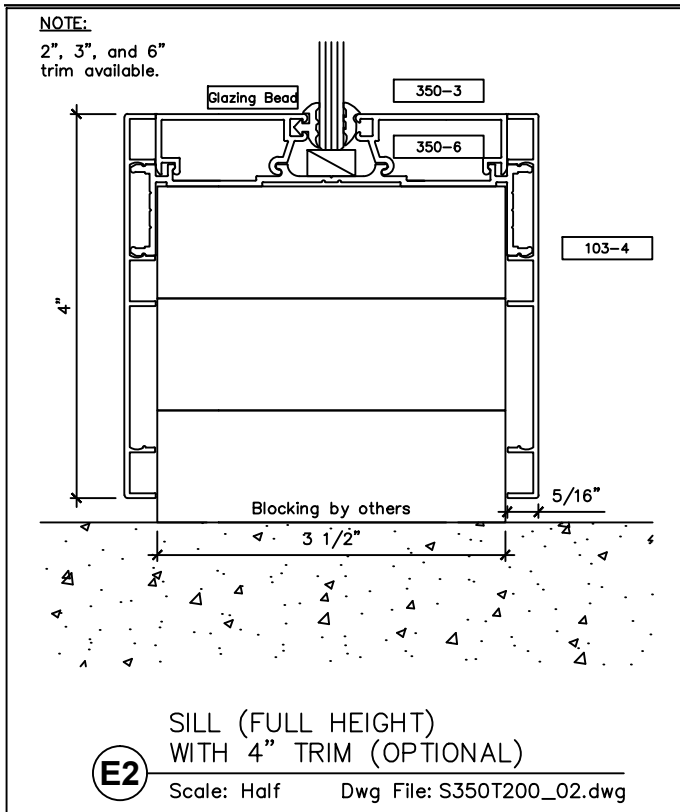
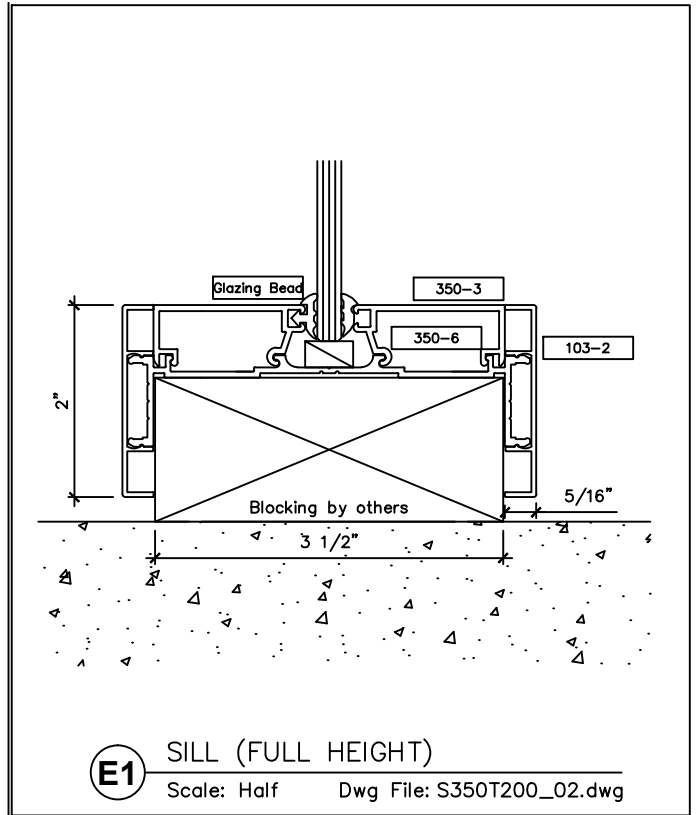
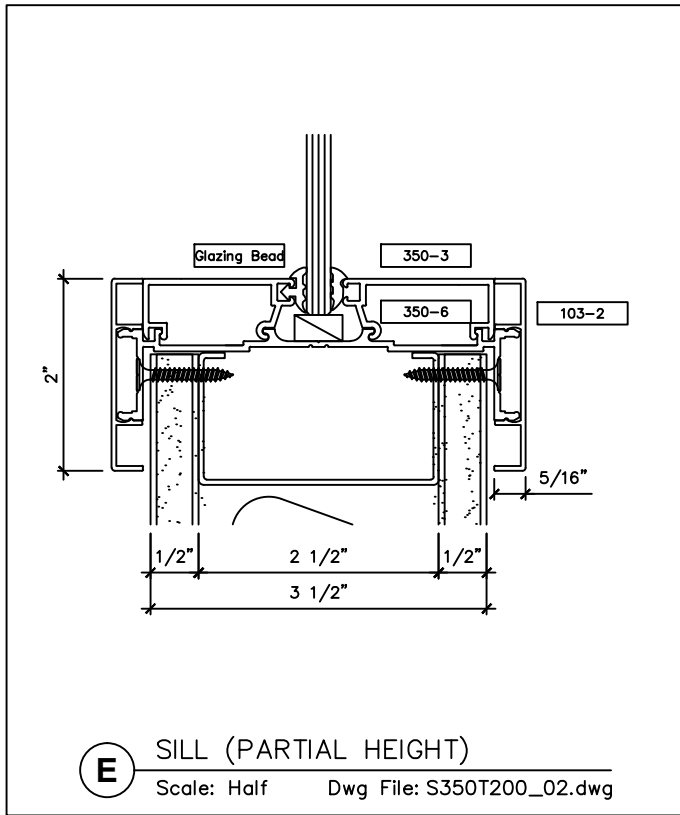
60 Bonner Street  
Stamford, CT 06902  
203.316.8033  
203.316.0019 Fax

www.wilsonpart.com

## SNAP ON TRIM- SERIES 350 WITH 2" TRIM FOR A 3 1/2" PARTITION



## SNAP ON TRIM- SERIES 350 WITH 2" TRIM FOR A 3 1/2" PARTITION





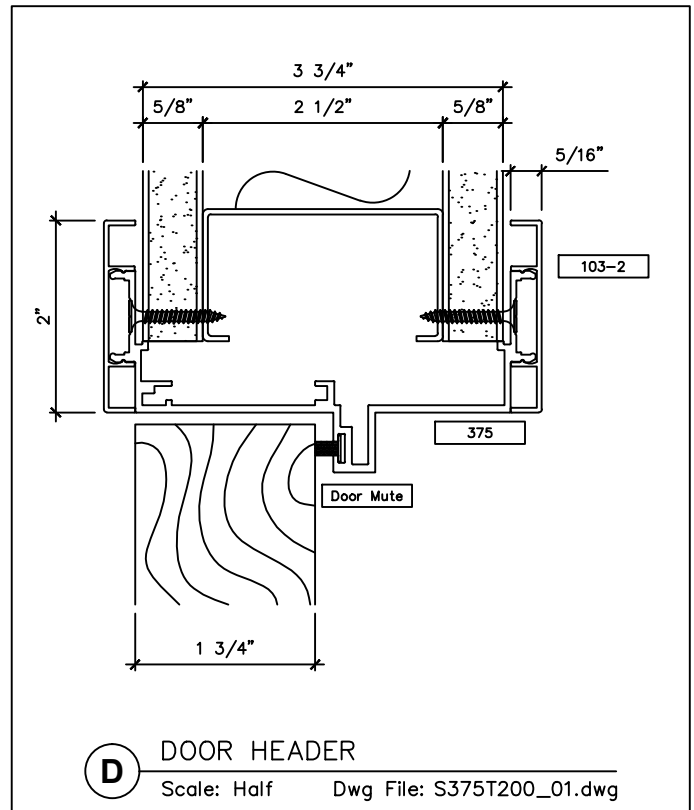
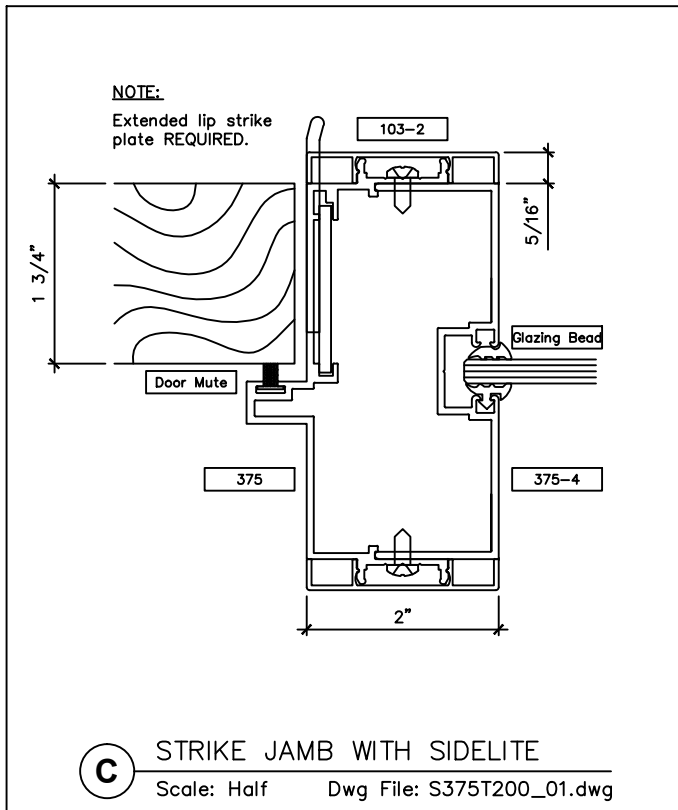
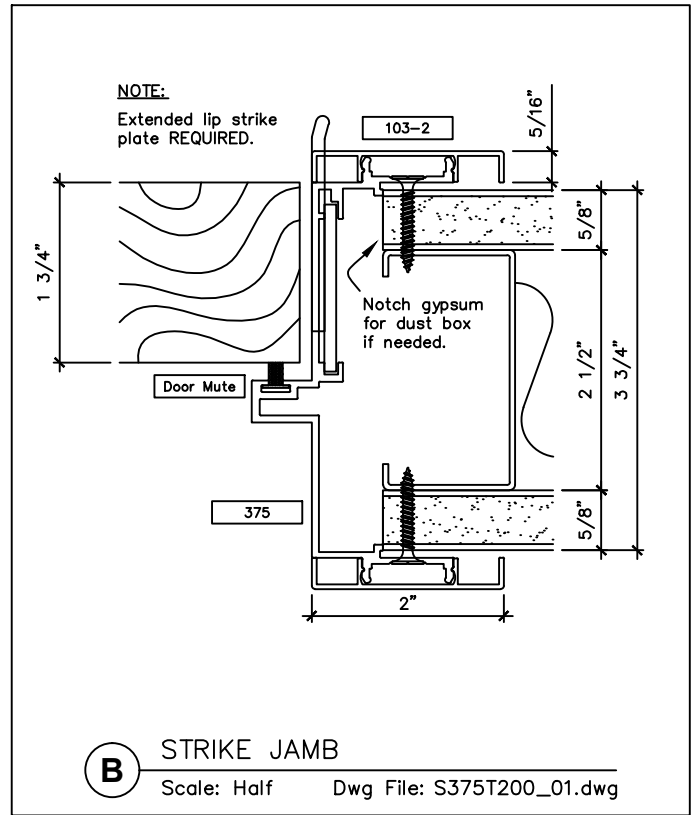
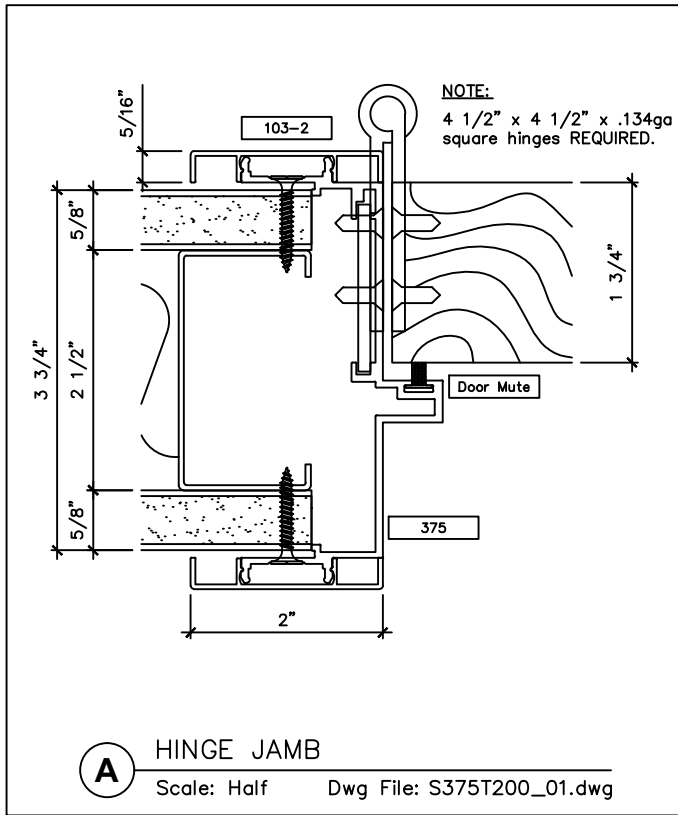
2301 E. Vernon Ave.  
Vernon, CA 90058  
866.443.7258  
323.908.5430  
323.908.5451 Fax

2221 Manana Drive  
Suite 150  
Dallas, TX 75220  
203.316.8033  
203.316.0019 Fax

60 Bonner Street  
Stamford, CT 06902  
203.316.8033  
203.316.0019 Fax

www.wilsonpart.com

## SNAP ON TRIM- SERIES 375 WITH 2" TRIM FOR A 3 3/4" PARTITION







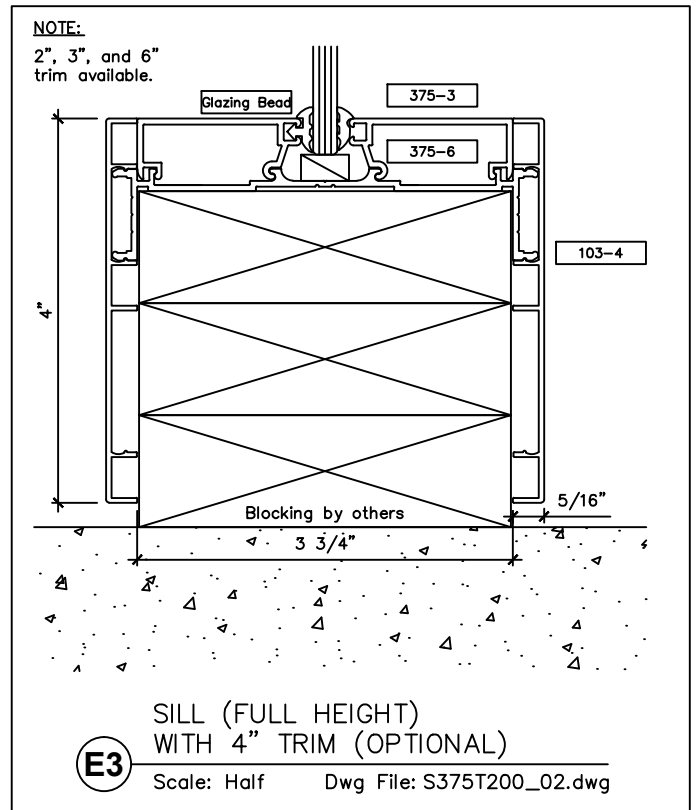
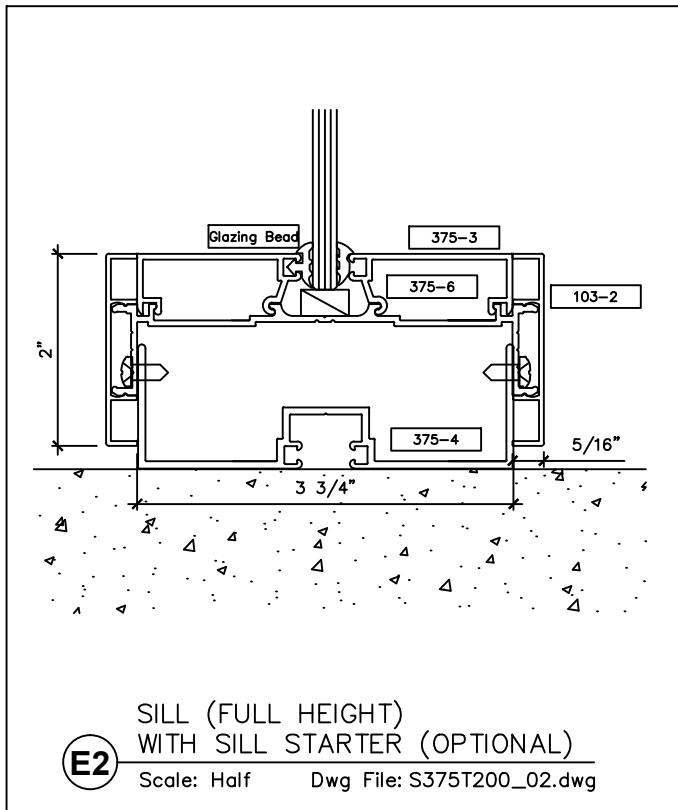
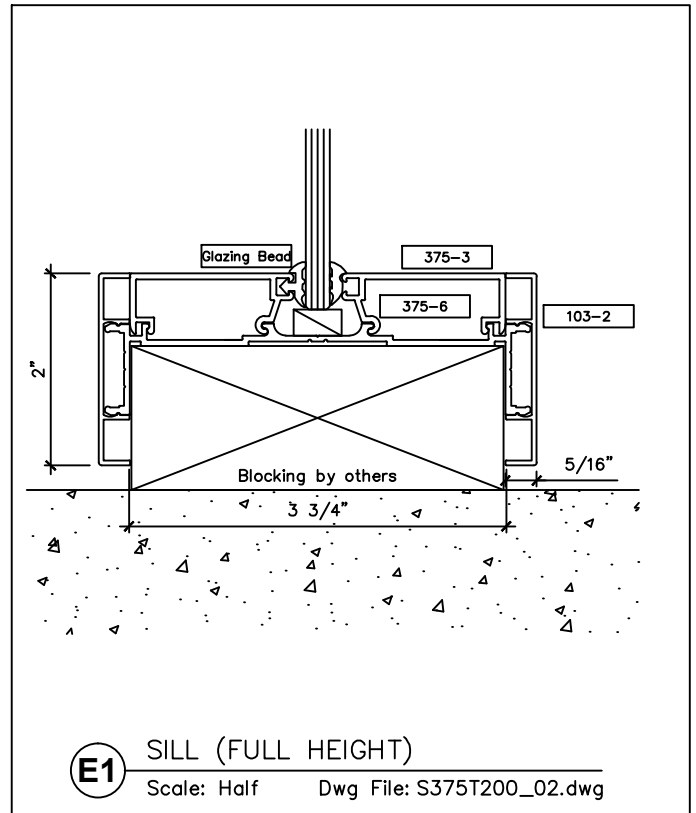
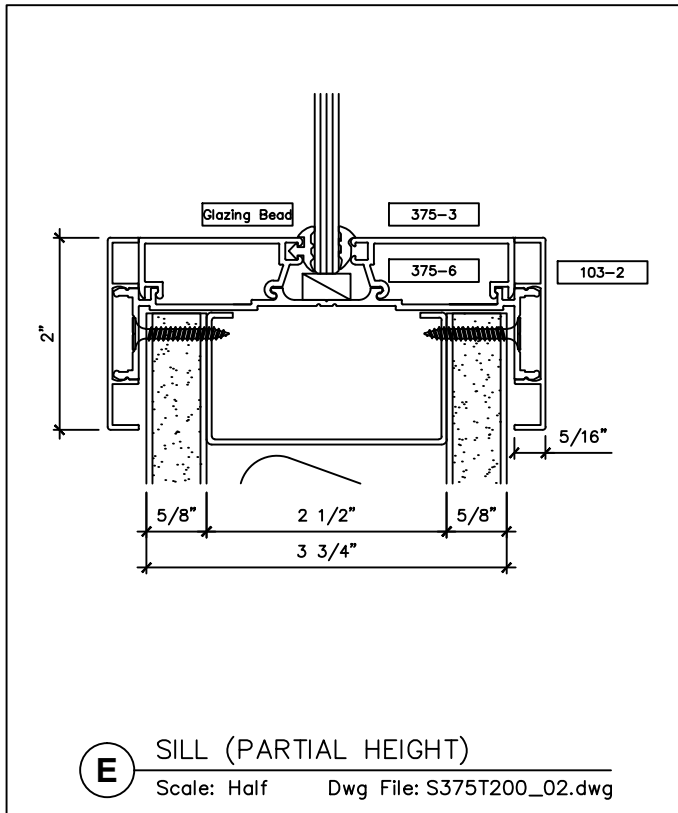
2301 E. Vernon Ave.  
Vernon, CA 90058  
866.443.7258  
323.908.5430  
323.908.5451 Fax

2221 Manana Drive  
Suite 150  
Dallas, TX 75220  
203.316.8033  
203.316.0019 Fax

60 Bonner Street  
Stamford, CT 06902  
203.316.8033  
203.316.0019 Fax

www.wilsonpart.com

## SNAP ON TRIM- SERIES 375 WITH 2" TRIM FOR A 3 3/4" PARTITION





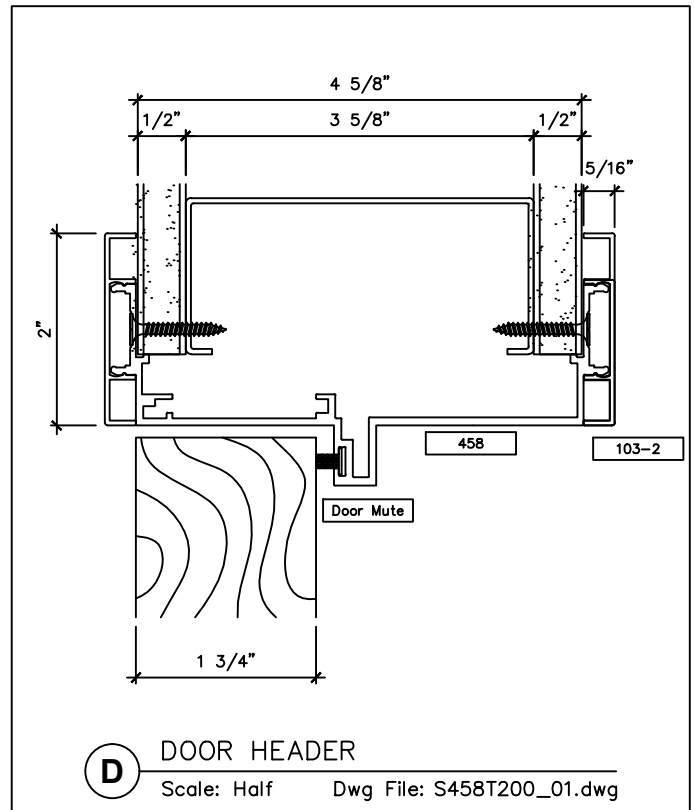
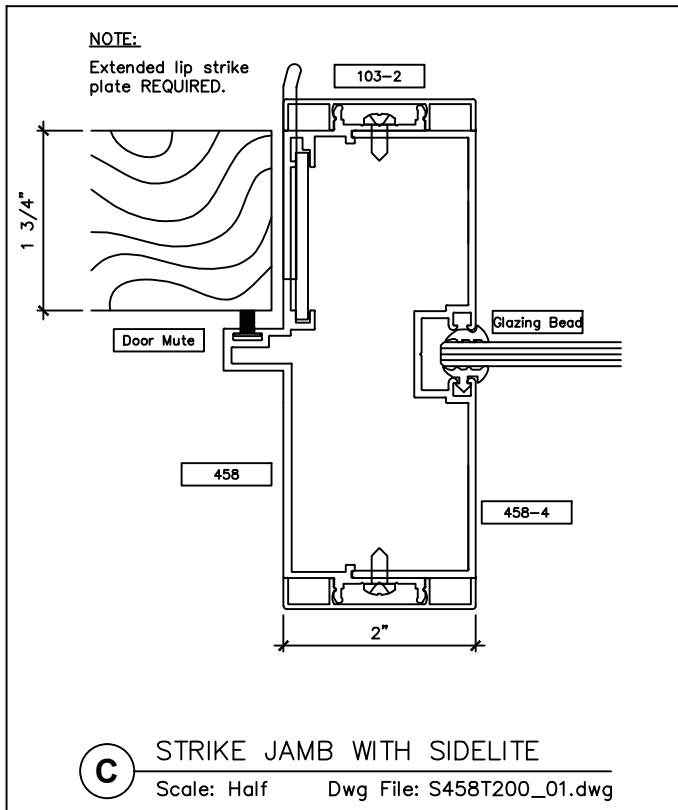
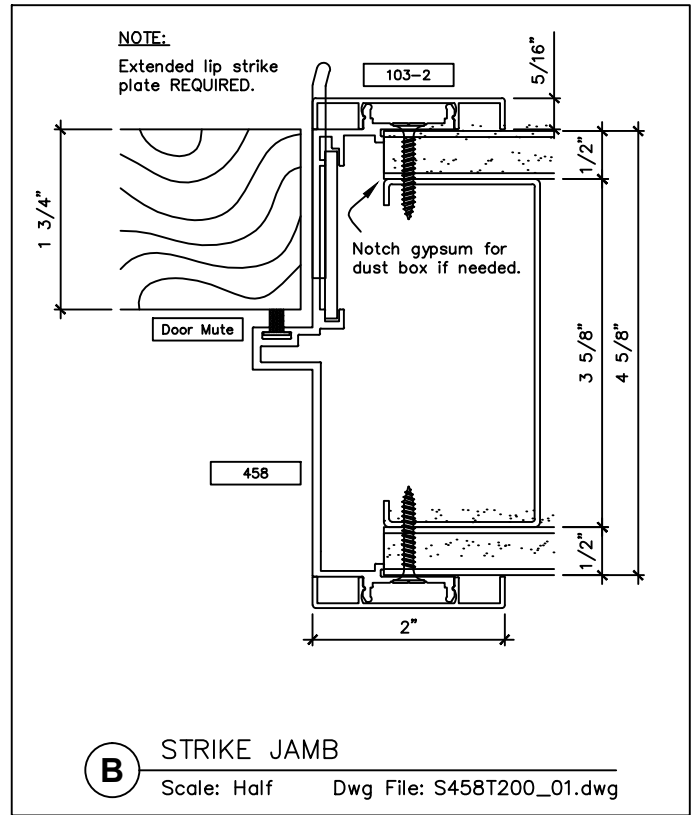
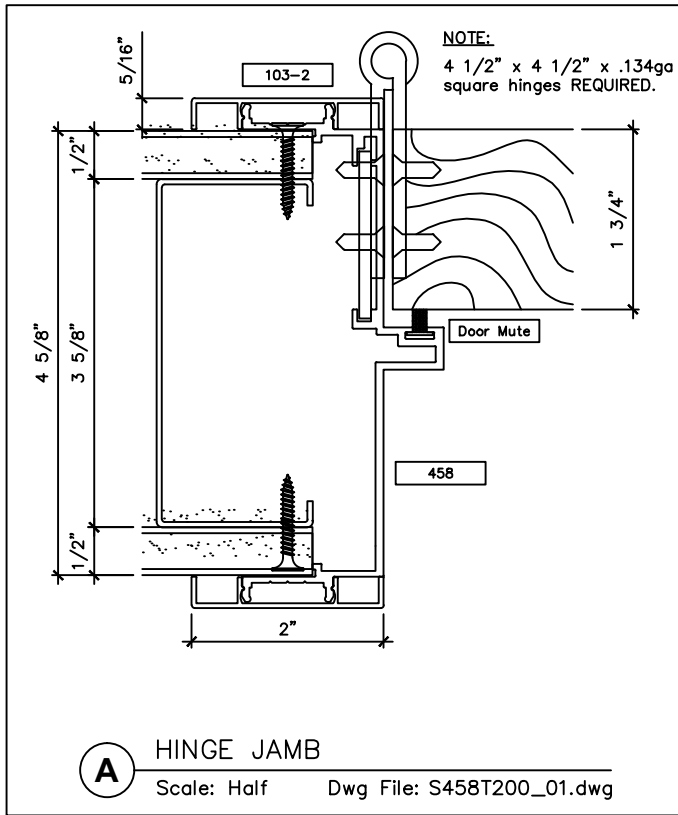
2301 E. Vernon Ave.  
Vernon, CA 90058  
866.443.7258  
323.908.5430  
323.908.5451 Fax

2221 Manana Drive  
Suite 150  
Dallas, TX 75220  
203.316.8033  
203.316.0019 Fax

60 Bonner Street  
Stamford, CT 06902  
203.316.8033  
203.316.0019 Fax

www.wilsonpart.com

## SNAP ON TRIM- SERIES 458 WITH 2" TRIM FOR A 4 5/8" PARTITION





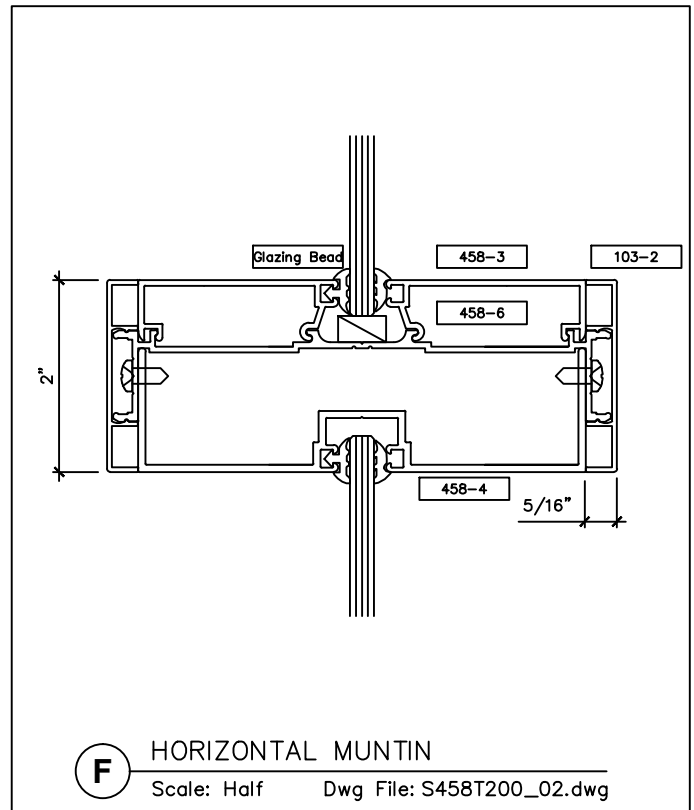
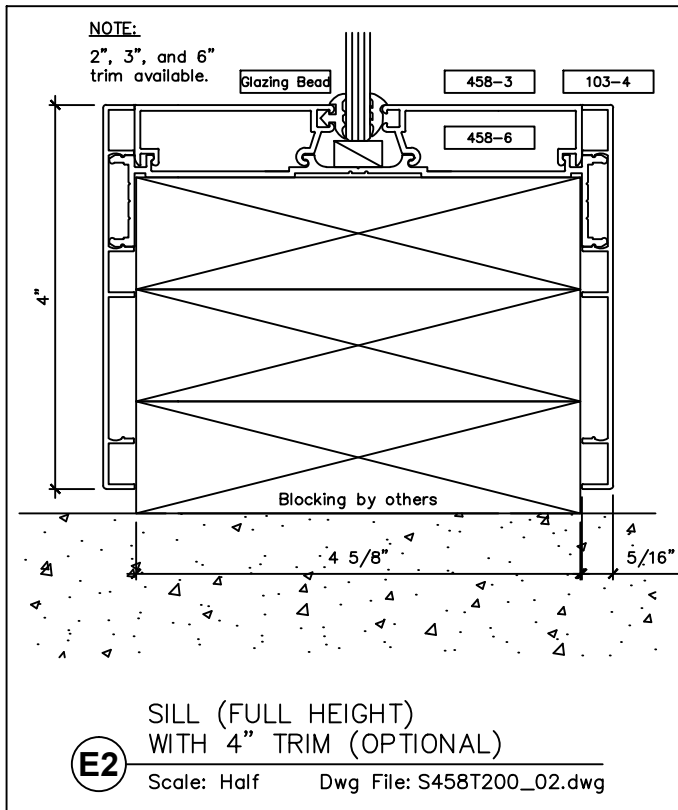
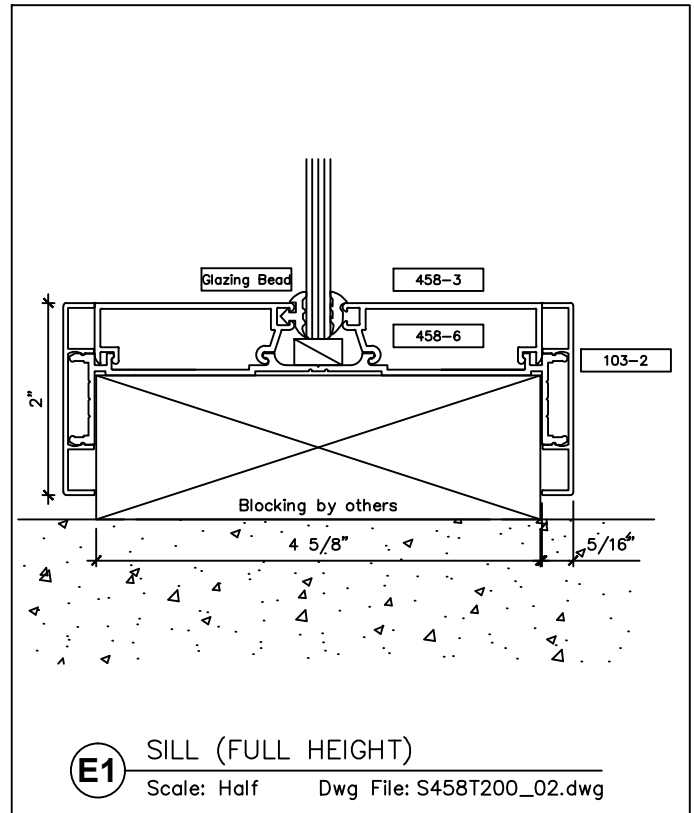
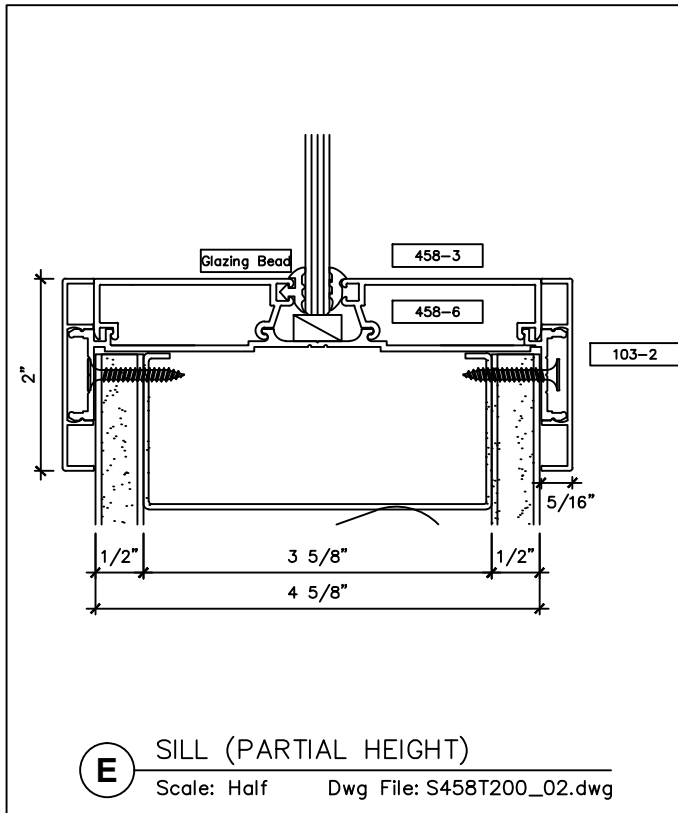
2301 E. Vernon Ave.  
Vernon, CA 90058  
866.443.7258  
323.908.5430  
323.908.5451 Fax

2221 Manana Drive  
Suite 150  
Dallas, TX 75220  
203.316.8033  
203.316.0019 Fax

60 Bonner Street  
Stamford, CT 06902  
203.316.8033  
203.316.0019 Fax

www.wilsonpart.com

## SNAP ON TRIM- SERIES 458 WITH 2" TRIM FOR A 4 5/8" PARTITION





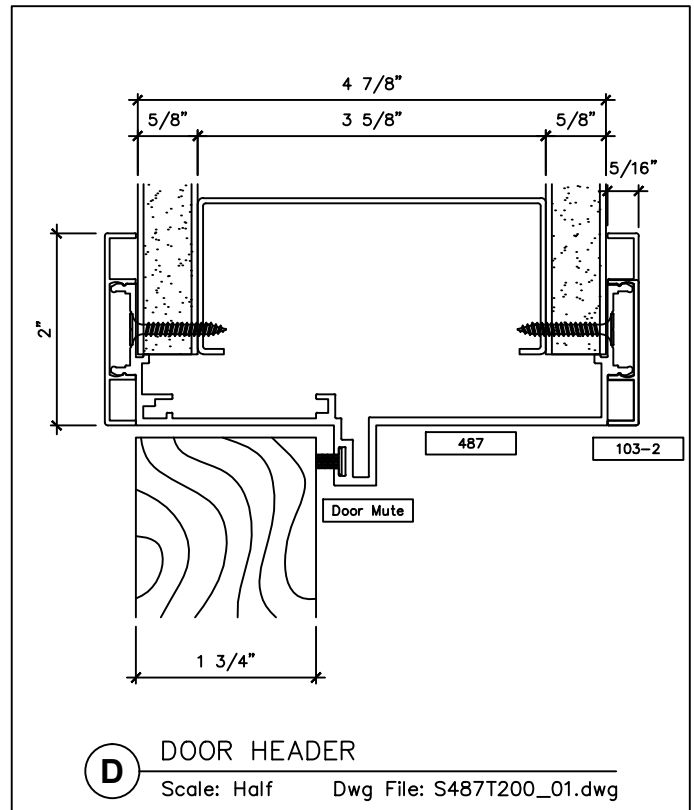
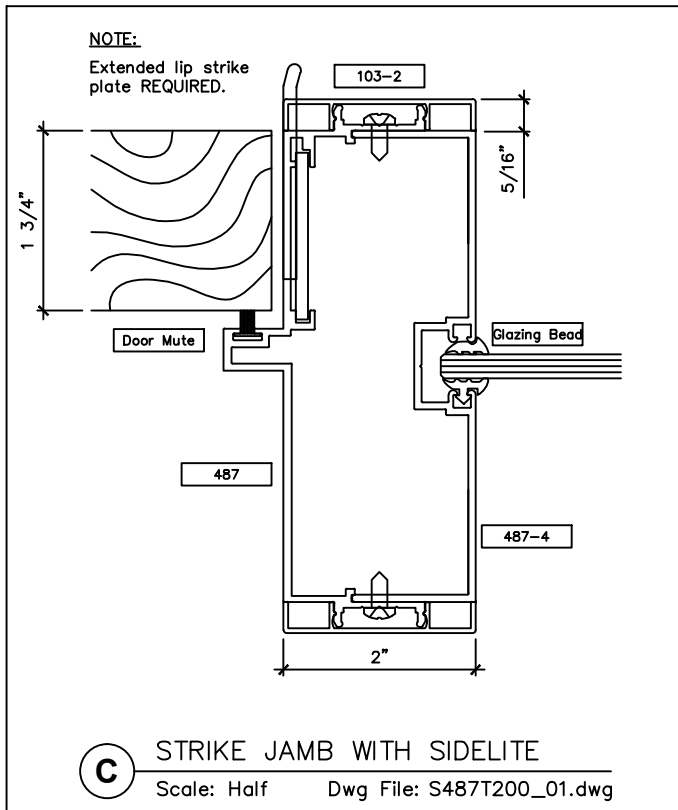
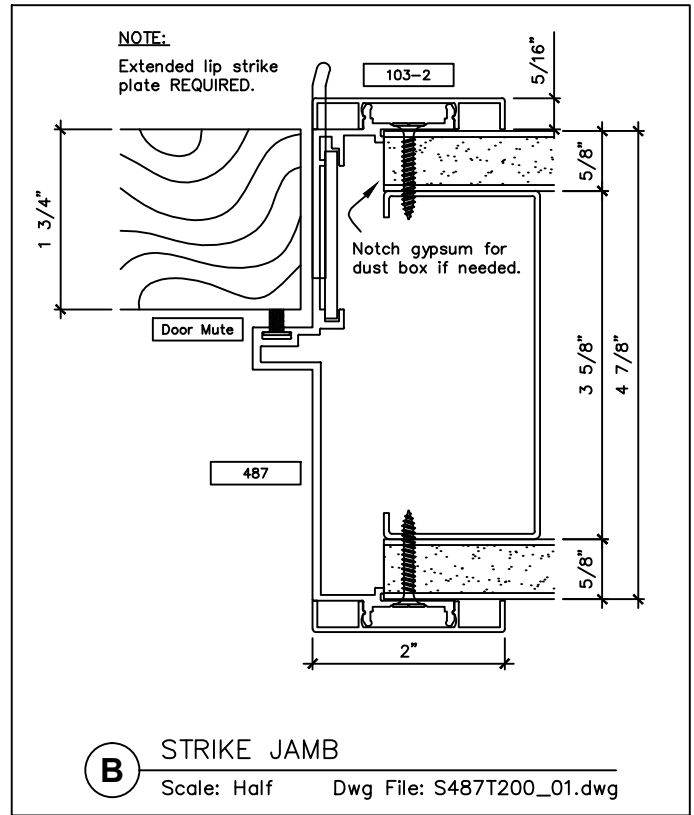
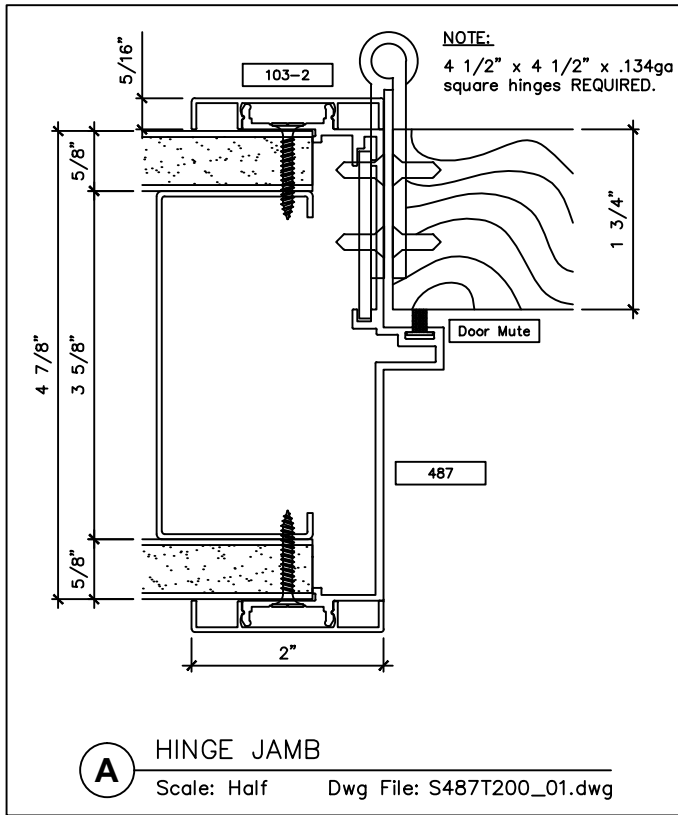
2301 E. Vernon Ave.  
Vernon, CA 90058  
866.443.7258  
323.908.5430  
323.908.5451 Fax

2221 Manana Drive  
Suite 150  
Dallas, TX 75220  
203.316.8033  
203.316.0019 Fax

60 Bonner Street  
Stamford, CT 06902  
203.316.8033  
203.316.0019 Fax

www.wilsonpart.com

## SNAP ON TRIM- SERIES 487 WITH 2" TRIM FOR A 4 7/8" PARTITION





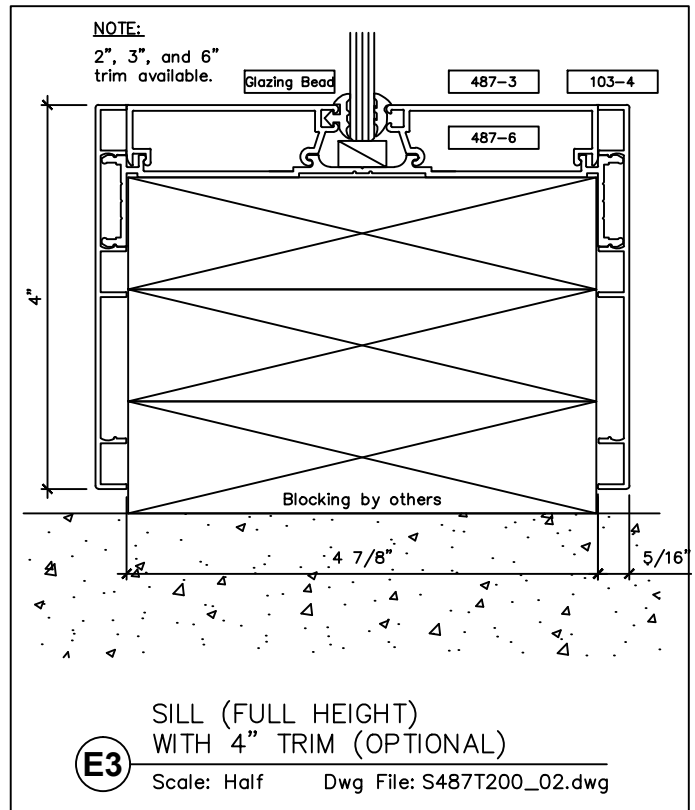
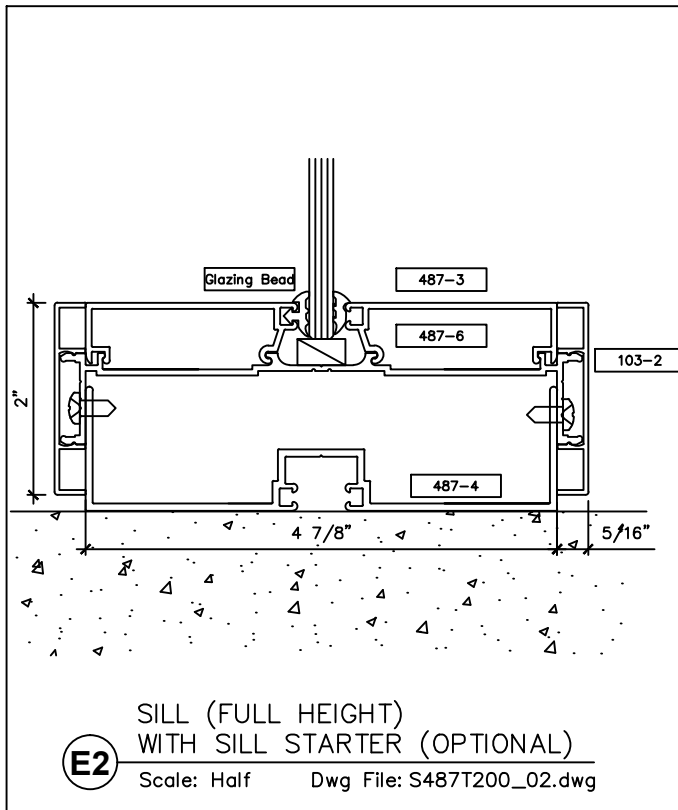
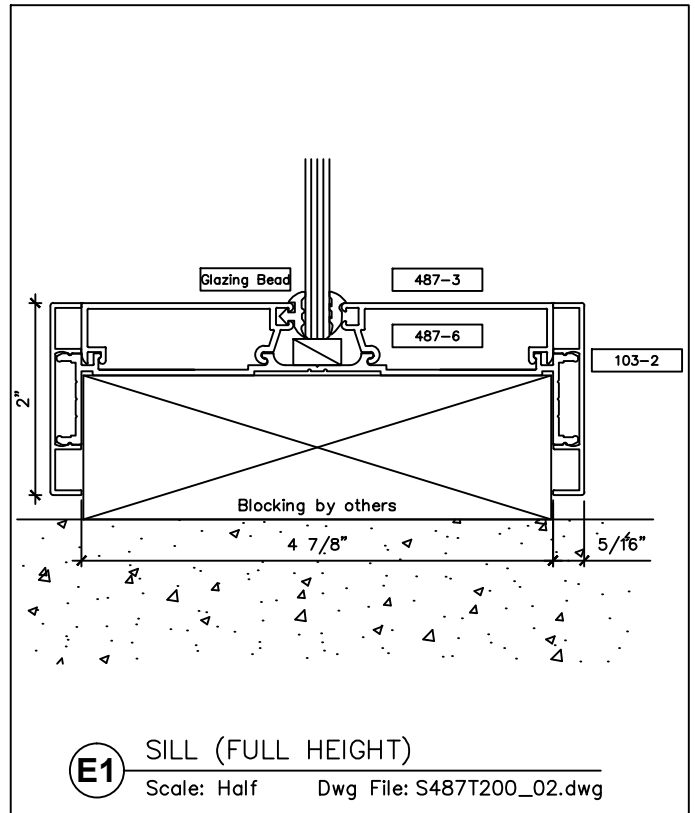
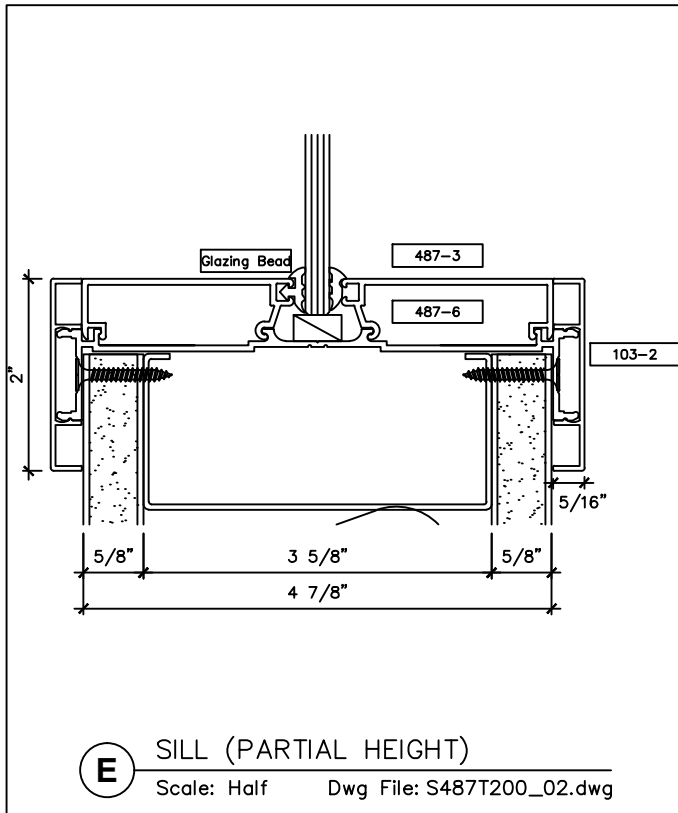
2301 E. Vernon Ave.  
Vernon, CA 90058  
866.443.7258  
323.908.5430  
323.908.5451 Fax

2221 Manana Drive  
Suite 150  
Dallas, TX 75220  
203.316.8033  
203.316.0019 Fax

60 Bonner Street  
Stamford, CT 06902  
203.316.8033  
203.316.0019 Fax

www.wilsonpart.com

## SNAP ON TRIM- SERIES 487 WITH 2" TRIM FOR A 4 7/8" PARTITION





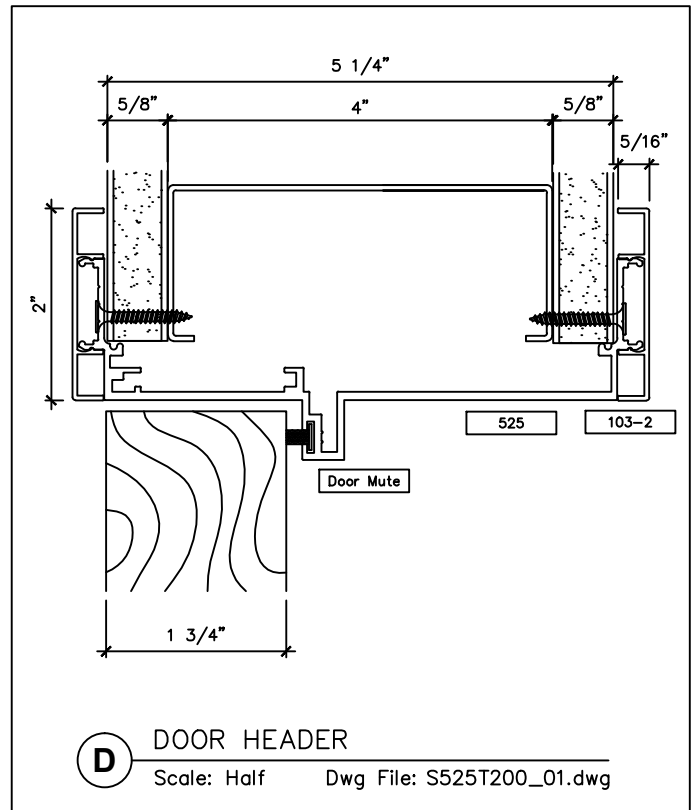
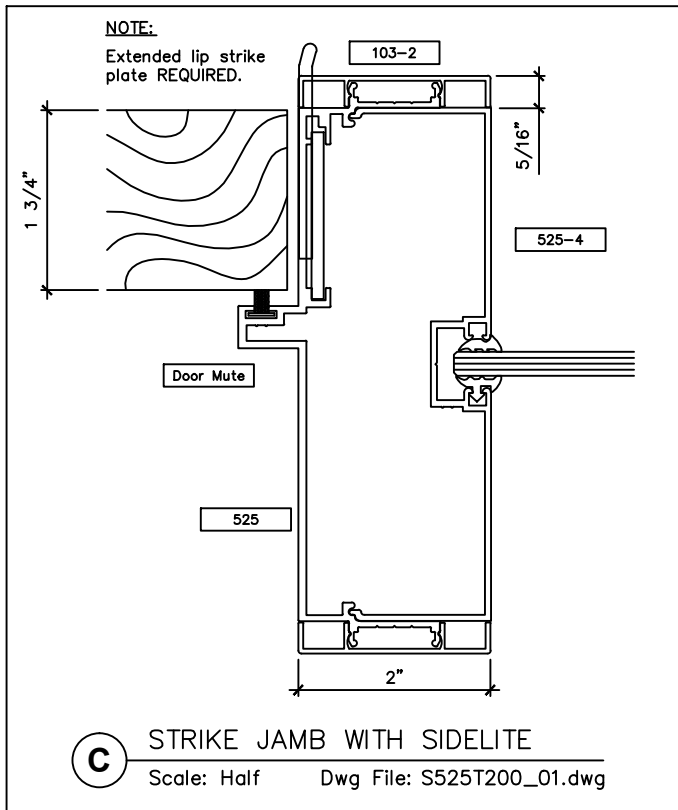
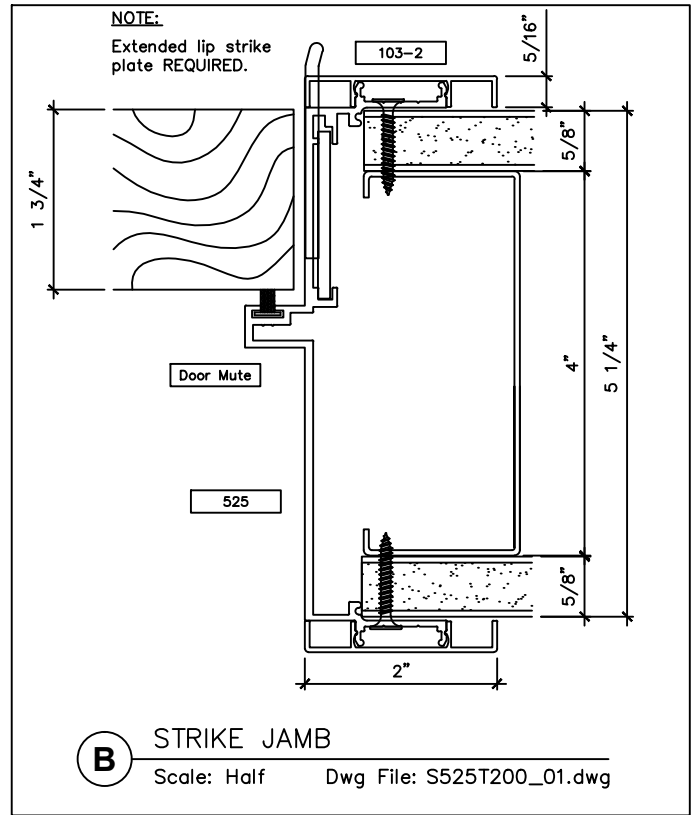
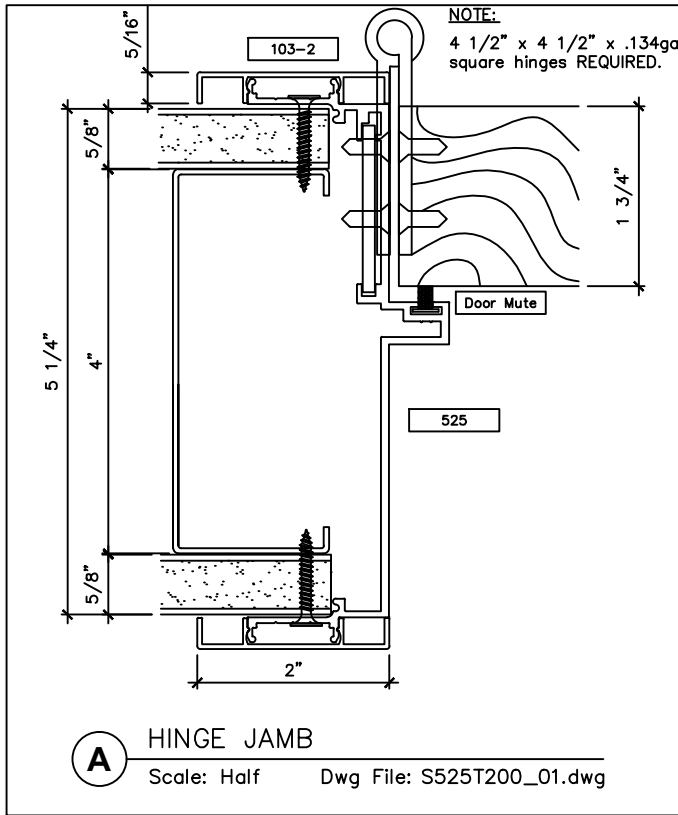
2301 E. Vernon Ave.  
Vernon, CA 90058  
866.443.7258  
323.908.5430  
323.908.5451 Fax

2221 Manana Drive  
Suite 150  
Dallas, TX 75220  
203.316.8033  
203.316.0019 Fax

60 Bonner Street  
Stamford, CT 06902  
203.316.8033  
203.316.0019 Fax

www.wilsonpart.com

## SNAP ON TRIM- SERIES 525 WITH 2" TRIM FOR A 5 1/4" PARTITION





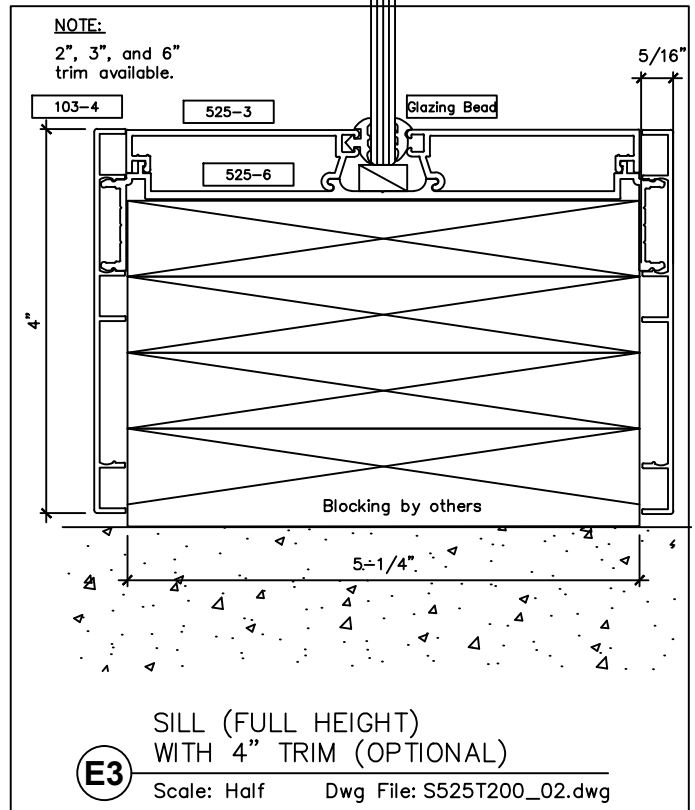
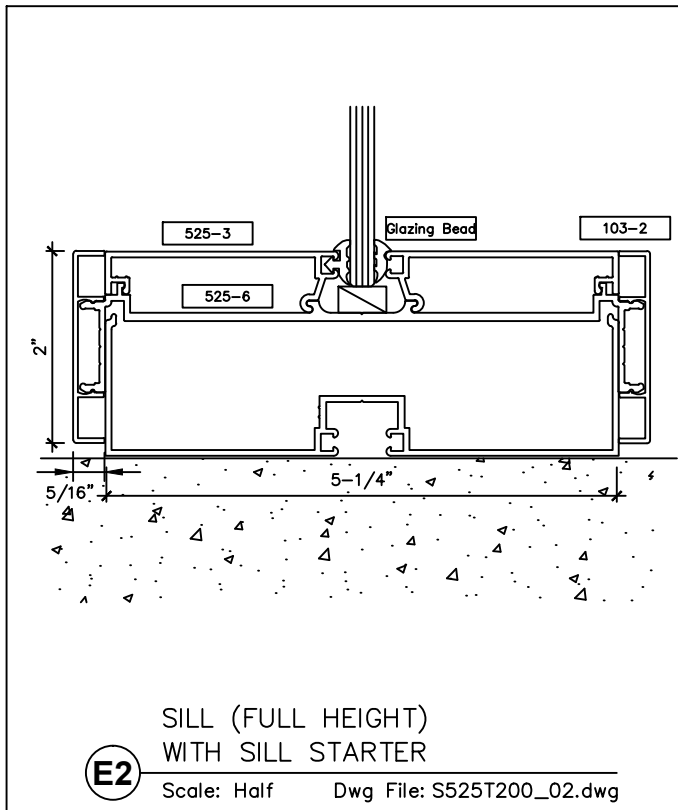
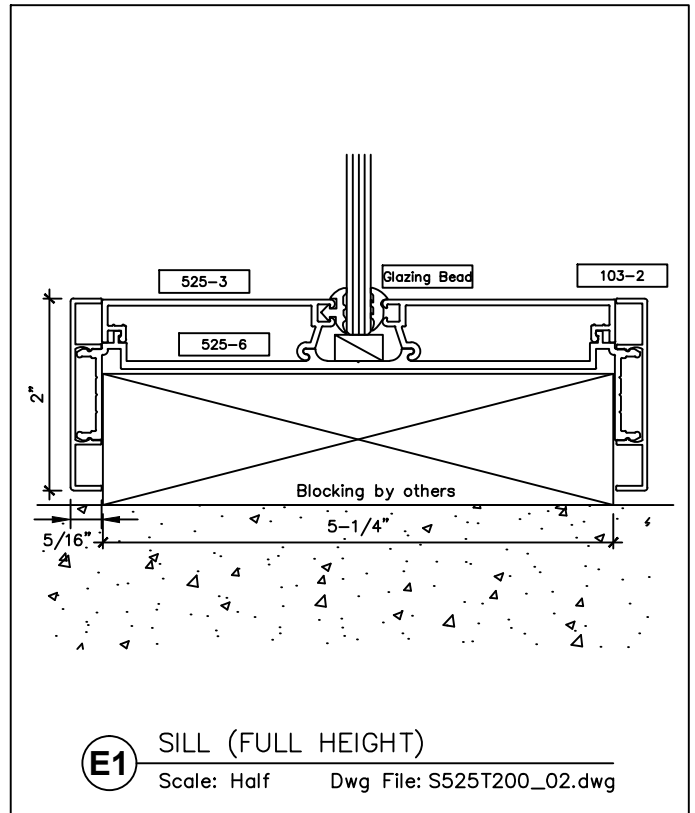
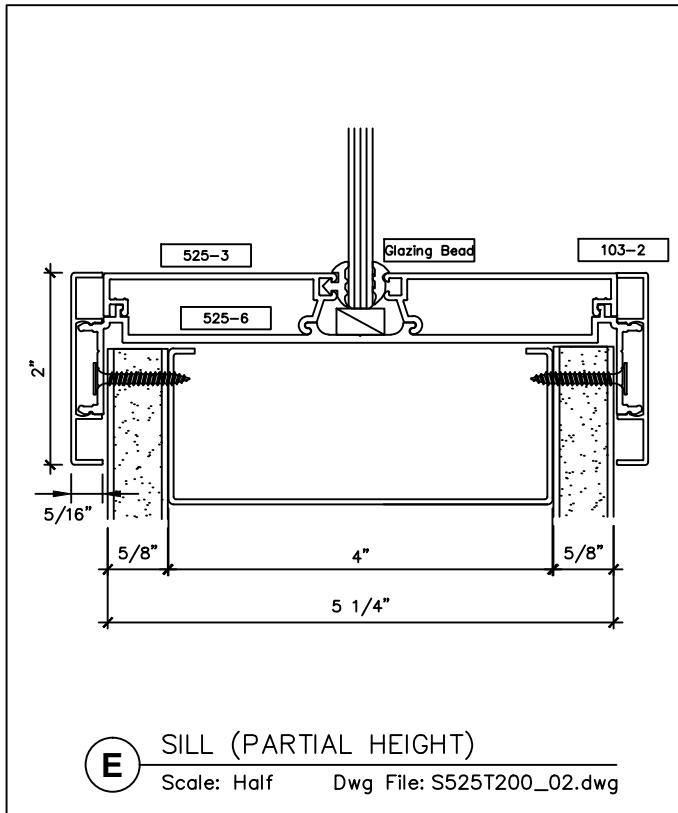
2301 E. Vernon Ave.  
Vernon, CA 90058  
866.443.7258  
323.908.5430  
323.908.5451 Fax

2221 Manana Drive  
Suite 150  
Dallas, TX 75220  
203.316.8033  
203.316.0019 Fax

60 Bonner Street  
Stamford, CT 06902  
203.316.8033  
203.316.0019 Fax

www.wilsonpart.com

## SNAP ON TRIM- SERIES 525 WITH 2" TRIM FOR A 5 1/4" PARTITION



**NOTE:**  
2", 3", and 6"  
trim available.



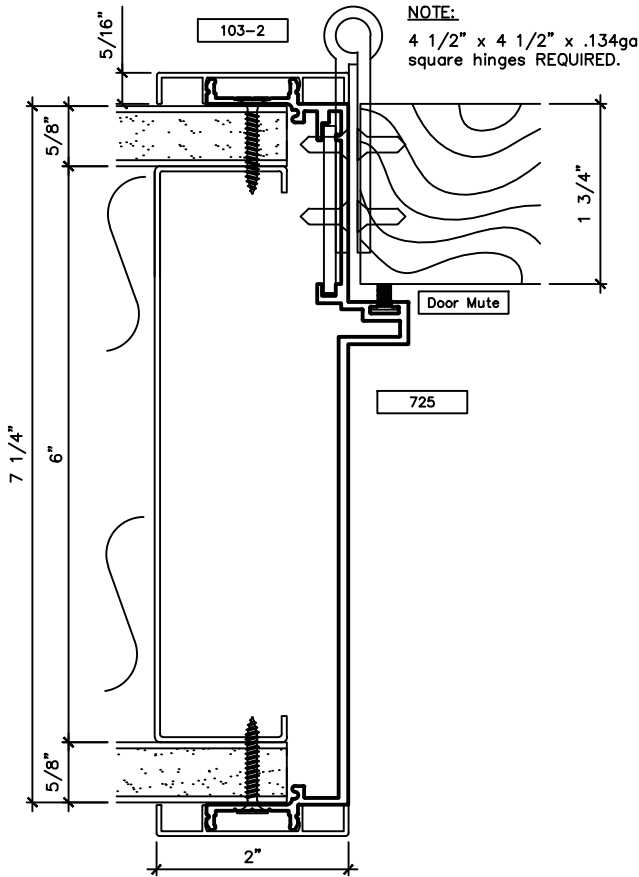
2301 E. Vernon Ave.  
Vernon, CA 90058  
866.443.7258  
323.908.5430  
323.908.5451 Fax

2221 Manana Drive  
Suite 150  
Dallas, TX 75220  
203.316.8033  
203.316.0019 Fax

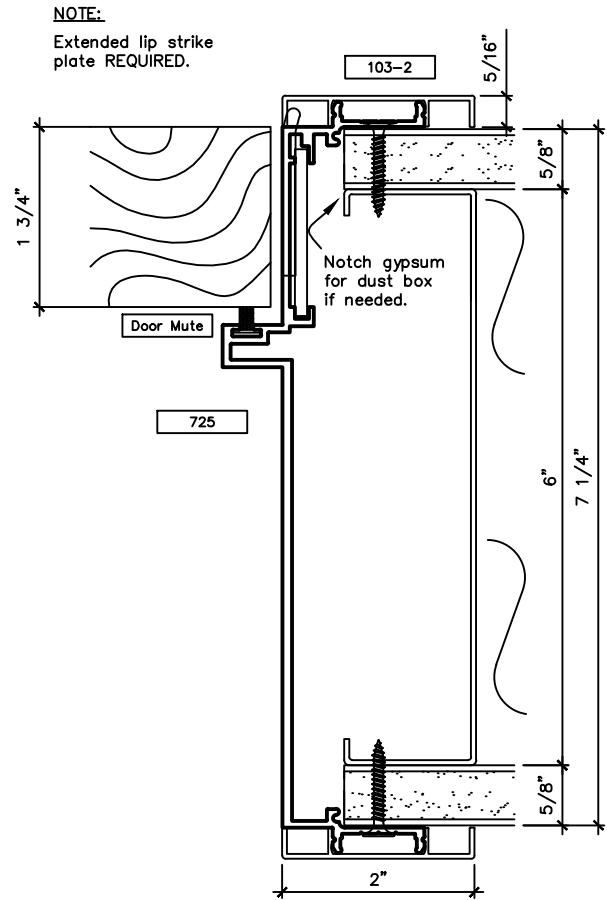
60 Bonner Street  
Stamford, CT 06902  
203.316.8033  
203.316.0019 Fax

www.wilsonpart.com

## SNAP ON TRIM- SERIES 725 WITH 2" TRIM FOR A 7 1/4" PARTITION



**A** HINGE JAMB  
Scale: Half Dwg File: S725T200\_01.dwg



**B** STRIKE JAMB  
Scale: Half Dwg File: S725T200\_01.dwg





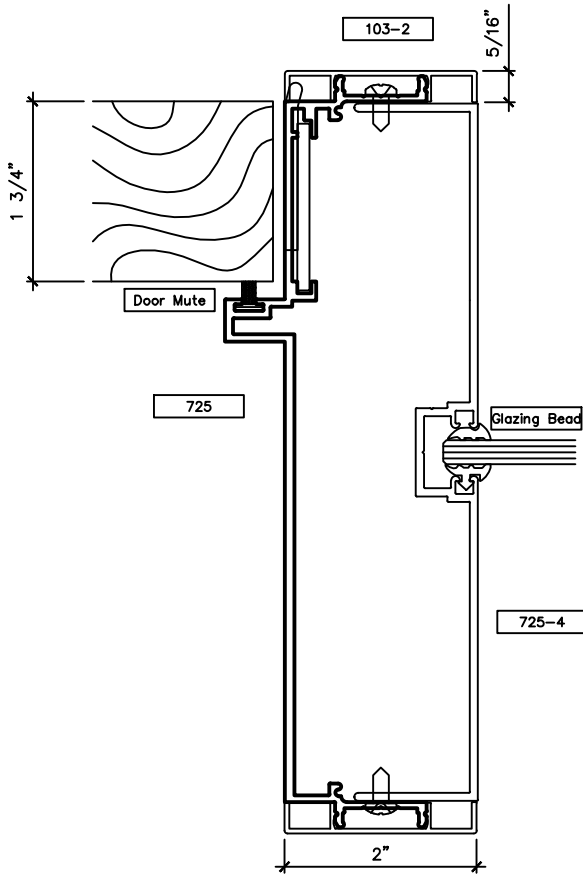
2301 E. Vernon Ave.  
Vernon, CA 90058  
866.443.7258  
323.908.5430  
323.908.5451 Fax

2221 Manana Drive  
Suite 150  
Dallas, TX 75220  
203.316.8033  
203.316.0019 Fax

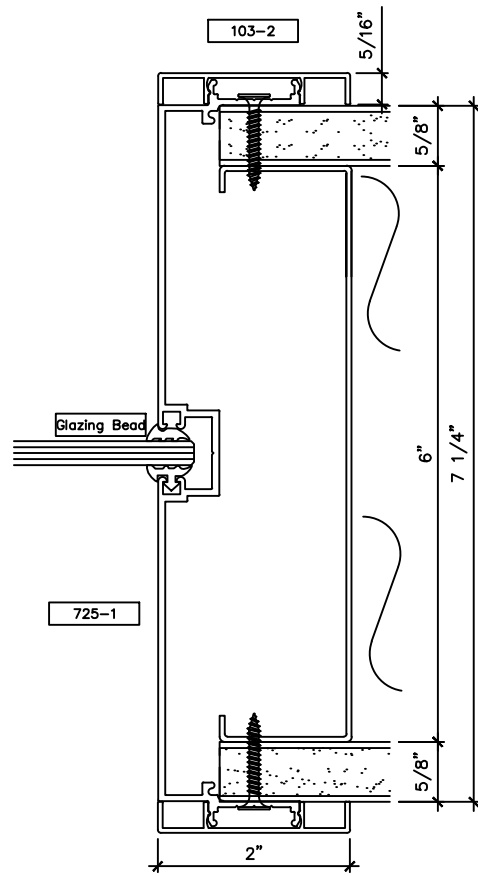
60 Bonner Street  
Stamford, CT 06902  
203.316.8033  
203.316.0019 Fax

www.wilsonpart.com

## SNAP ON TRIM- SERIES 725 WITH 2" TRIM FOR A 7 1/4" PARTITION



**C** STRIKE JAMB WITH SIDELITE  
Scale: Half    Dwg File: S725T200\_02.dwg



**D** JAMB MULLION  
Scale: Half    Dwg File: S725T200\_02.dwg



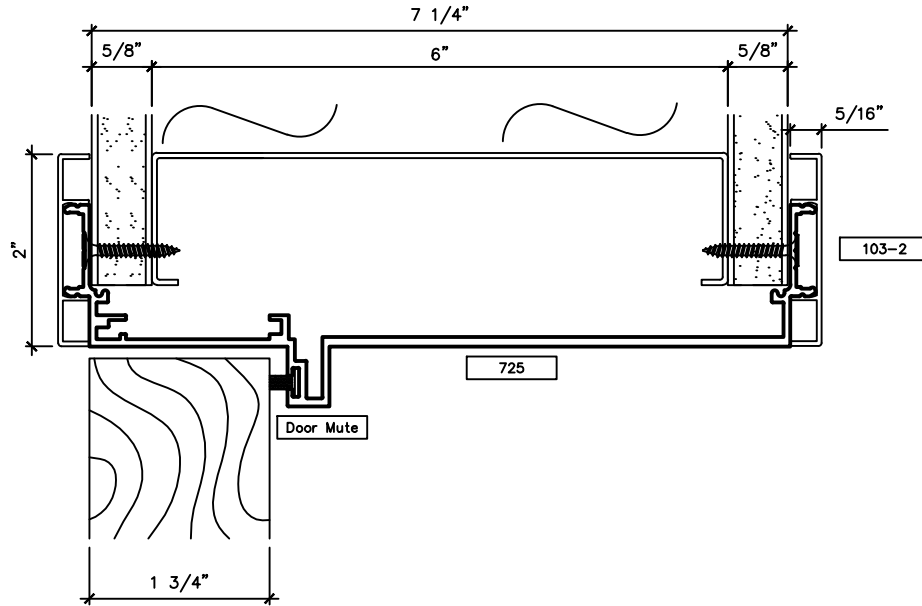
2301 E. Vernon Ave.  
Vernon, CA 90058  
866.443.7258  
323.908.5430  
323.908.5451 Fax

2221 Manana Drive  
Suite 150  
Dallas, TX 75220  
203.316.8033  
203.316.0019 Fax

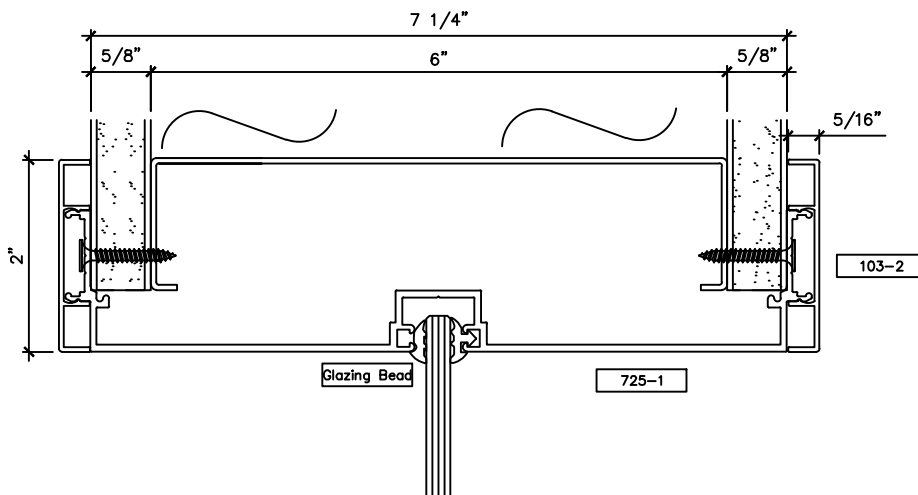
60 Bonner Street  
Stamford, CT 06902  
203.316.8033  
203.316.0019 Fax

www.wilsonpart.com

## SNAP ON TRIM- SERIES 725 WITH 2" TRIM FOR A 7 1/4" PARTITION



**E** DOOR HEADER  
Scale: Half Dwg File: S725T200\_03.dwg



**F** GLAZING HEADER  
Scale: Half Dwg File: S725T200\_03.dwg



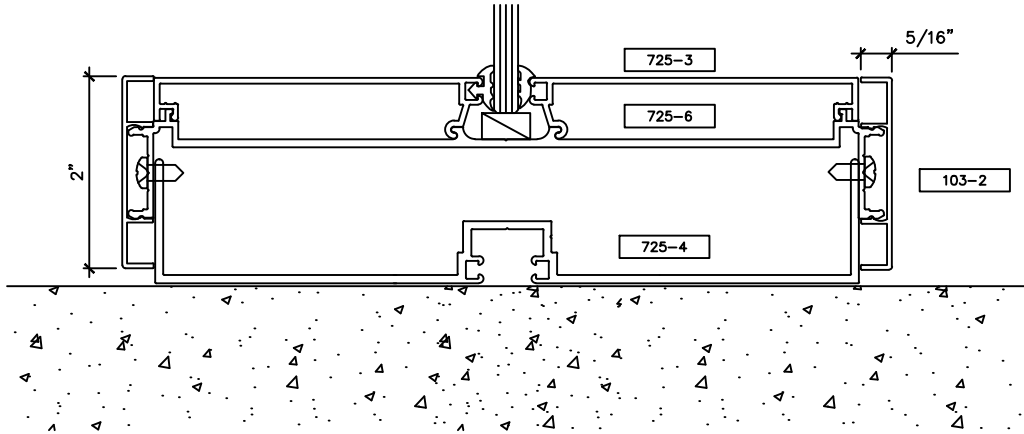
2301 E. Vernon Ave.  
Vernon, CA 90058  
866.443.7258  
323.908.5430  
323.908.5451 Fax

2221 Manana Drive  
Suite 150  
Dallas, TX 75220  
203.316.8033  
203.316.0019 Fax

60 Bonner Street  
Stamford, CT 06902  
203.316.8033  
203.316.0019 Fax

www.wilsonpart.com

## SNAP ON TRIM- SERIES 725 WITH 2" TRIM FOR A 7 1/4" PARTITION

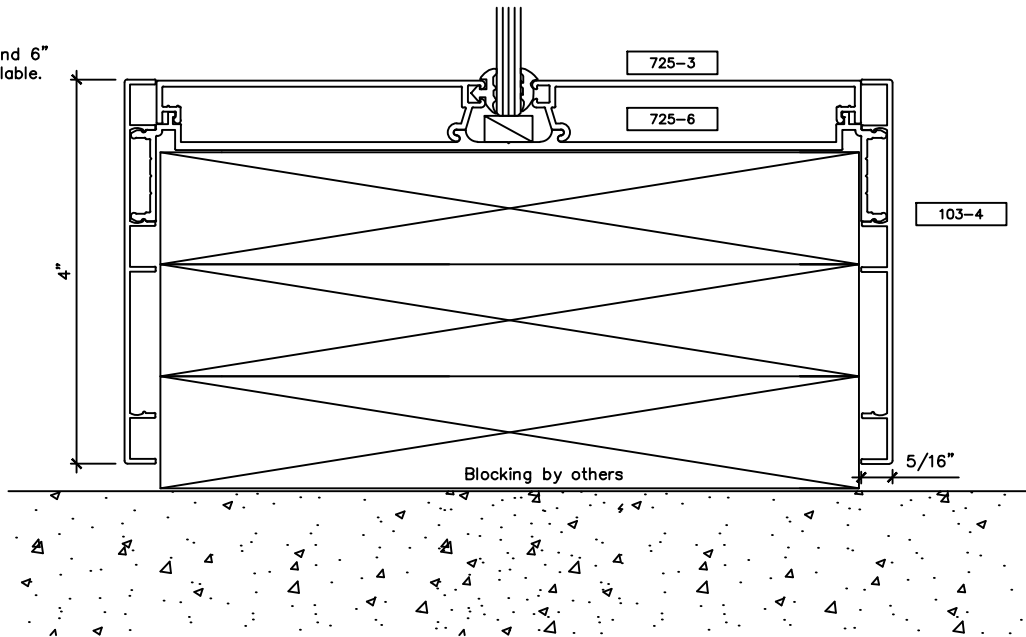


### SILL (FULL HEIGHT WITH SILL STARTER)

Scale: Half      Dwg File: S725T200\_05.dwg

**NOTE:**

2", 3", and 6"  
trim available.



### SILL (FULL HEIGHT) WITH 4" TRIM (OPTIONAL)

Scale: Half      Dwg File: S725T200\_05.dwg



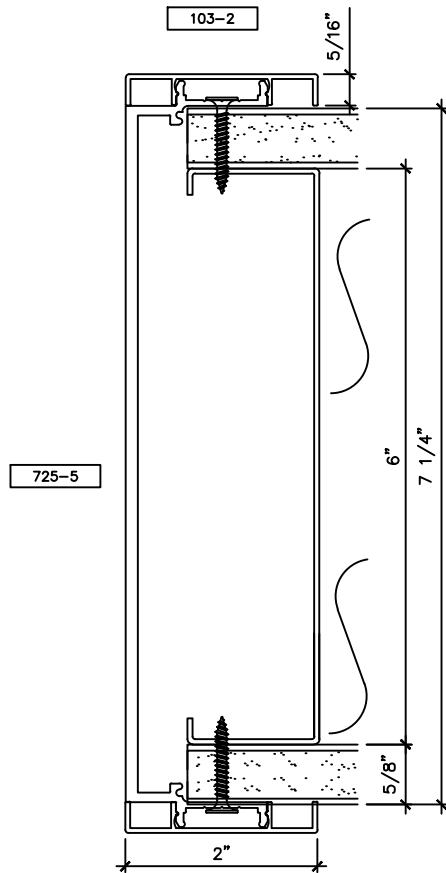
2301 E. Vernon Ave.  
Vernon, CA 90058  
866.443.7258  
323.908.5430  
323.908.5451 Fax

2221 Manana Drive  
Suite 150  
Dallas, TX 75220  
203.316.8033  
203.316.0019 Fax

60 Bonner Street  
Stamford, CT 06902  
203.316.8033  
203.316.0019 Fax

www.wilsonpart.com

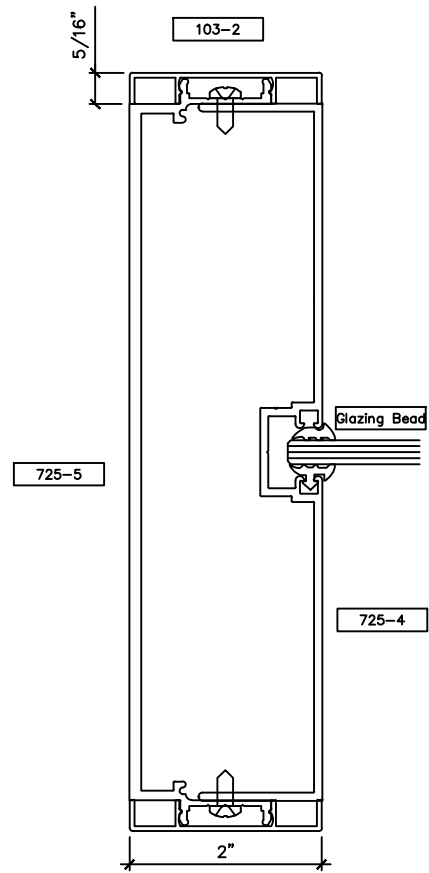
## SNAP ON TRIM- SERIES 725 WITH 2" TRIM FOR A 7 1/4" PARTITION



**L**

CASED OPENING HEADER

Scale: Half Dwg File: S725T200\_08.dwg



**M**

CASED OPENING JAMB  
WITH SIDELITE

Scale: Half Dwg File: S725T200\_08.dwg

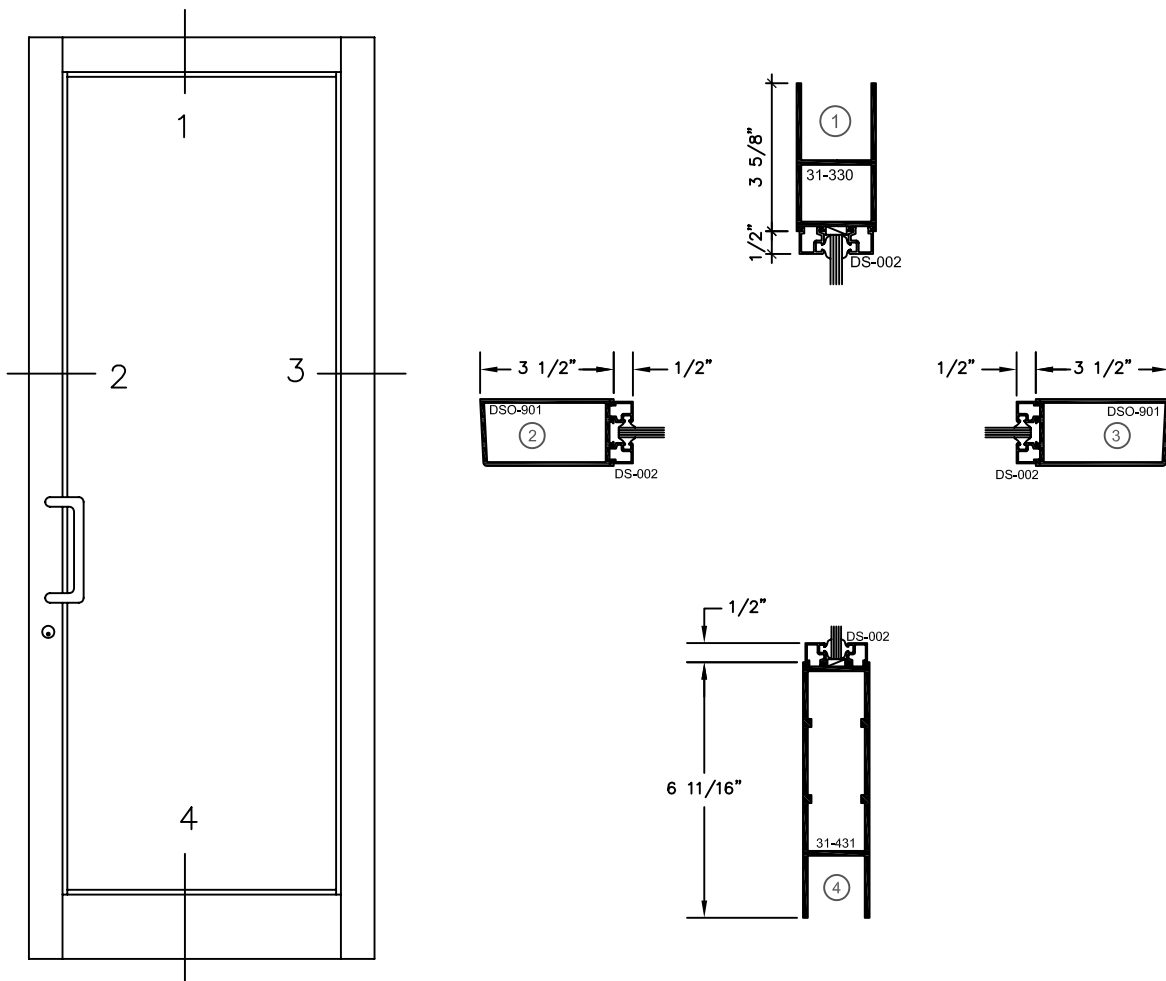


2301 E. Vernon Ave.  
Vernon, CA 90058  
866.443.7258  
323.908.5430  
323.908.5451 Fax

60 Bonner Street  
Stamford, CT 06902  
203.316.8033  
203.316.0019 Fax

www.wilsonpart.com

## MEDIUM STILE DOORS



### Typical Hardware: (Furnish Upon Request Only)

- Hager BB1279 4 1/2" x 4 1/2" Butt Hinges (.134)
- Adams Rite MS 1850 Deadbolt
- Arcadia 10" Standard Offset Pull (1" diameter)