

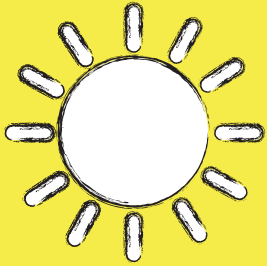
SPRING Move-OUT PROCEDURES

Questions?

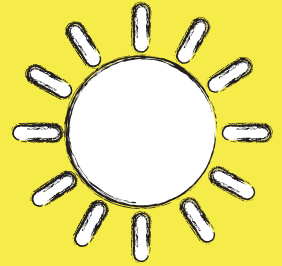
**See your RA or visit
the front desk of
your hall**



24- hour Quiet HOURS



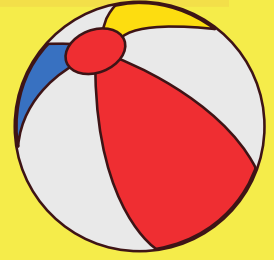
*Quiet Hours begin
Sunday, May 1
@ 10pm*



**Please respect
your studying
neighbors!**



HOW TO PROPERLY Move-Out!



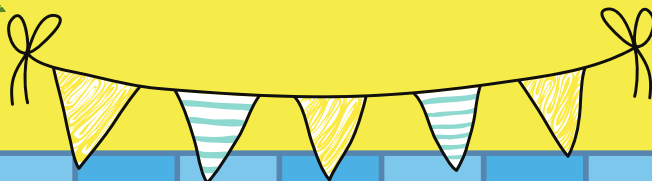
Sign up for your Move-Out time on sign up sheet outside your RA's door by May 3

Meet your RA at your room at your assigned move-out time

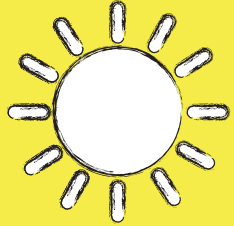
All residents must be moved out of the Halls by Thursday, May 12 unless approved otherwise

Use the Cleaning Agreement to avoid
any cleaning fees

Make sure your room is empty and clean at the time of your move out!



HALL CLOSING



ALL

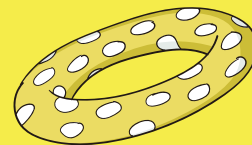
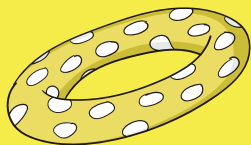
Residence Halls close
at noon on Thursday,
May 12.



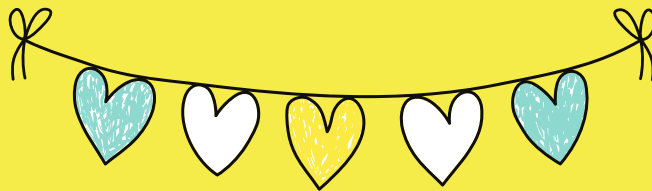
ATTENTION: GRADUATING SENIORS CONGRATULATIONS!



If you need to remain in the building past
noon on Thursday, May 12, complete the
late extension request by noon on
Friday, May 6



A limited number of extensions will be
approved for documented, extenuating
circumstances.



HAVE A GREAT SUMMER!!!



Pack and remove all of your belongings
from your room

Complete your Spring Move-Out Checklist
and your cleaning agreement

Meet your RA at your room at your move-
out time

All residents must be out of the Halls
before noon on May 12



SPRING CLOSING MOVE-OUT PROCEDURES

- Sign up for a move-out time outside your RA's door. Times are available on May 3 through May 12. Your move-out date should be no later than 24 hours after your last final is over.
- West Hall will be open for summer session. All halls close on May 12 at noon and you will no longer have access to the building. If you do not have a Summer Renewal contract, you are required to move out of the building by this time.
- Remove ALL your belongings and thoroughly clean your room, suite, and bathroom areas.
- Remove any personal bicycles stored on the bicycle racks. All bicycles left behind will be removed after closing.
- Vacuum your room and suite areas.
- Remove all trash to the dumpsters.
- Lower your bed (if necessary)
- Defrost and unplug your refrigerator at least 24 hours prior to your move-out time
- Lock all windows, close the blinds, and turn off all lights.
- Set your thermostat to 70 degrees and to the Auto/Cool settings.
- Complete move-out with your RA at your scheduled move-out time.
- Failure to return your suite/room keys will result in a \$80 lost key charge.

Remember! Be sure to complete all tasks to avoid any improper check-out charges!



2022 SPRING CLOSING

IMPORTANT DATES

- ✦ 4/25 Move-Out Sign Ups Open
- ✦ 4/25 Floor Meetings begin. See your RA's floor information board for details and be sure to attend so you have all necessary move-out information!
- ✦ 5/1 24-Hour Quiet Hours Begin
- ✦ 5/3 Deadline to sign up for a move-out time outside your RA's door.
- ✦ 5/6 Deadline to request for a late move-out out at noon.
- ✦ 5/12 The Connection Cafe will close after dinner.
- ✦ 5/12 Residence Halls close at noon unless you have received a written extension or you have signed a Summer Intersession Contract.
- ✦ 5/13 Spring to Summer moves between 8 a.m. and 3 p.m. If you are completing a Room/Hall change and have signed a summer housing contract to move to West Hall, you must do so between 8 a.m. and 3 p.m.

