

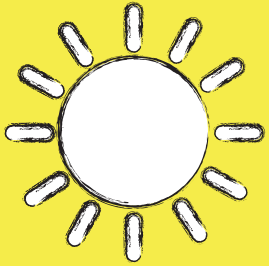
SPRING Move-OUT PROCEDURES

Questions?

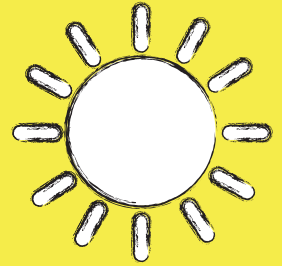
See your RA or visit
the front desk of
your hall



24-hour Quiet HOURS



*Quiet Hours begin
Sunday, April 28
@ 10pm*



**Please respect
your studying
neighbors!**



HOW TO PROPERLY

Check-Out!



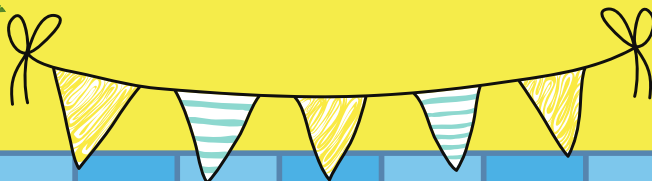
Sign up for your Move-Out time on sign up sheet outside your RA's door by April 30 at 5 p.m.

Meet your RA at your room at your assigned move-out time

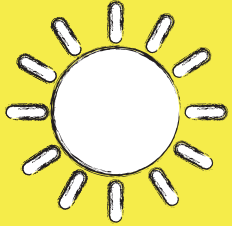
All residents must be moved out of the Halls by Thursday, May 9 unless approved otherwise

Use the Cleaning Agreement to avoid
any cleaning fees

Make sure your room is empty and clean at the time of your move out!



HALL CLOSING



ALL

Residence Halls close
at noon on Thursday,
May 9.



ATTENTION:

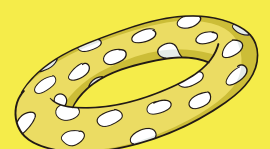
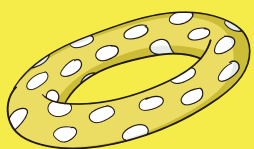


GRADUATING SENIORS

CONGRATULATIONS!



If you need to remain in the building past noon on Thursday, May 9, complete the late extension request by 5 p.m. on Sunday, April 28



A limited number of extensions will be approved for documented, extenuating circumstances.



HAVE A GREAT SUMMMER!!!



Pack and remove all of your belongings
from your room

Complete your Spring Move-Out Checklist
and your cleaning agreement

Meet your RA at your room at your move-
out time

All residents must be out of the Halls
before noon on May 9



SPRING CLOSING MOVE-OUT PROCEDURES

- Sign up for a move-out time outside your RA's door. Times are available on May 1 through May 9. Your move-out date should be no later than 24 hours after your last final is over.
- Arlington Hall will be open for summer session. All halls close on May 9 at noon and you will no longer have access to the building. If you do not have a Summer Renewal contract, you are required to move out of the building by this time.
- Remove ALL your belongings and thoroughly clean your room, suite, and bathroom areas.
- Remove any personal bicycles stored on the bicycle racks. All bicycles left behind will be removed after closing.
- Vacuum your room and suite areas.
- Remove all trash to the dumpsters.
- Lower your bed (if necessary)
- Defrost and unplug your refrigerator at least 24 hours prior to your move-out time
- Lock all windows, close the blinds, and turn off all lights.
- Set your thermostat to 70 degrees and to the Auto/Cool settings.
- Complete move-out with your RA at your scheduled move-out time.
- Failure to return your suite/room keys will result in a \$80 lost key charge.

Remember! Be sure to complete all tasks to avoid any improper check-out charges!



2024 SPRING CLOSING

IMPORTANT DATES

- ✦ 4/22 Move-Out Sign Ups Open

- ✦ 4/22 Floor Meetings begin. See your RA's floor information board for details and be sure to attend so you have all necessary move-out information!

- ✦ 4/28 24-Hour Quiet Hours Begin
- ✦ 4/28 Deadline to request for a late move-out out at noon.
- ✦ 4/30 Deadline to sign up for a move-out time outside your RA's door.

- ✦ 5/8 The Connection Cafe will close after dinner.

- ✦ 5/9 Residence Halls close at noon unless you have received a written extension or you have signed a Summer Intersession Contract.

- ✦ 5/10 Spring to Summer moves between 8 a.m. and 3 p.m. If you are completing a Room/Hall change and have signed a summer housing contract to move to Arlington Hall, you must do so between 8 a.m. and 3 p.m.

