

Reading the Plan

The EEP is organized around eight interconnected Key Themes that together create a comprehensive approach to campus sustainability and resilience. This guide explains how each theme is structured and how to navigate the detailed information within them.

Initiatives are the overarching approach toward improving upon the Key Themes

The Lead is the responsible party to ensure action items are progressing over time

The **definition** provides detail of what the chapter's Key Theme aims to accomplish

Co-benefits are shared positive gains that are achieved through a Key Theme, leading to faster and more cost-effective improvements

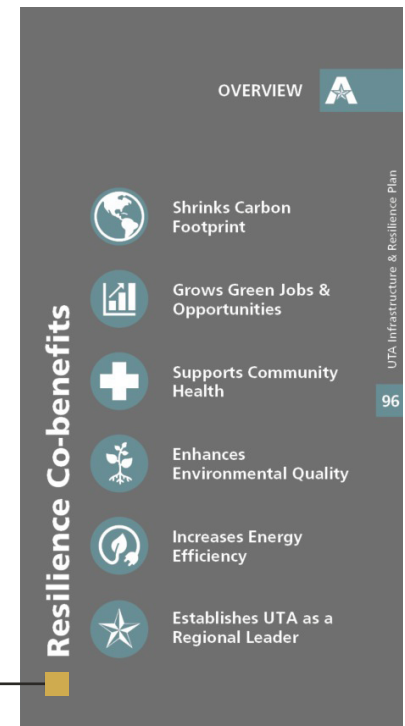
Initiative

Shift to resilient, low-carbon energy infrastructure

LEAD: Office of Facilities Management
with support from the Office of Sustainability

Definition

The key element of UTA's future is charting a path toward low-carbon operations. This section is an integration of much of what has been discussed before: high-performance buildings, improving resiliency on campus, understanding the constraints around the Texas grid, and tying them together to create a cohesive narrative around transitioning the university away from fossil fuels. This plan proposes a hybrid solution, leaving some legacy infrastructure in place to accommodate unforeseen peaks and extreme scenarios, but focuses primarily on the development of low-carbon options to guide UTA's future development.



The end of each section includes a table of strategies with identified goals for each Key Theme. The goals are ranked by priority and include detailed action items that will help UTA to progress in each.

Within each Key Theme, you'll find tabbed **sections** for the following:

Overview
Analysis of Conditions
Opportunities
Strategies

A goal with a cloud symbol is directly focused on long-term **resilience**

The colors in the **prioritization key** identify if a goal should be approached in the near, mid, or long term

PRIORITIZATION KEY
NEAR ■ ■ ■ LONG

Goal

STRATEGIES

Supportive **action items**
are beneath each goal

<p>Lower building-level Energy Use Intensity</p> <p>ACTION ITEMS 2</p>	<p>Deepen the granularity of energy data across the campus through building metering</p> <p>ACTION ITEMS 3</p>	<p>Transition energy infrastructure on campus</p> <p>ACTION ITEMS 3</p>	<p>Source 100% low-carbon energy</p> <p>ACTION ITEMS 3</p>
<p>Use the EnergyStar Portfolio Manager to benchmark and calculate energy project savings for all campus buildings</p> <hr/> <p>Match all purchased electricity generated by fossil sources with Green-e certified RECs</p>	<p>Establish overarching goals and specific, measurable targets related to energy and water at UTA (reducing GHG emissions, water reduction and conservation, etc.)</p> <hr/> <p>Move toward hourly energy analysis by metering individual buildings</p> <hr/> <p>Assess space utilization across all campus buildings</p>	<p>Transition thermal networks to low-temperature hot water at the building</p> <hr/> <p>Electrify building operations once power purchasing has been secured</p> <hr/> <p>Align major energy projects with campus master plan development</p>	<p>Utilize university power purchase contract to purchase green energy</p> <hr/> <p>Ensure all purchased energy is sourced from verified clean and renewable sources</p> <hr/> <p>Deploy solar power generation where possible - Install solar panels across campus including on both roofs/parking and coordinate opportunities for solar to provide shading</p>