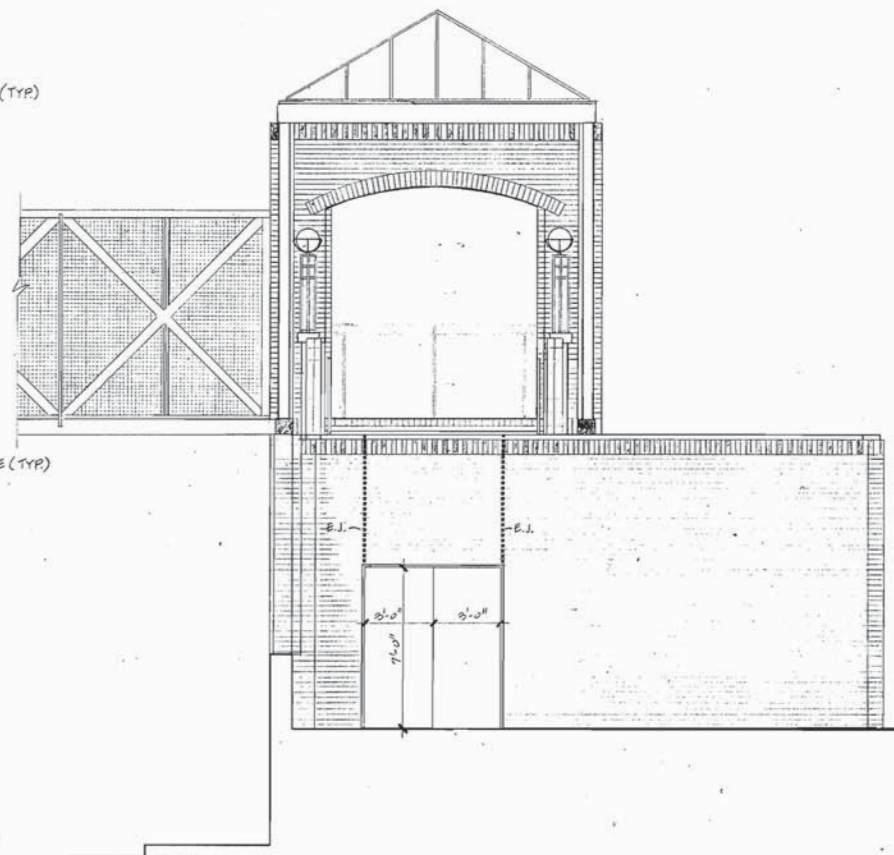
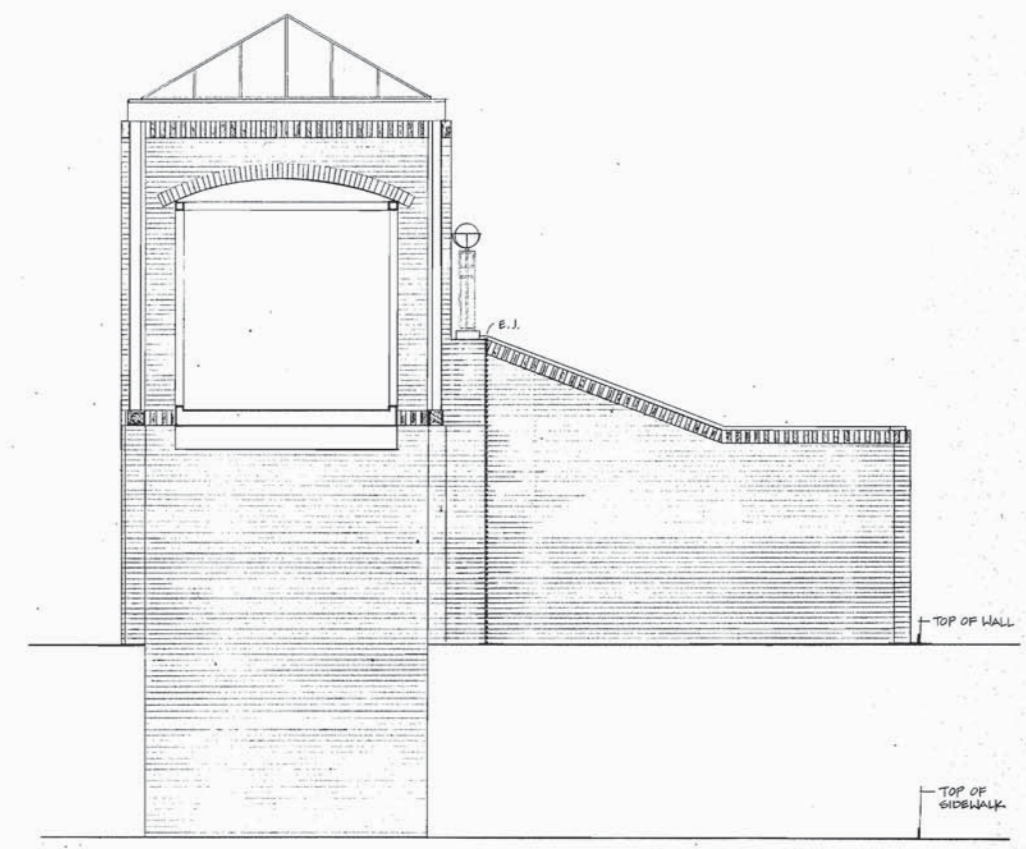


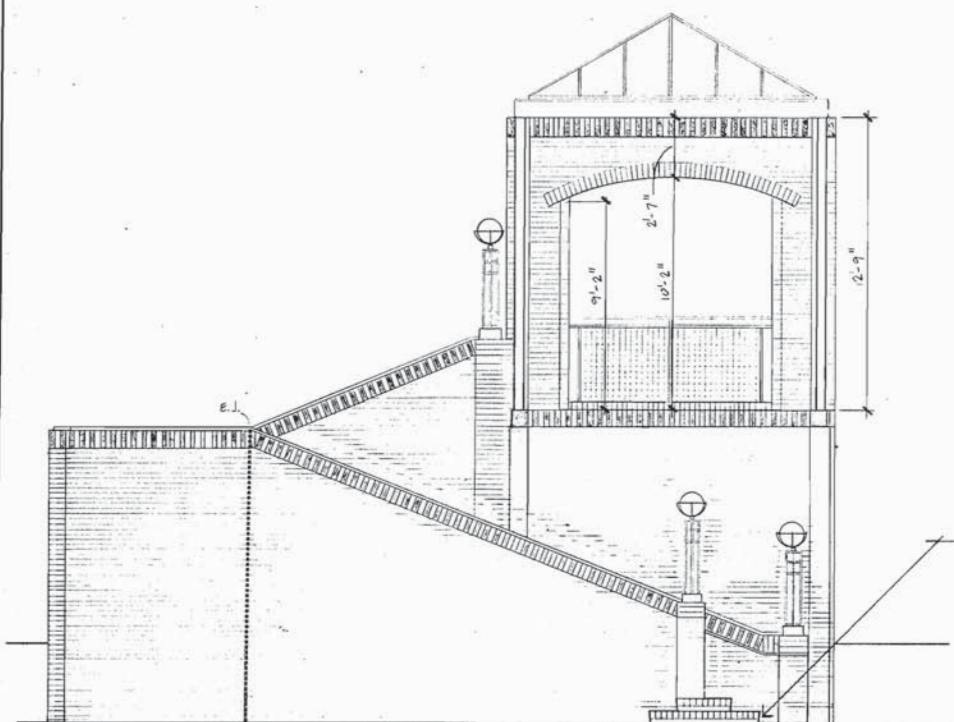
A EAST SIDE OF COOPER STREET-NORTH ELEVATION
(SOUTH ELEVATION FOR WEST SIDE OF COOPER STREET) N.T.S.



B EAST SIDE OF COOPER STREET-SOUTH ELEVATION
(NORTH ELEVATION FOR WEST SIDE OF COOPER STREET) N.T.S.



C EAST SIDE OF COOPER STREET - WEST ELEVATION
(EAST ELEVATION FOR WEST SIDE OF COOPER STREET) N.T.S.

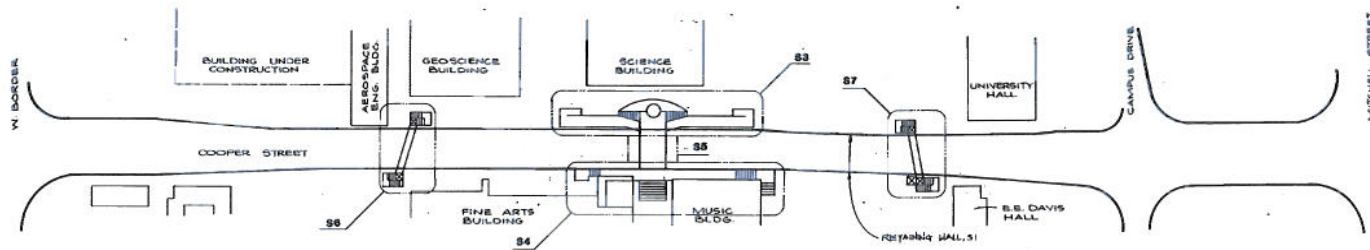


NOTE: SEE EAST AND WEST SIDE TOWER PLANS (A3-2) FOR LOCATION OF FIRST RISER

D EAST SIDE OF COOPER STREET - EAST ELEVATION
(WEST ELEVATION FOR WEST SIDE OF COOPER STREET) N.T.S.

DESIGNED:		PROJECT NO.		DATE		SHEET	
PSN		C 0747-04-026		JAN 88		A3-3	
DRAWN:		STATE		COUNTY		SECTION	
PSN		TEXAS		TARRANT		04 026	
TRACED:		DIST. NO.		SHEET NO.		SHEET	
		2		A3-3		A3-3	





KEY PLAN
 SCALE: 1" = 100'
 NORTH UTILITY TUNNEL @
 CENTER RANGE,
 CODE 22

INDEX

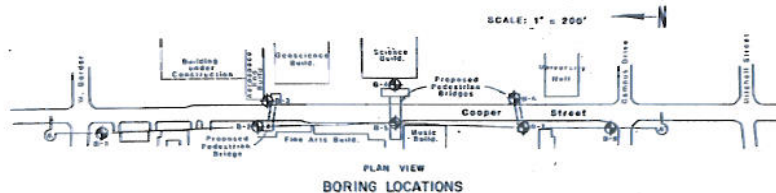
No.	Drawing
S0-1	Key Plan
S0-2	General Notes
S0-3	Foundation Schedule & Details
S0-4	Typical Details & Schedules
S0-5	Typical Details
S0-6	Boring Logs
S0-7	Boring Logs
S1-1	East Retaining Wall 'A' Layout
S1-2	East Retaining Wall 'B' & 'C' Layout
S1-3	East Retaining Wall 'D' Layout
S1-4	West Retaining Wall 'E' & 'F' Layout
S1-5	West Retaining Wall 'G' Layout
S1-6	West Retaining Wall 'H' Layout
S1-7	Retaining Wall Details
S1-8	Retaining Wall Details
S1-9	Retaining Wall Details
S1-10	Retaining Wall Details
S1-11	Retaining Wall Bill of Materials
S1-12	Retaining Wall Bill of Materials
S1-13	Retaining Wall Bill of Materials
S2-1	Utility Tunnel Plan Profile
S2-2	Utility Tunnel Sections & Details
S2-3	Utility Tunnel Sections & Details
S3-1	Center Bridge: Plan & Profile
S3-2	Center Bridge: East Landing Foundation Plan
S3-3	Center Bridge: East Landing Foundation Partial Plan
S3-4	Center Bridge: East Abutment Elevation
S3-5	Center Bridge: East Abutment Partial Elevation
S3-6	Center Bridge: East Abutment Details
S3-7	Center Bridge: East Abutment Details
S3-8	Center Bridge: East Abutment Details
S3-9	Center Bridge: East Foundation Details
S3-10	Center Bridge: East Abutment Bill of Materials
S3-11	Center Bridge: East Landing Framing Plan
S3-12	Center Bridge: East Landing Framing Plan
S3-13	Center Bridge: East Landing Framing Sections
S3-14	Center Bridge: East Landing Framing Sections
S3-15	Center Bridge: East Landing Framing Sections

INDEX CONTINUED

No.	Drawing
S4-1	Center Bridge: West Landing Foundation Plan
S4-2	Center Bridge: West Landing Foundation Partial Plan
S4-3	Center Bridge: West Landing Foundation Partial Plan
S4-4	Center Bridge: West Abutment Elevation
S4-5	Center Bridge: West Abutment Partial Elevation
S4-6	Center Bridge: West Abutment Details
S4-7	Center Bridge: West Abutment Details
S4-8	Center Bridge: West Foundation Details
S4-9	Center Bridge: Foundation Details & Bill of Materials
S4-10	Center Bridge: West Landing Framing Plan
S4-11	Center Bridge: West Landing Framing Partial Plan
S4-12	Center Bridge: West Landing Framing Partial Plan
S4-13	Center Bridge: West Landing Framing Sections
S4-14	Center Bridge: West Landing Framing Sections
S4-15	Center Bridge: West Landing Framing Sections
S5-1	Center Bridge: Bridge Framing Plan
S5-2	Center Bridge: Cross Section & Details
S5-3	Center Bridge: Bridge Details
S5-4	Center Bridge: Bridge Details

INDEX CONTINUED

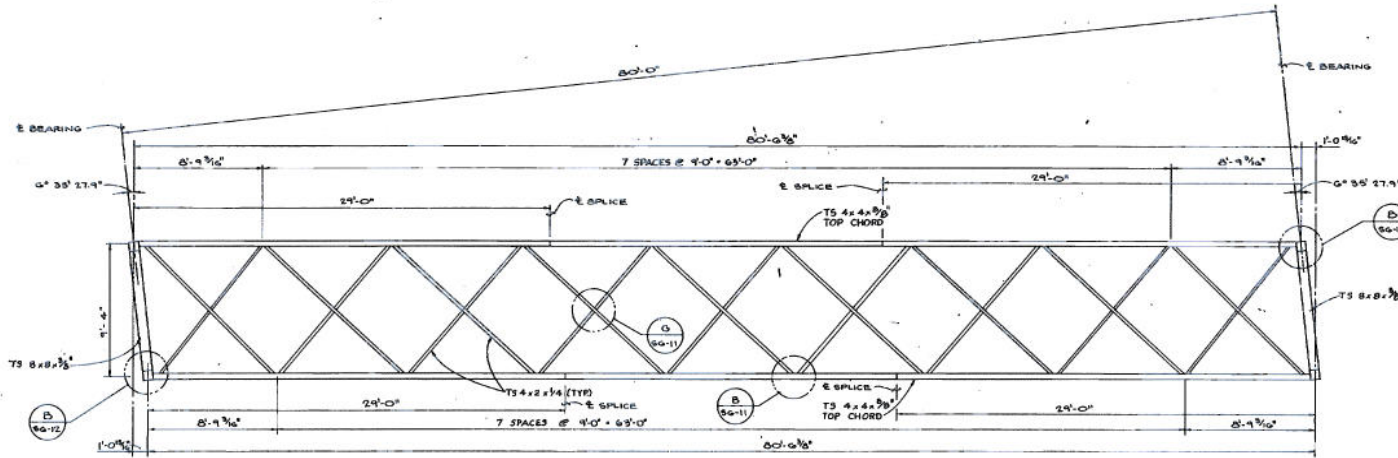
No.	Drawing
S6-1	North Bridge: Bridge Layout
S6-2	North Bridge: Foundation Plan
S6-3	North Bridge: East Abutment Details
S6-4	North Bridge: East Abutment Details
S6-5	North Bridge: West Abutment Details
S6-6	North Bridge: Foundation Details
S6-7	North Bridge: Foundation B.O.M.
S6-8	North Bridge: Landing Framing Plan
S6-9	North Bridge: Landing Framing Details
S6-10	North Bridge: Bridge Framing Plans
S6-11	North Bridge: Bridge Elevation & Details
S6-12	North Bridge: Bridge Framing Details
S7-1	South Bridge: Bridge Layout
S7-2	South Bridge: Foundation Plan
S7-3	South Bridge: Abutment Elevations
S7-4	South Bridge: Foundation Details
S7-5	South Bridge: Foundation Details
S7-6	South Bridge: Foundation Details
S7-7	South Bridge: B.O.M.
S7-8	South Bridge: Landing Framing Plan
S7-9	South Bridge: Landing Framing Details
S7-10	South Bridge: Elevator Framing Details
S7-11	South Bridge: Bridge Framing Plans
S7-12	South Bridge: Bridge Elevation and Details
S7-13	South Bridge: Bridge Framing Plans



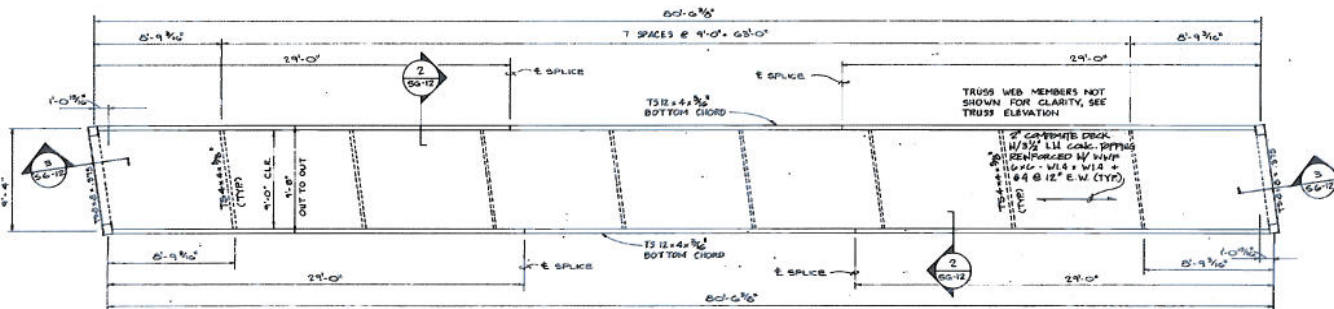
PLAN VIEW BORING LOCATIONS

REVISIONS			
UNIVERSITY OF TEXAS AT ARLINGTON COOPER STREET DEPRESSION			
KEY PLAN			
CARTER & BURGESS, INC. ENGINEERS - PLANNERS 1100 MASON STREET / FORT WORTH, TEXAS 76102			
SUBJ.	APPD.	PROJECT NO.	DATE
DESIGNED: EWG	PROJECT NO. 301-592	DATE JAN 80	SHEET 0421
DRAWN: WL			
TRACED:			
SHEET 04	OF 020		
DESIGNED BY	DATE	PROJECT NO.	SHEET NO.
DRAWN BY			
CHECKED BY			
APPROVED BY			
5	TARRANT	0747	04 020 80-1

Copyright © 1988 by Carter & Burgess, Inc.



A UPPER FRAMING PLAN
1/4" = 1'-0"



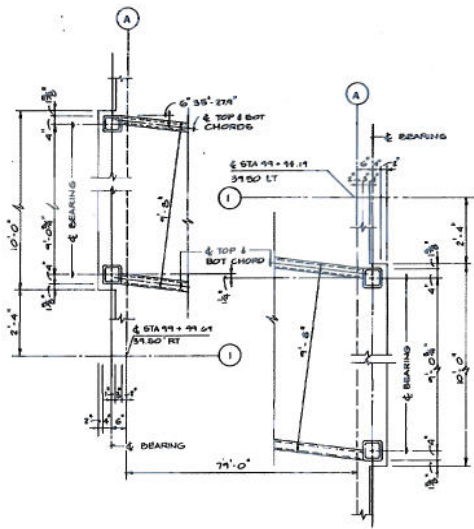
B LOWER FRAMING PLAN
1/4" = 1'-0"



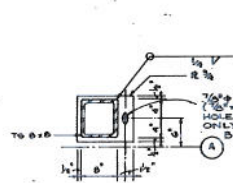
BRIDGE QUANTITIES	
ITEM	QUANTITY
STRUCTURAL STEEL (ASCO)	14,393 LBS
CLASS 'H' CONCRETE	10.2 C.Y.
REINFORCING STEEL (B-SIZES W/SPACING IN CLUSTERS)	760 LBS
METAL DECK	725 S.F.
STRUCTURAL STEEL (HYC)	595 LBS

REVISIONS			
UNIVERSITY OF TEXAS AT ARLINGTON COOPER STREET DEPRESSION NORTH BRIDGE BRIDGE FRAMING PLANS			
CARTER & BURCESS, INC. ENGINEERS - PLANNERS 1100 MASON STREET / FORT WORTH, TEXAS 76102			
SUB.	APPD.	PROJECT NO.	DATE
DESIGNED: RYO	PROJECT NO. 301-592	DATE	88-10
DRAWN: JKS			
TRACED:			
SHEET NO. 02 OF 02			
OWNER	NO. 02	PROJECT NO.	DATE
UNIVERSITY OF TEXAS AT ARLINGTON	02	C 0747-06-028	FEB 197
PROJECT	NO. 02	PROJECT NO.	DATE
02	02	0747-06-028	FEB 197
OWNER	NO. 02	PROJECT NO.	DATE
02	02	0747-06-028	FEB 197

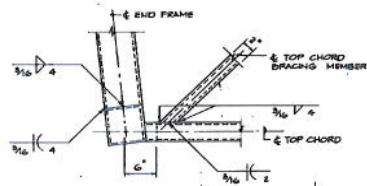




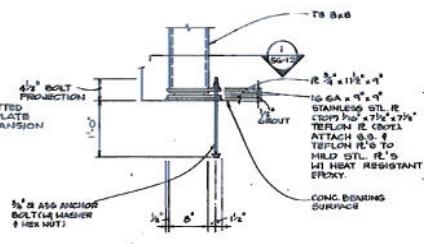
A NORTH BRIDGE LAYOUT
1/4" = 1'-0"



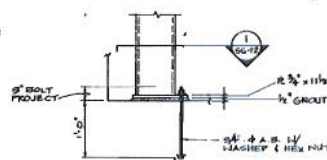
1 DETAIL
1" = 1'-0"



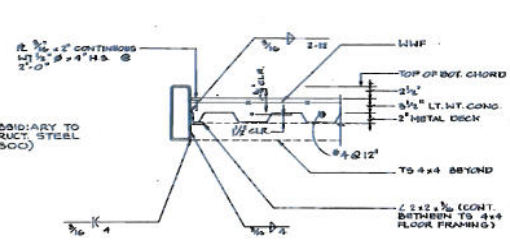
B DETAIL
1" = 1'-0"



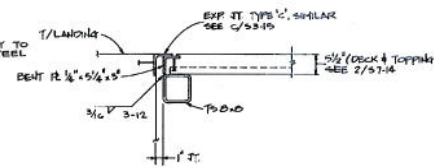
C EXPANSION BRG DETAIL
NOTE: SLOT 1/2\"/>



D FIXED BEARING DETAIL
1" = 1'-0"



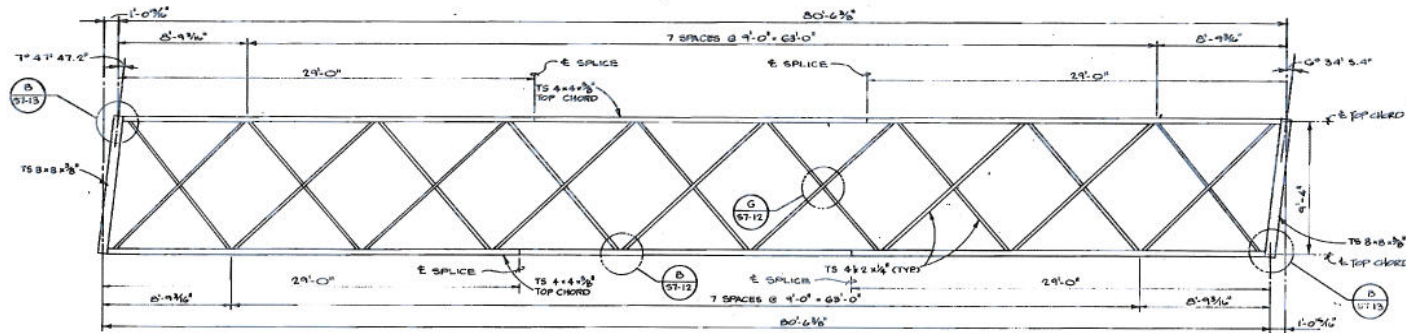
2 DETAIL
1" = 1'-0"



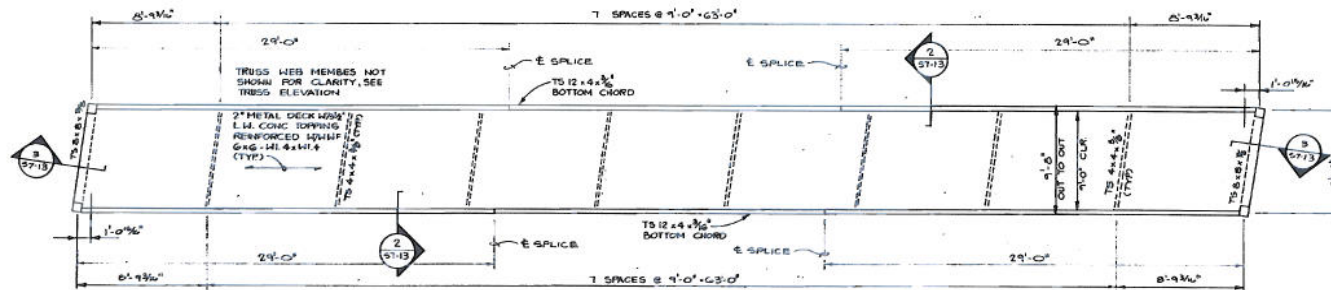
3 SECTION
3/4" = 1'-0"

REVISIONS			
UNIVERSITY OF TEXAS AT ARLINGTON COOPER STREET DEPRESSION NORTH BRIDGE BRIDGE FRAMING DETAILS			
CARTER & BURGESS, INC. ENGINEERS - PLANNERS 1100 MACON STREET / FORT WORTH, TEXAS 76102			
SUB	APPR.	PROJECT NO.	DATE
DESIGNED: RWO	CHKD: WL	301-592	JAN 88
CHECKED:	TRACED:		
SHEET		OF SHEETS	
DESIGNED	CHKD	STATE	PROJECT NO.
TRACED	DATE	TXAS	C 0747-04-028
DATE	BY	NO.	REV.
01/88	RWO	01	01
01/88	WL	02	01
01/88	WL	03	01
01/88	WL	04	01
01/88	WL	05	01
01/88	WL	06	01
01/88	WL	07	01
01/88	WL	08	01
01/88	WL	09	01
01/88	WL	10	01
01/88	WL	11	01
01/88	WL	12	01
01/88	WL	13	01
01/88	WL	14	01
01/88	WL	15	01
01/88	WL	16	01
01/88	WL	17	01
01/88	WL	18	01
01/88	WL	19	01
01/88	WL	20	01
01/88	WL	21	01
01/88	WL	22	01
01/88	WL	23	01
01/88	WL	24	01
01/88	WL	25	01
01/88	WL	26	01
01/88	WL	27	01
01/88	WL	28	01
01/88	WL	29	01
01/88	WL	30	01
01/88	WL	31	01
01/88	WL	32	01
01/88	WL	33	01
01/88	WL	34	01
01/88	WL	35	01
01/88	WL	36	01
01/88	WL	37	01
01/88	WL	38	01
01/88	WL	39	01
01/88	WL	40	01
01/88	WL	41	01
01/88	WL	42	01
01/88	WL	43	01
01/88	WL	44	01
01/88	WL	45	01
01/88	WL	46	01
01/88	WL	47	01
01/88	WL	48	01
01/88	WL	49	01
01/88	WL	50	01
01/88	WL	51	01
01/88	WL	52	01
01/88	WL	53	01
01/88	WL	54	01
01/88	WL	55	01
01/88	WL	56	01
01/88	WL	57	01
01/88	WL	58	01
01/88	WL	59	01
01/88	WL	60	01
01/88	WL	61	01
01/88	WL	62	01
01/88	WL	63	01
01/88	WL	64	01
01/88	WL	65	01
01/88	WL	66	01
01/88	WL	67	01
01/88	WL	68	01
01/88	WL	69	01
01/88	WL	70	01
01/88	WL	71	01
01/88	WL	72	01
01/88	WL	73	01
01/88	WL	74	01
01/88	WL	75	01
01/88	WL	76	01
01/88	WL	77	01
01/88	WL	78	01
01/88	WL	79	01
01/88	WL	80	01
01/88	WL	81	01
01/88	WL	82	01
01/88	WL	83	01
01/88	WL	84	01
01/88	WL	85	01
01/88	WL	86	01
01/88	WL	87	01
01/88	WL	88	01
01/88	WL	89	01
01/88	WL	90	01
01/88	WL	91	01
01/88	WL	92	01
01/88	WL	93	01
01/88	WL	94	01
01/88	WL	95	01
01/88	WL	96	01
01/88	WL	97	01
01/88	WL	98	01
01/88	WL	99	01
01/88	WL	100	01





A UPPER FRAMING PLAN
1/4" = 1'-0"



B LOWER FRAMING PLAN
1/4" = 1'-0"

BRIDGE QUANTITIES	
ITEM	QUANTITY
STRUCTURAL STEEL (A500)	5,303 LBS
CLASS 1H CONCRETE	10.2 C.Y.
REINFORCING STEEL (WELDED WIRE FABRIC INCLUDED)	760 LBS
METAL DECK	725 S.F.
STRUCT STEEL (HYC)	596 LBS

REVISIONS			
NO.	DATE	BY	DESCRIPTION

UNIVERSITY OF TEXAS AT ARLINGTON
COOPER STREET DEPRESSION
SOUTH BRIDGE
BRIDGE FRAMING PLANS

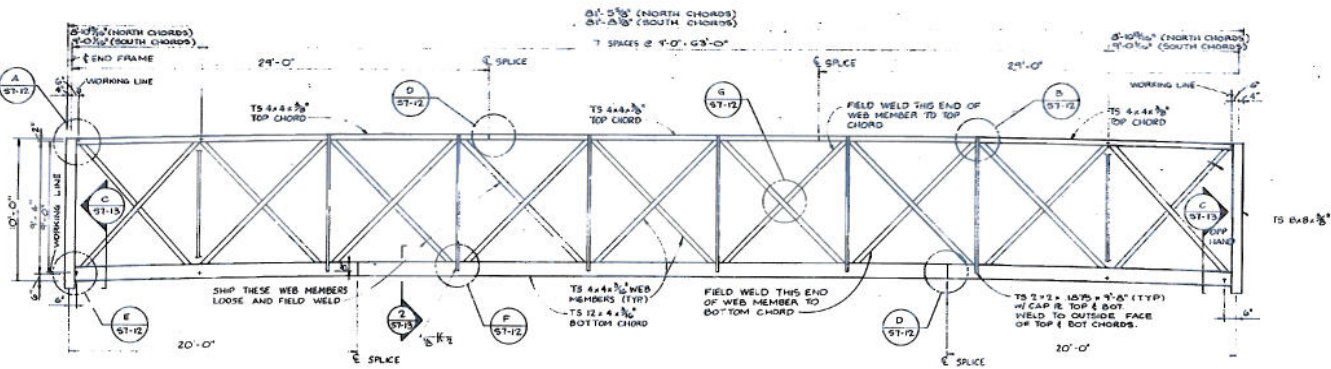
CARTER & BURRESS, INC.
ENGINEERS - PLANNERS
1100 MACHO STREET / FORT WORTH, TEXAS 76102

SUB.	APPD.	PROJECT NO.	DATE	SHEET
DESIGNED: RVD		301-592	JAN 08	07-11
CHECKED: GDB & WFL				
TRACED:				

NO.	DATE	BY	PROJECT NO.	SHEET NO.

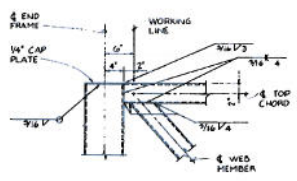
Copyright © 1998 by Carter & Burgess, Inc.



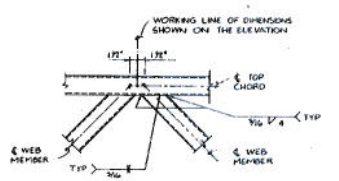


A TRUSS ELEVATION
1/4" = 1'-0"

NOTE CAMBER TRUSS OF AT MIDSPAN

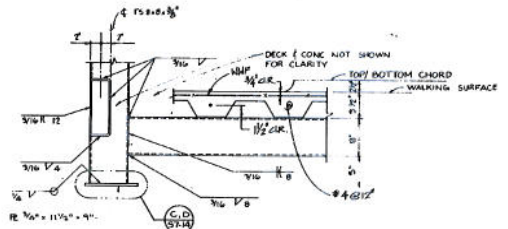


A DETAIL
1/4" = 0"

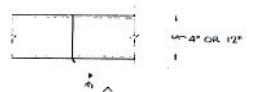


B DETAIL
1/4" = 0"

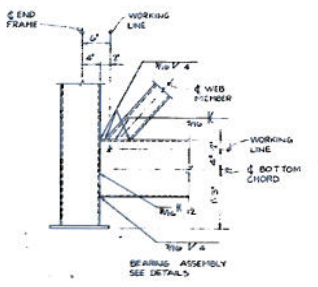
NOTE: TS 2x2 NOT SHOWN



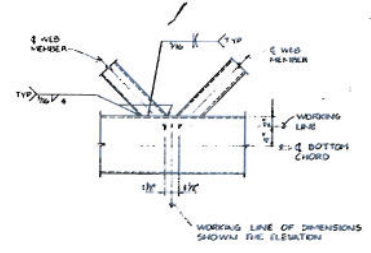
C DETAIL
1/4" = 0"



D DETAIL
1/4" = 0"

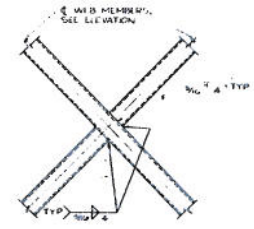


E DETAIL
1/4" = 0"



F DETAIL
1/4" = 0"

NOTE: TS 2x2 NOT SHOWN



G DETAIL
1/4" = 0"

REVISIONS			
NO.	DATE	BY	DESCRIPTION

UNIVERSITY OF TEXAS AT ARLINGTON
COOPER STREET DEPRESSION
SOUTH BRIDGE
BRIDGE ELEVATION & DETAILS

CARTER & BURRESS, INC.
ENGINEERS - PLANNERS
1100 MASON STREET / FORT WORTH, TEXAS 76102

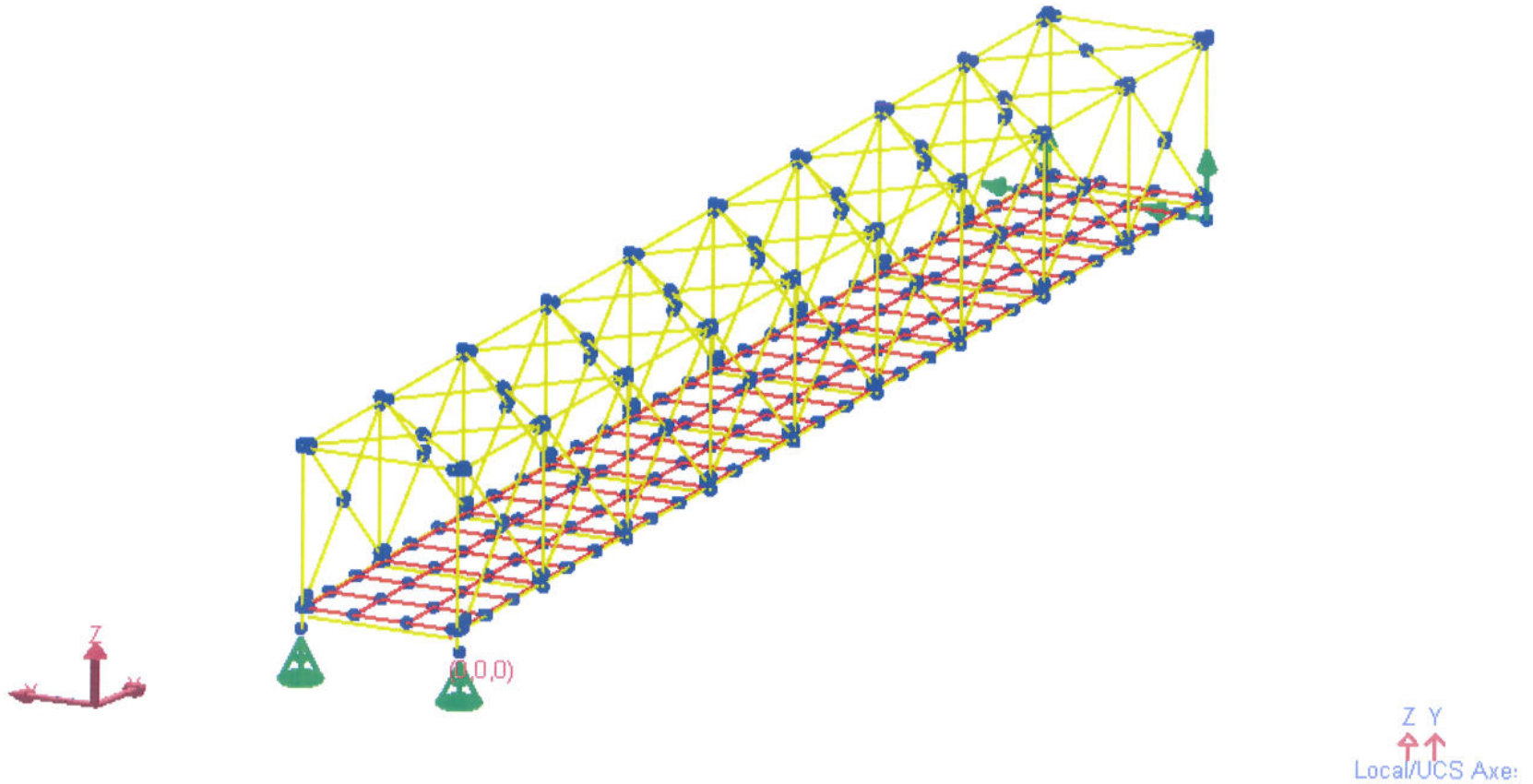
DESIGNED: RWO	PROJECT NO. 301-592	DATE JAN 88	SHEET 57-12
DRAWN: JKB			
TRACED:			

STATE OF TEXAS
BRIDGE ENGINEER
JERRY W. WILSON

OWNER	PROJECT NO.	DATE	SHEET NO.
STATE OF TEXAS	C 0747-04-026	FEB 1977	57-12
PROJECT NO.	DATE	BY	NO.
2 TARRANT	0747 04 026	57-12	

Graphics View 1

Zoom 1.953X



melanie.letendre





UNIVERSITY OF TEXAS  ARLINGTON



UNIVERSITY OF TEXAS  ARLINGTON



UNIVERSITY OF TEXAS



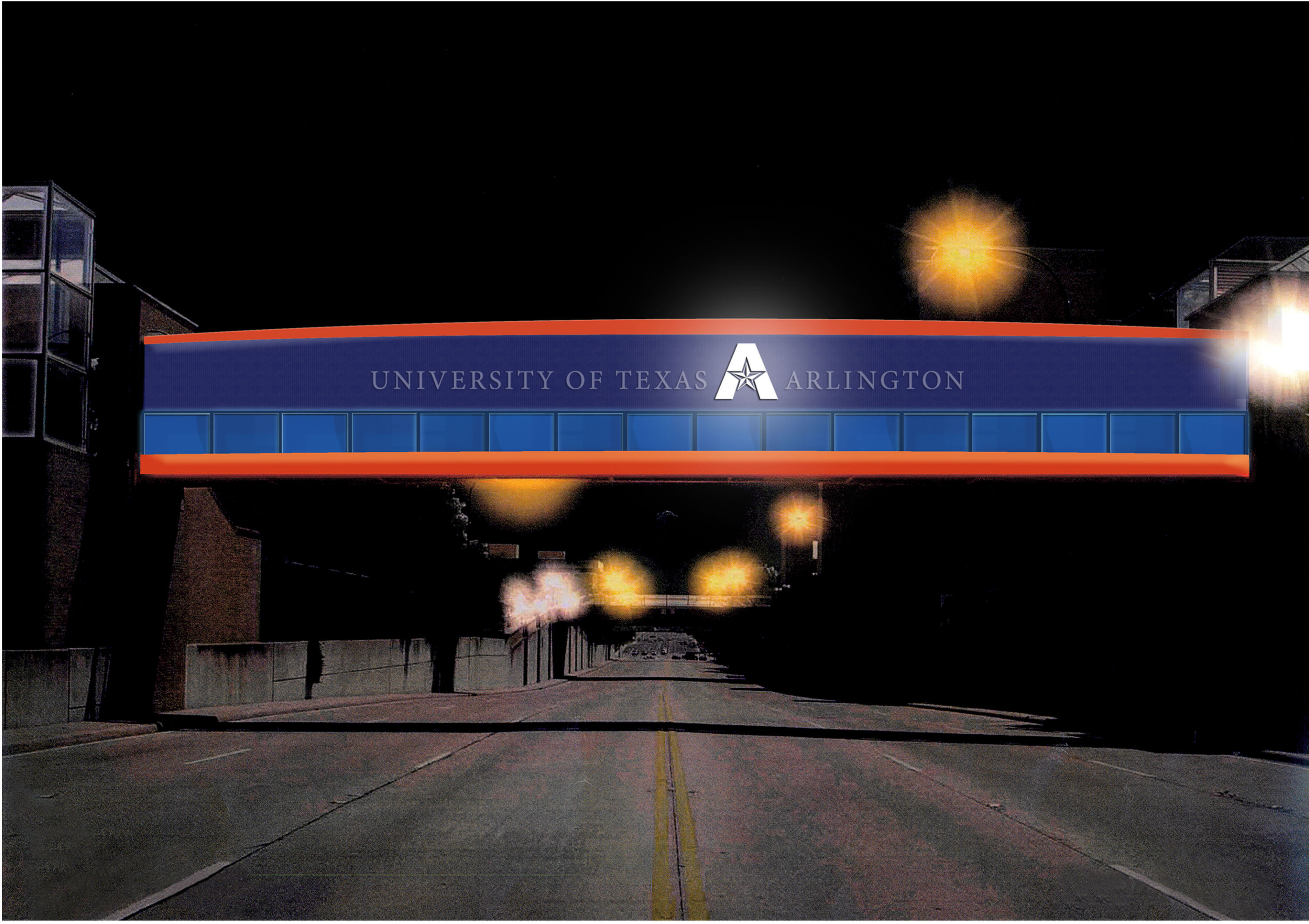
ARLINGTON



UNIVERSITY OF TEXAS  ARLINGTON



UNIVERSITY OF TEXAS  ARLINGTON



UNIVERSITY OF TEXAS  ARLINGTON





UNIVERSITY OF TEXAS  ARLINGTON



UNIVERSITY OF TEXAS  ARLINGTON





WELCOME TO
MAVERICK COUNTRY





UNIVERSITY OF TEXAS  ARLINGTON



UNIVERSITY OF TEXAS  ARLINGTON





UNIVERSITY OF TEXAS A ARLINGTON



