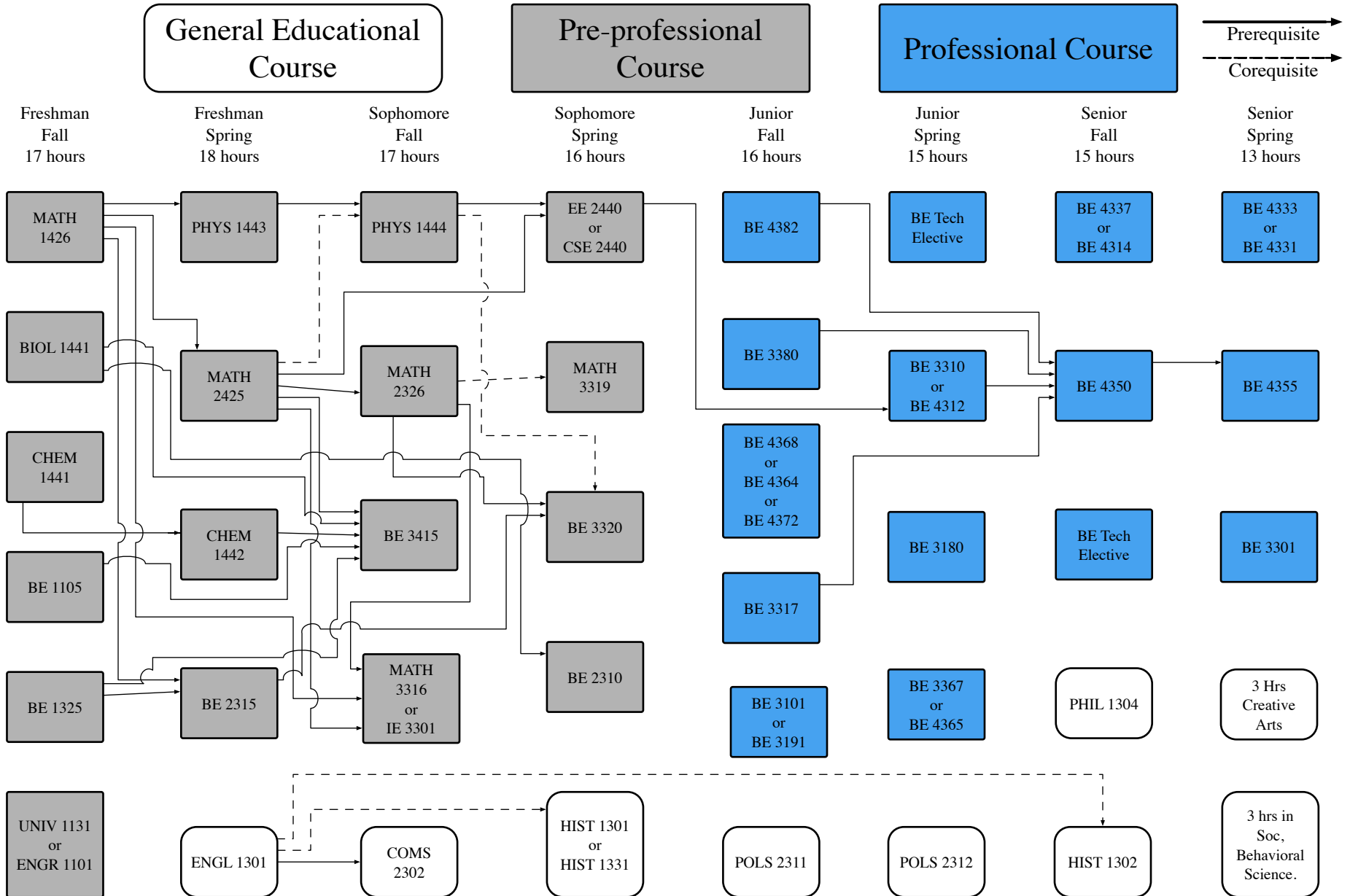


# 2023 - 2024 Biomedical Engineering Curriculum Flow Chart

## Tissue Engineering Concentration



Students in Pre-Professional Program must complete all SCI/ENG/MATH courses (not including statistics), BE 3415, 3320, ENGL 1301 and COMS 2302 prior to taking any Professional Program courses.  
 Admission to Professional Program is required to take any Professional Program courses.