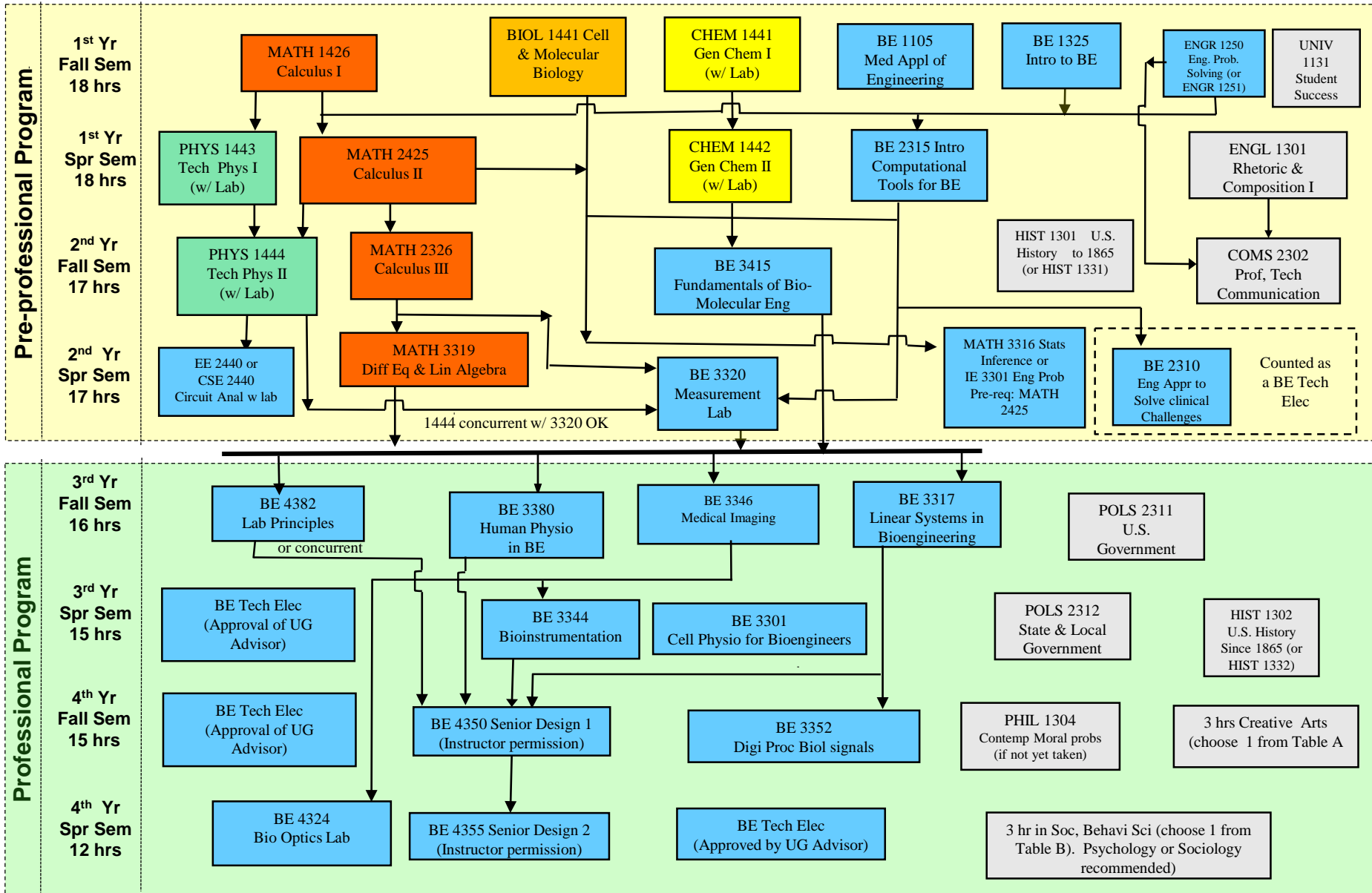


Flow chart - Bachelor of Science Degree in Biomedical Engineering (2020-21)

Medical Imaging Concentration

→ Prerequisite



Students in Pre-Professional Program must complete all Sci/Eng/Math courses (not including statistics), BE 3415, 3320, ENGL1301 and COMS2302 prior to taking any Professional Program courses. Admission to Professional Program is required to take any Professional Program courses.

This document is subject to revision.
 Updated 4/15/2020