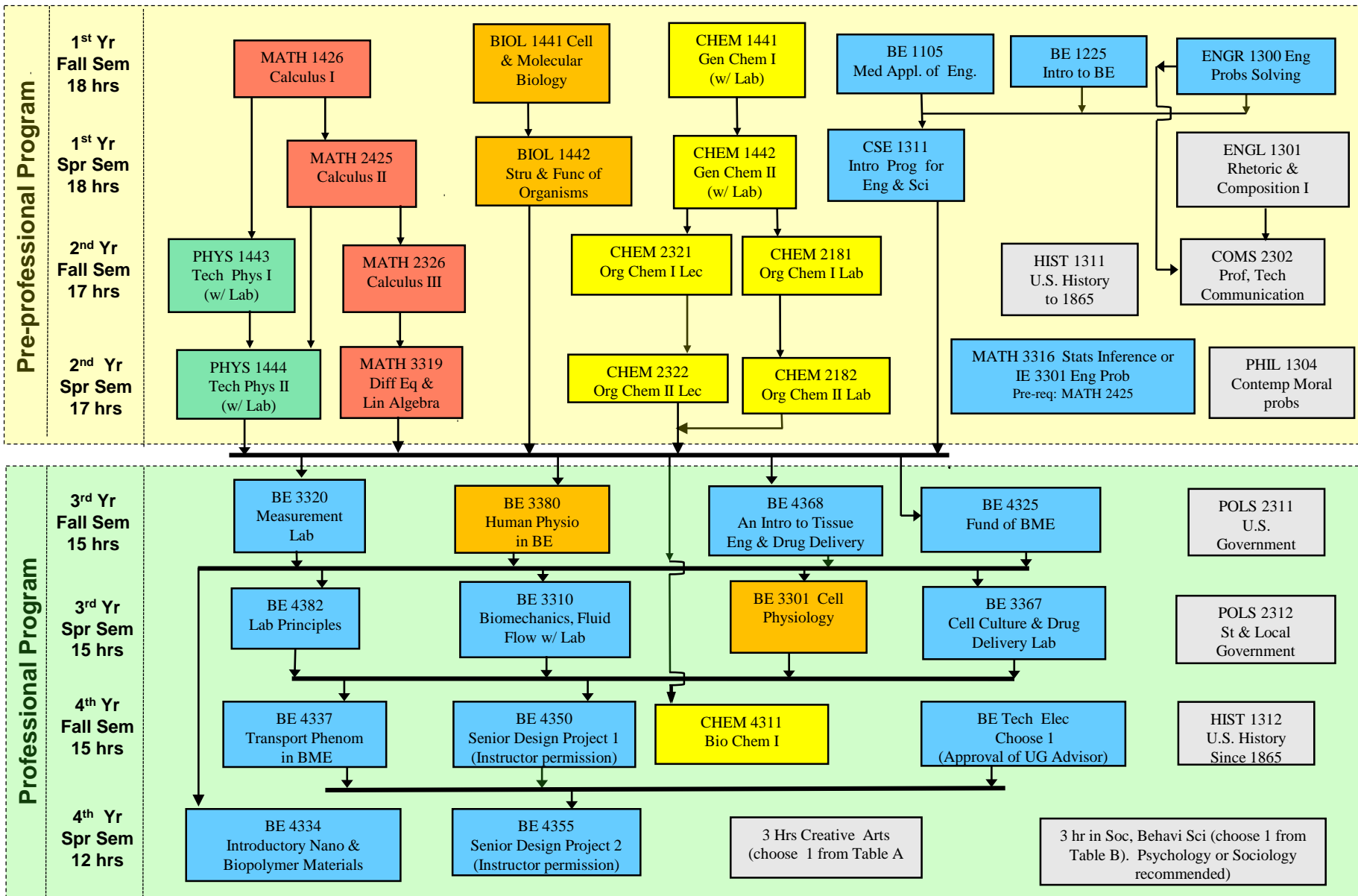


Flow Chart - Bachelor of Science Degree in Biomedical Engineering (2015-16)

Tissue Engineering (TE) Concentration

→ Prerequisite



Students in Pre-Professional Program need to complete all Sci/Eng/Math courses (not including statistics) and at least 2 out of 4 general education courses (including ENGL1301, COMS2302), prior to taking any Professional Program courses. Admission to Professional Program is required to take any Professional Program courses.

This document is subject to revision.
Updated 4/7/2015