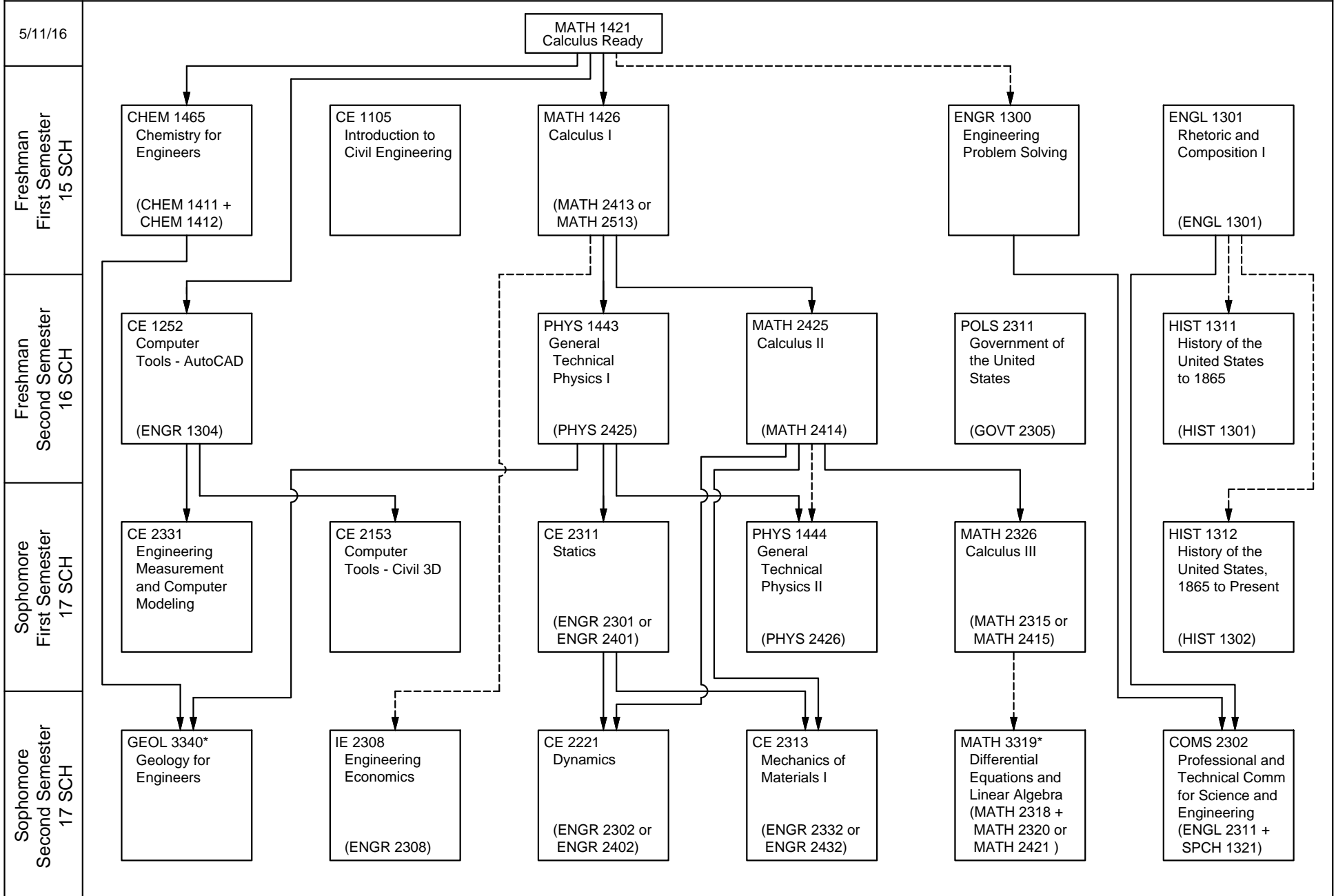




B. S. Civil Engineering 2016-2017

Prerequisite —————>
Co-requisite - - - - ->

(ENGL 1301) Equivalent Texas Common Course Number (TCCN)
(ENGR 1201* Equivalent TCCN with additional requirements for full credit
CE 3210* CE Professional Program Course



B. S. Civil Engineering 2016-2017

Prerequisite 
Co-requisite 

CE 3210* CE Professional Program Course

