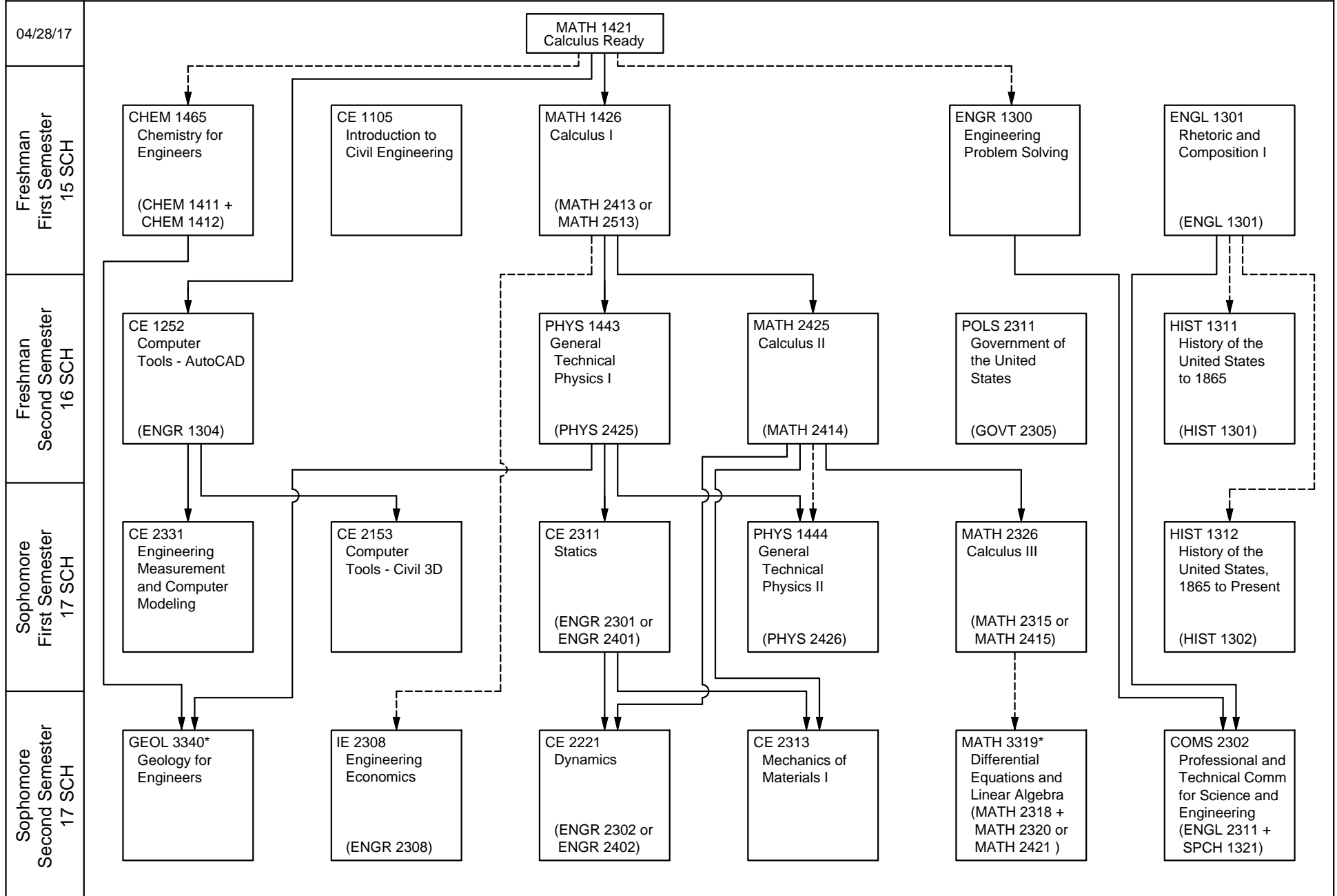


B. S. Civil Engineering 2017-2018

Prerequisite ———→
Co-requisite - - - - -→

(ENGL 1301) Equivalent Texas Common Course Number (TCCN)
CE 3210* CE Professional Program Course



B. S. Civil Engineering 2017-2018

Prerequisite —————>
Co-requisite - - - - ->

CE 3210* CE Professional Program Course

