

# B. S. Civil Engineering 2018-2019

Prerequisite —————>  
Co-requisite - - - - ->

(ENGL 1301) Equivalent Texas Common Course Number (TCCN)  
CE 3210\* CE Professional Program Course  
UNIV 1131\* Students admitted as Freshmen must take UNIV 1131  
ENGR 1101\* Students admitted as Transfer must take ENGR 1101

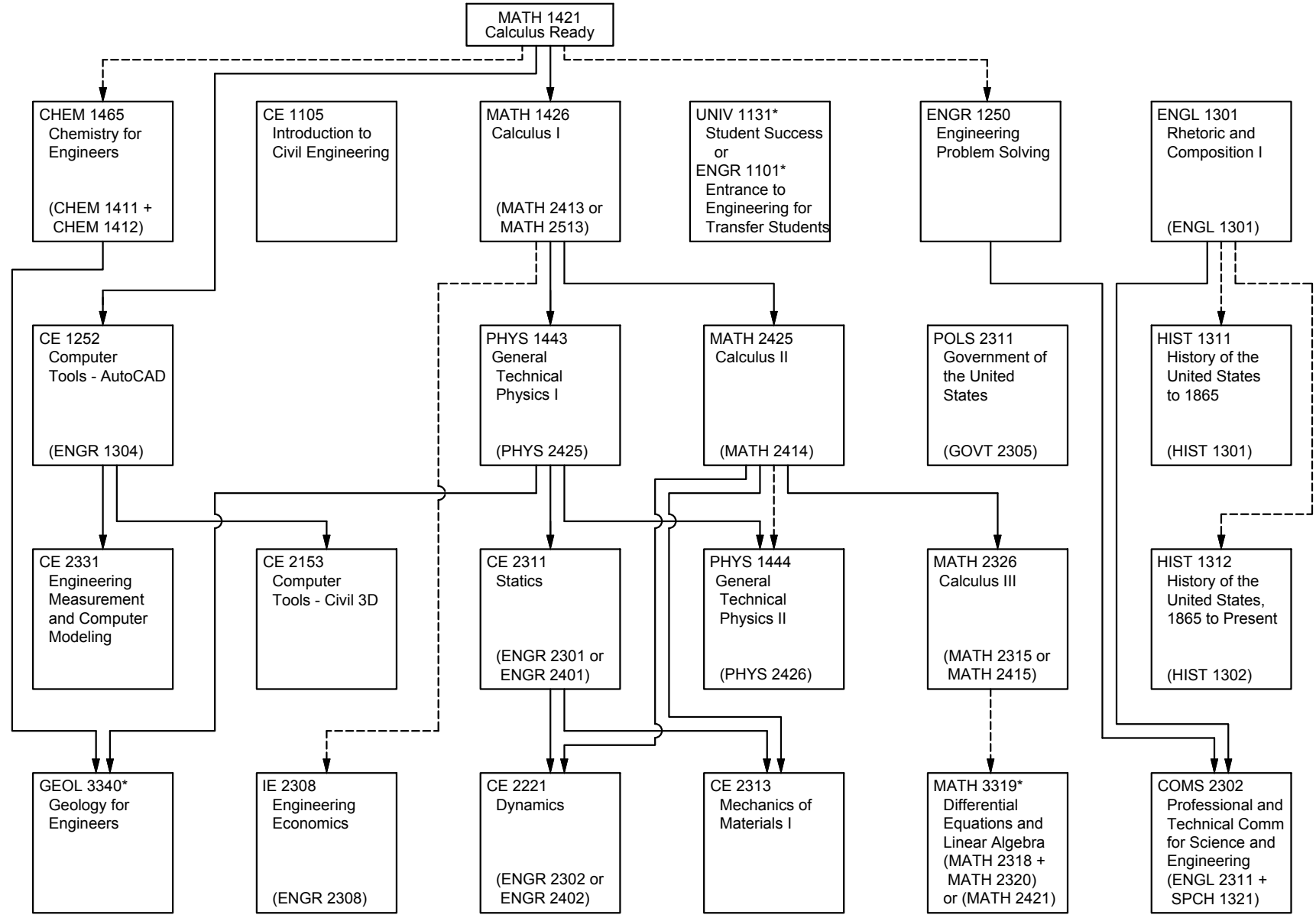
07/03/18

Freshman  
First Semester  
15 SCH



Freshman  
Second Semester  
16 SCH

Sophomore  
First Semester  
17 SCH

Sophomore  
Second Semester  
17 SCH



# B. S. Civil Engineering 2018-2019

Prerequisite   
Co-requisite 

CE 3210\* CE Professional Program Course

