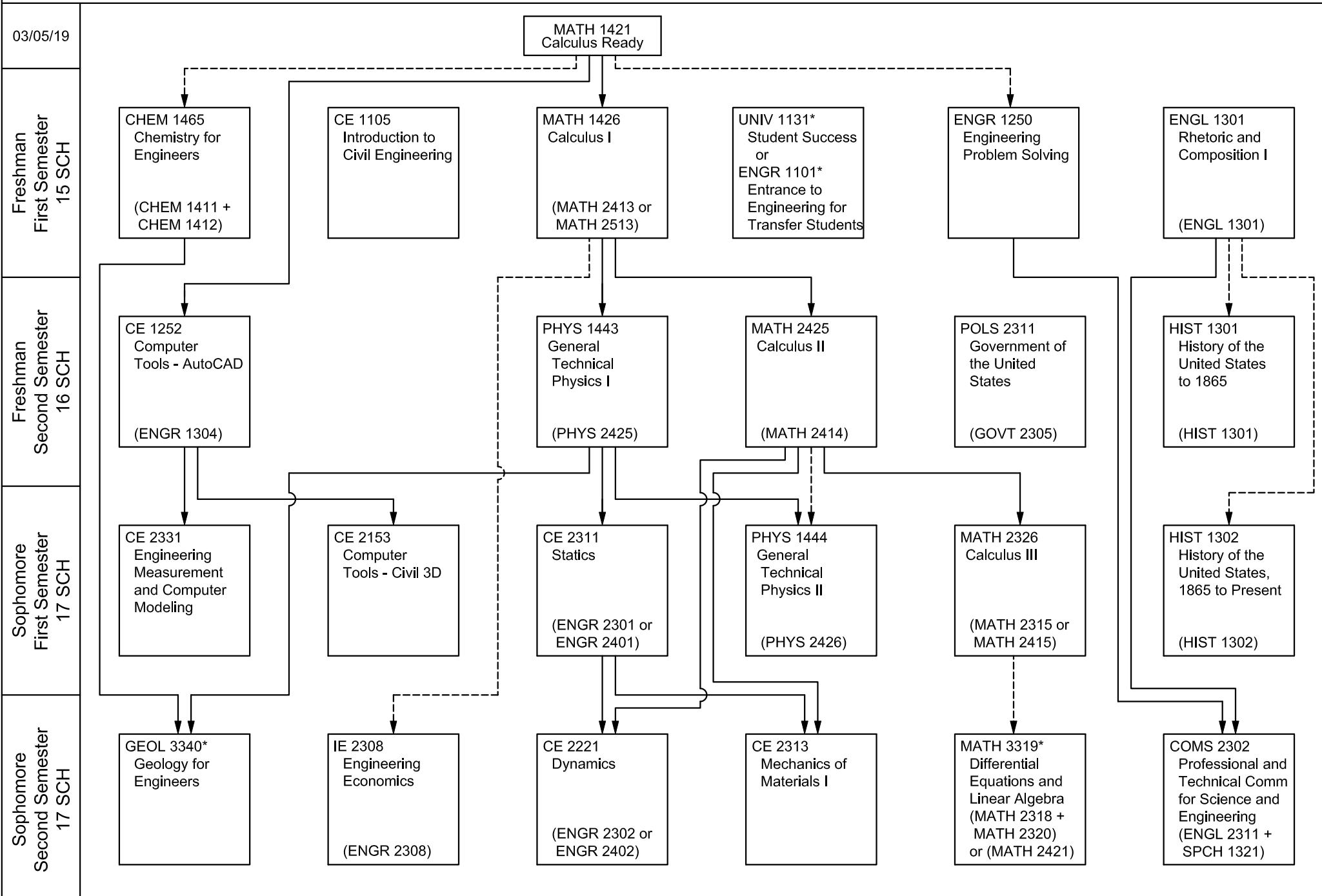




# B. S. Civil Engineering 2019-2020

Prerequisite —————>  
Co-requisite - - - - ->

(ENGL 1301) Equivalent Texas Common Course Number (TCCN)  
CE 3210\* CE Professional Program Course  
UNIV 1131\* Students admitted as Freshmen must take UNIV 1131  
ENGR 1101\* Students admitted as Transfer must take ENGR 1101



# B. S. Civil Engineering 2019-2020

Prerequisite   
Co-requisite 

CE 3210\* CE Professional Program Course

