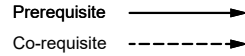
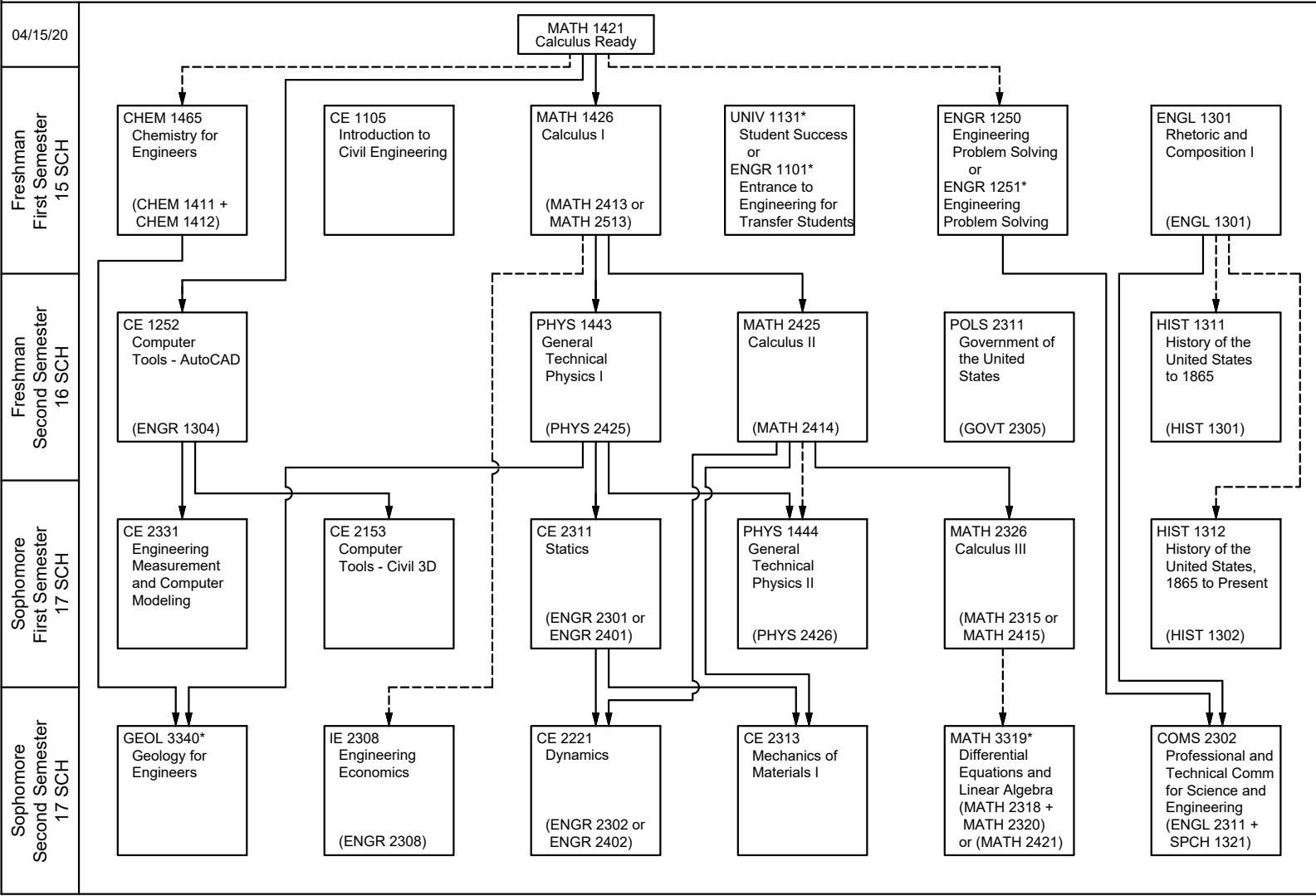


# B. S. Civil Engineering 2020-2021



(ENGL 1301) Equivalent Texas Common Course Number (TCCN)  
 CE 3210\* CE Professional Program Course  
 UNIV 1131\* Students admitted as Freshmen must take UNIV 1131  
 ENGR 1101\* Students admitted as Transfer must take ENGR 1101  
 ENGR 1251\* Students should enroll along with MATH 1421



# B. S. Civil Engineering 2020-2021

Prerequisite ———→  
Co-requisite - - - - -→

CE 3210\* CE Professional Program Course

