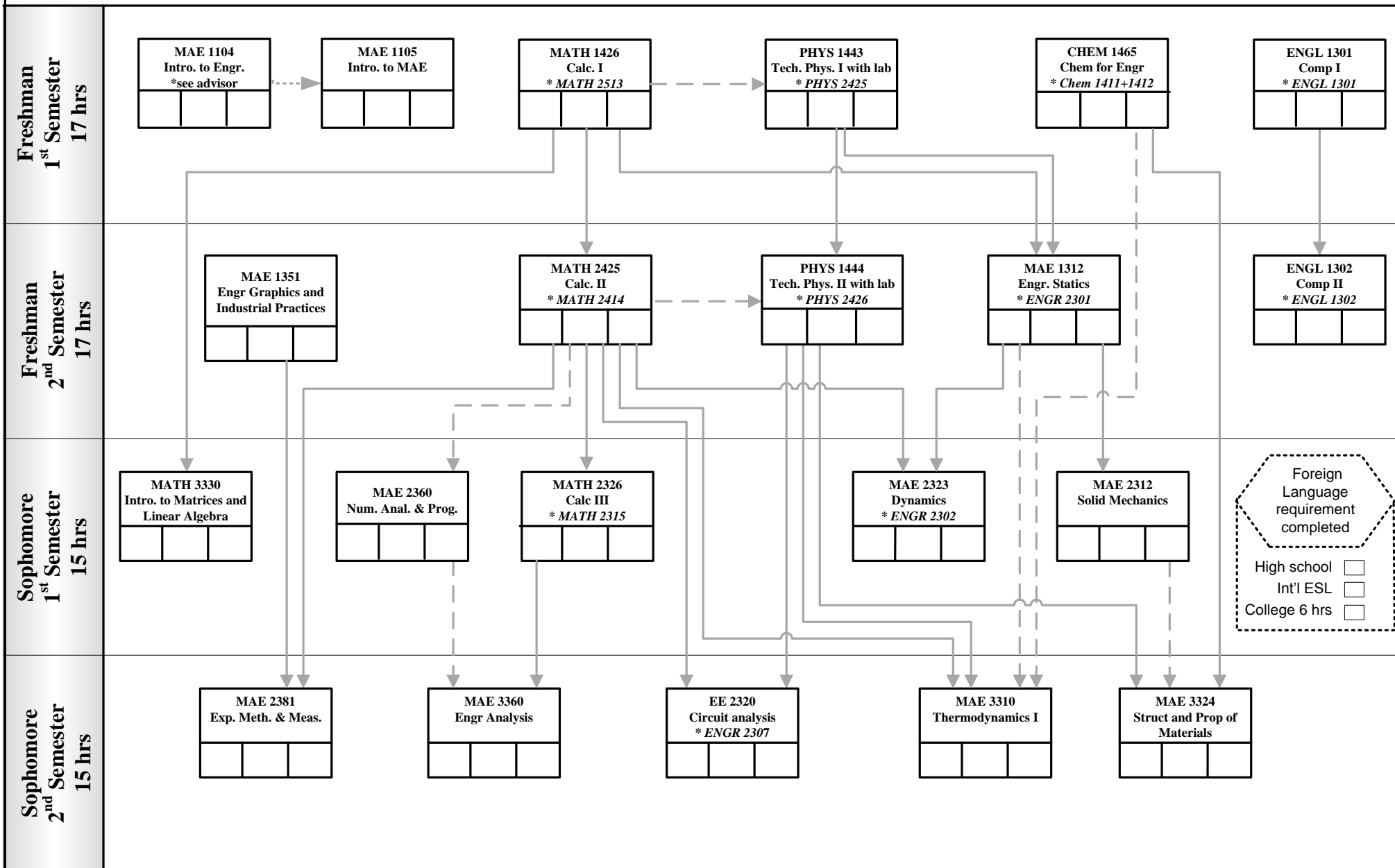


* Texas Common Course Number equivalents and allowed substitutions

Mechanical Engineering - Pre-professional Courses

—————> Prerequisite

-----> Prerequisite or Concurrent Enrollment



2014-2015

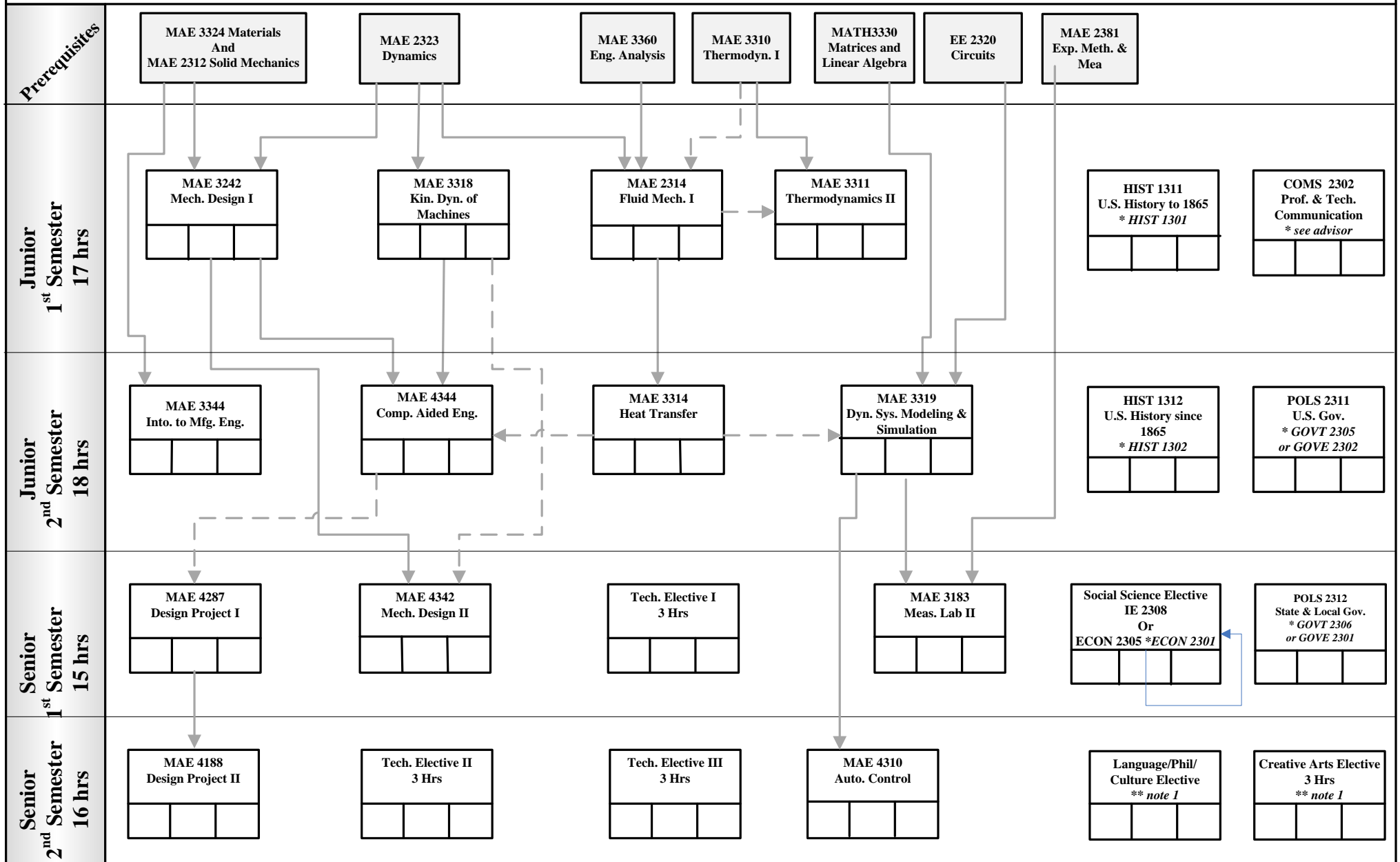
B.S. in Mechanical Engineering

Mechanical Engineering - Professional Courses

* Texas Common Course Number equivalents and allowed substitutions

—————> Prerequisite

- - - - -> Prerequisite or Concurrent Enrollment



** note 1. Any UTA course which satisfies the UTA core curriculum for the Language/Phil/Culture or Creative Arts subject area is accepted for the Fall 2014 ME degree plan. Many have TCCN equivalents. See UTA MAE advisor if needed.