

Fall 2015, Fall 2016

B.S. in Mechanical Engineering Name :

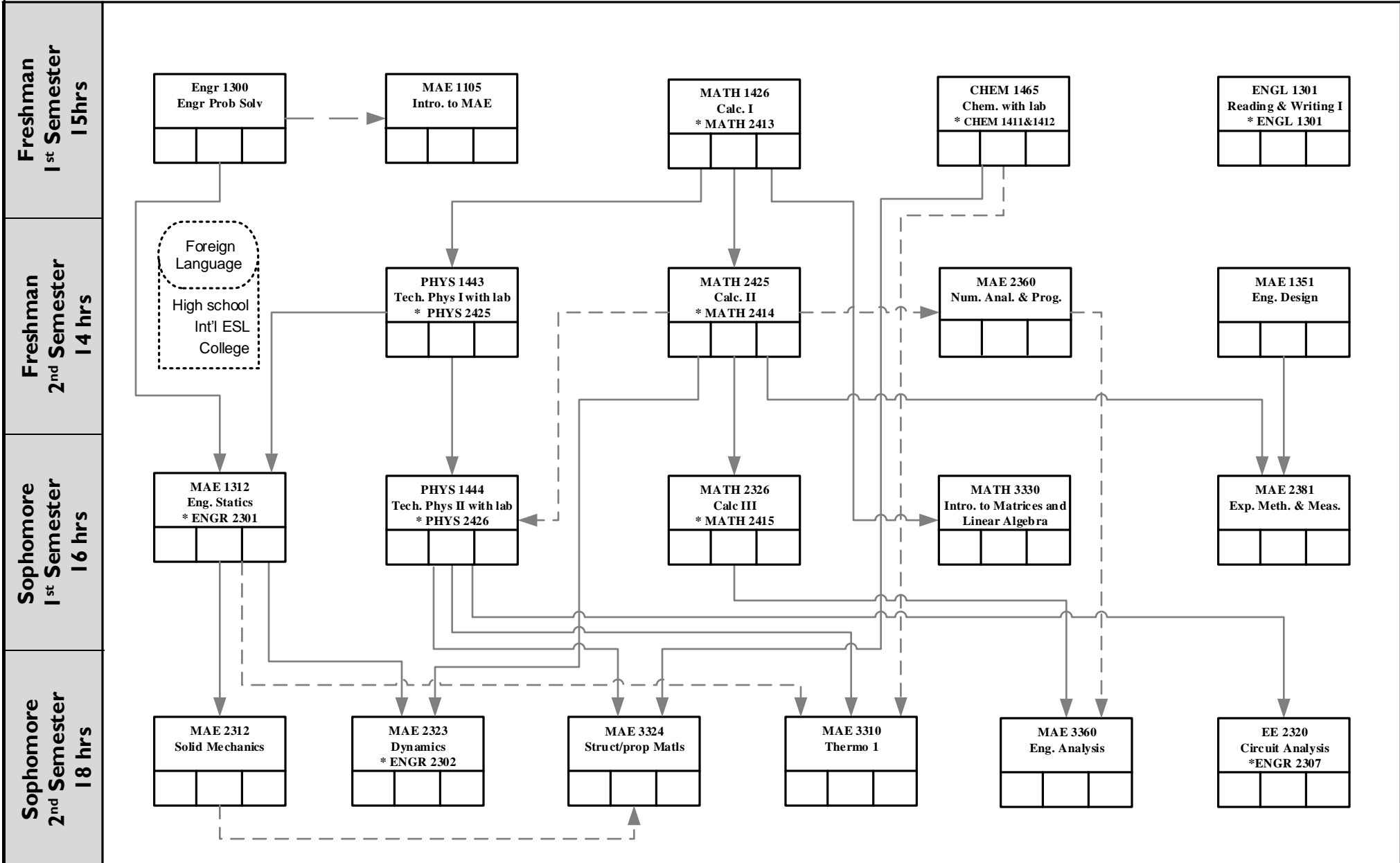
ID : 100 _____

* Texas Common Course Number equivalents and allowed substitutions

Pre-professional Courses

————▶ Prerequisite

- - - - -▶ Prerequisite or Concurrent Enrollment



Fall 2015, Fall 2016

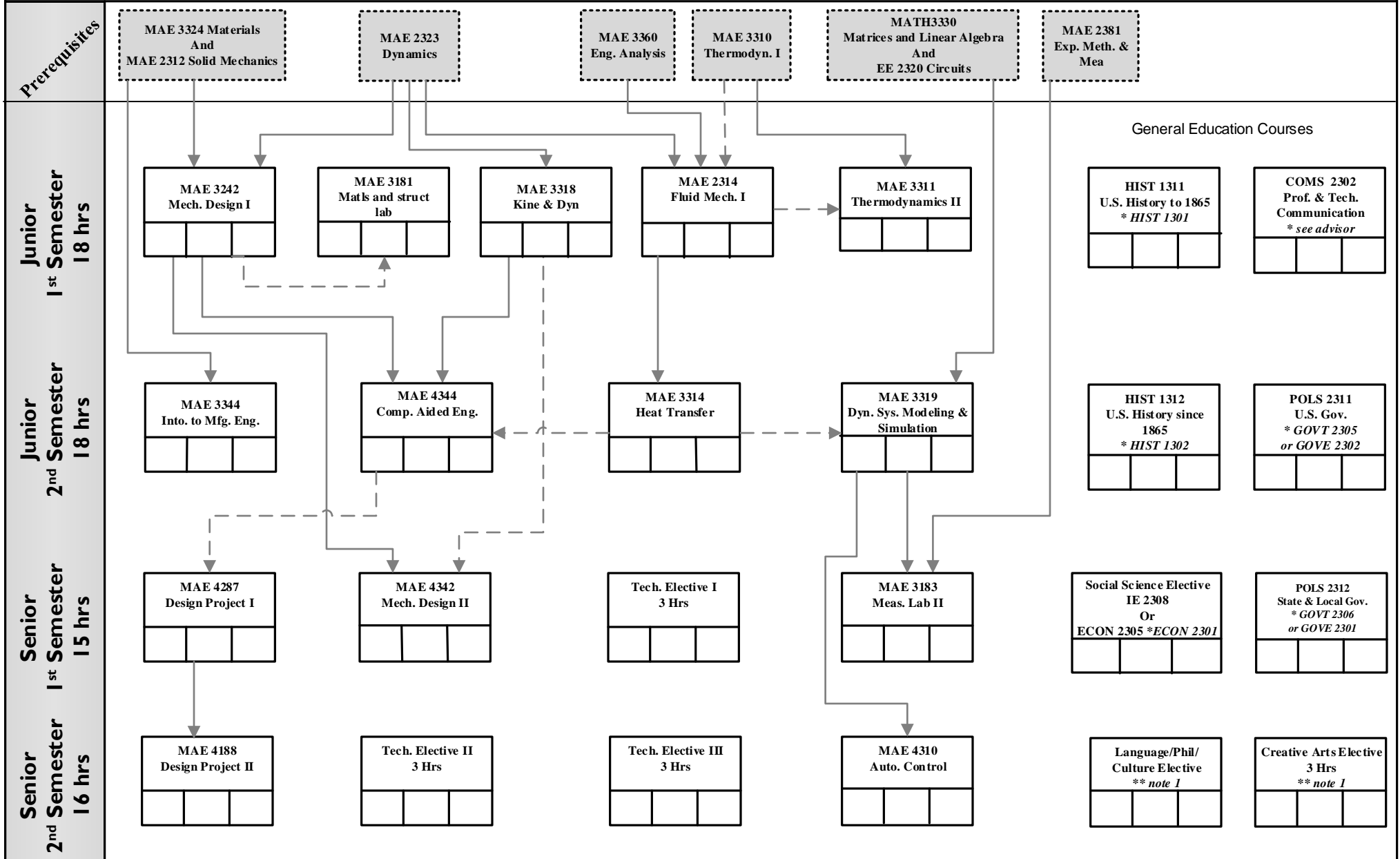
B.S. in Mechanical Engineering

* Texas Common Course Number equivalents and allowed substitutions

Professional Courses

Admission to the professional program required.

—▶ Prerequisite
 - - -▶ Prerequisite or Concurrent Enrollment



** note 1. Any UTA course which satisfies the UTA core curriculum for the Language/Phil/Culture or Creative Arts subject area is accepted for the Fall 2015 and 2016 ME degree plans. Many have TCCN equivalents. See UTA MAE advisor if needed.