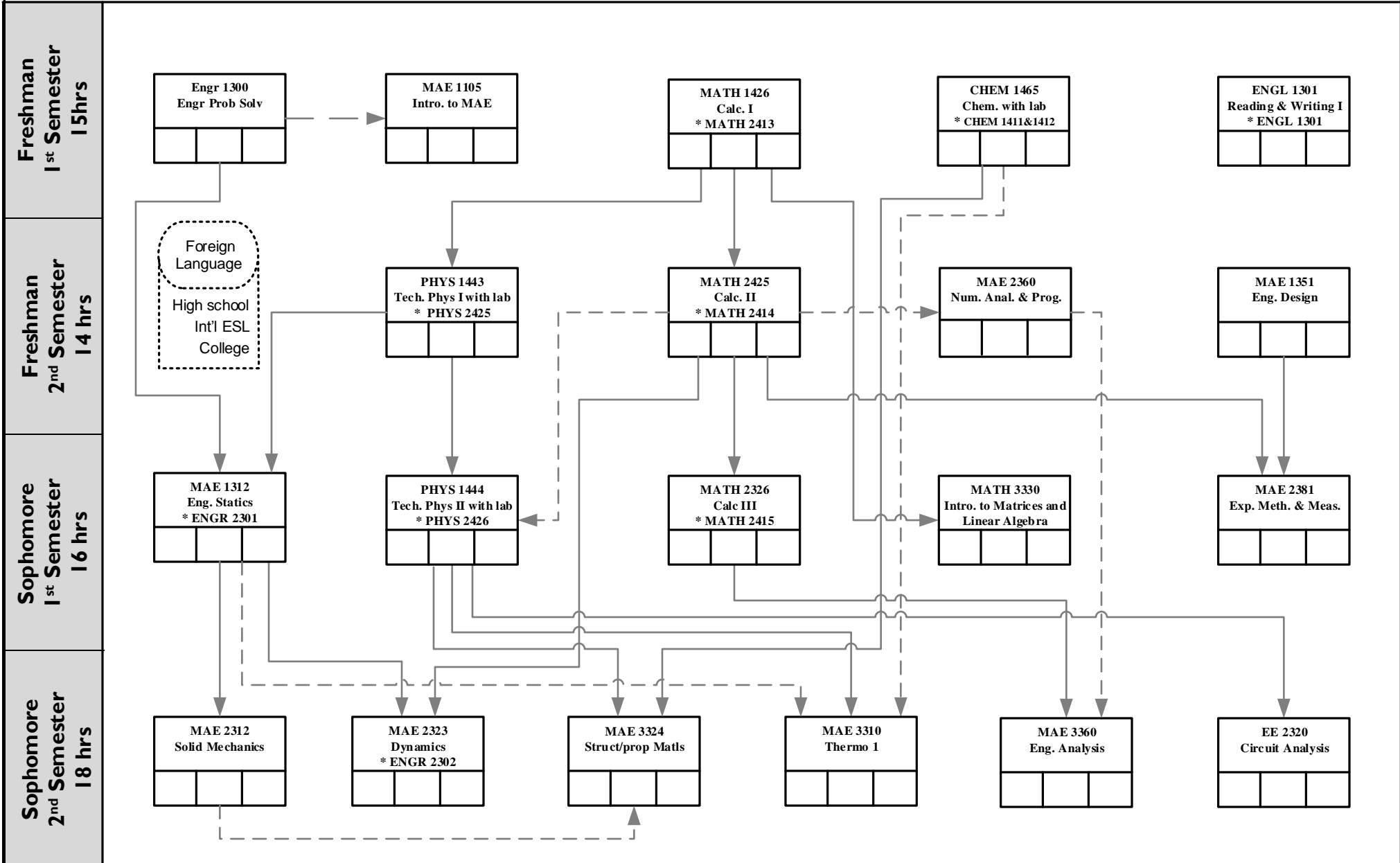


* Texas Common Course Number equivalents
and allowed substitutions

Pre-professional Courses

————▶ Prerequisite

- - - -▶ Prerequisite or Concurrent Enrollment



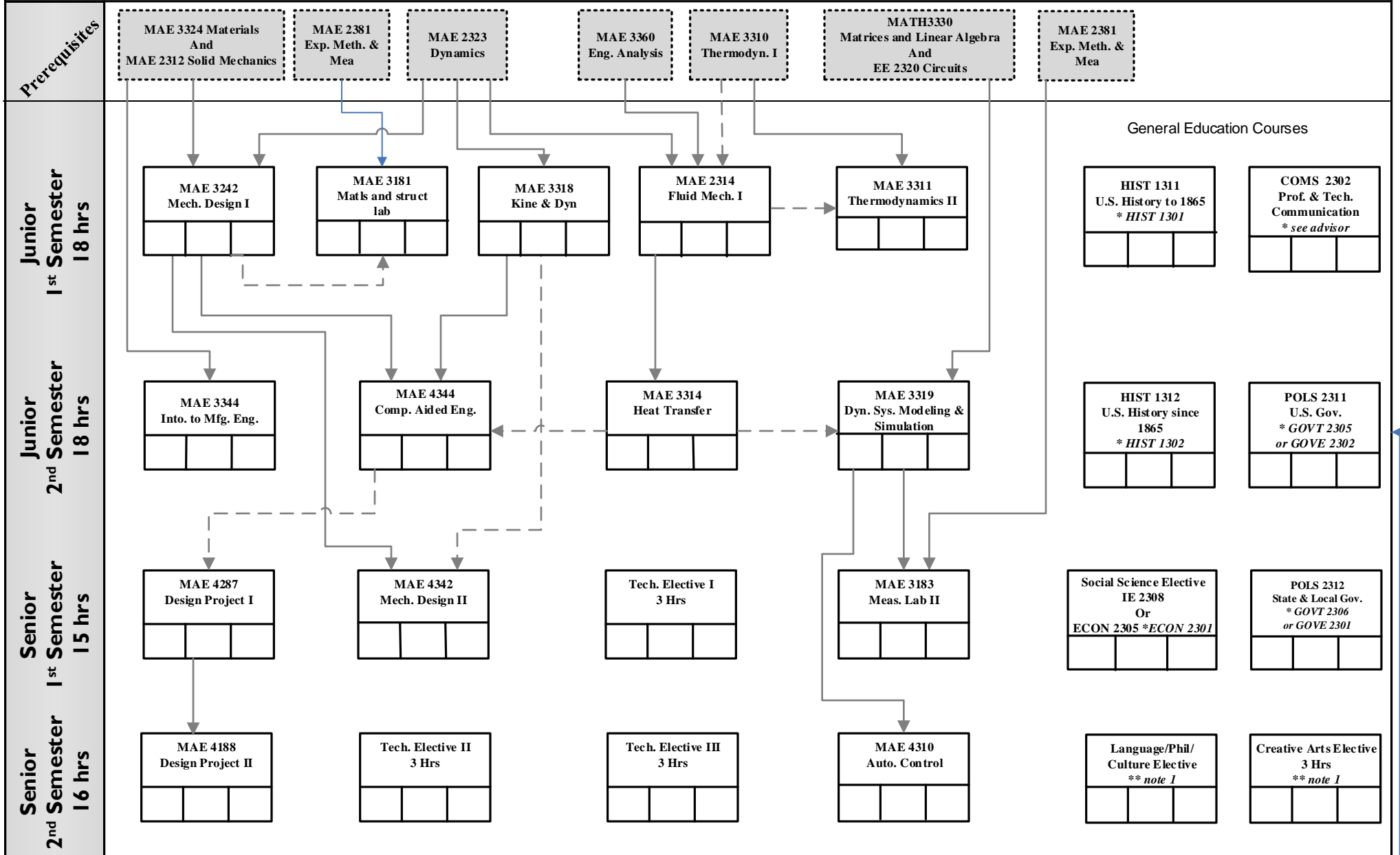
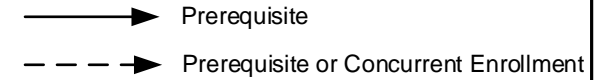
Catalog: Fall 2015 -
Fall 2017

B.S. in Mechanical Engineering

* Texas Common Course Number equivalents and allowed substitutions

Professional Courses

Admission to the professional program required.



** note 1. Any UTA course which satisfies the UTA core curriculum for the Language/Phil/Culture or Creative Arts subject area is accepted for the Fall 2015 and 2016 ME degree plans. Many have TCCN equivalents. See UTA MAE advisor if needed.