

WELCOME NEW FACULTY

..... FALL 2020



BOLD SOLUTIONS | **GLOBAL IMPACT**

UNIVERSITY OF TEXAS  ARLINGTON

A MESSAGE FROM THE INTERIM PRESIDENT



Dear Colleagues:

As one of this nation's foremost public research universities, The University of Texas at Arlington is home to an incredible group of thinkers, inventors, creators, and influencers. As you join the ranks of your outstanding colleagues, I ask you to keep this in mind: Each of you has an incredible capacity to change the lives of your students and impact the world—use it.

Every day, set out with the goal of making our world a better place. Whether it's by educating the minds and hearts of your students, passing on your knowledge, advancing your scholarly research, or producing new creative works of art, you have a critical role to play in the progress of our community and the world.

I know that each of you will enhance our University with your own unique contributions.

Let me know if I can be of service to you. Welcome to The University of Texas at Arlington!

Sincerely,

A handwritten signature in black ink, appearing to read "Teik Lim".

Teik C. Lim, Ph.D.
Interim President

A MESSAGE FROM THE INTERIM PROVOST AND VICE PRESIDENT FOR ACADEMIC AFFAIRS



I am pleased to welcome you to The University of Texas at Arlington! You have become part of a university with a strong commitment to diversity, respect, inclusion, and learning.

Please know that we are invested in your success and look forward to the many ways in which you will enhance the academic learning and discovery environment at UTA.

We strive to uphold the highest standards of academic achievement at UTA, so we offer a great many resources, programs, and opportunities to our faculty. As you become productive and successful scholars at your new academic home, please take advantage of all that UTA offers, from networking to interdisciplinary interactions to collaborations with colleagues from across campus.

Best wishes for a smooth transition to UTA, and thank you for joining us!

A handwritten signature in black ink, appearing to read "Pranesh B. Aswath".

Pranesh B. Aswath, Ph.D.
Interim Provost and Vice President for Academic Affairs

FOUR GUIDING THEMES

The *Strategic Plan 2025: Bold Solutions | Global Impact* is driven by four overarching themes that guide UTA on a path to unprecedented excellence.



HEALTH AND THE HUMAN CONDITION

UTA focuses on health and the human condition through an understanding of complex interactions. We explore health management within physical, mental, emotional, and social contexts. Health innovations will be distinguished by diagnostic, prognostic, and technological advancements. We will explore the effects of transformations in cultural expression, social networks, and the material world on the human condition. Together the focus will help people live healthier and happier lives.



SUSTAINABLE URBAN COMMUNITIES

UTA fosters interrelationships between natural, built, economic, cultural, and social environments on community sustainability and works with community partners to implement ideas to improve livability of cities, the Metroplex, the state, and beyond. Learning from the past and present to ensure a sustainable future, UTA will understand and interpret demographic change and the broad spectrum of human capital. We will strengthen inter-connectedness between individuals and the community by fostering an appreciation for the varieties of human experience, and through the creation of a vibrant creative and cultural ethos.



GLOBAL ENVIRONMENTAL IMPACT

UTA addresses critical issues that affect our planet, including climate change, energy, water, disasters, and pollution. By analyzing global population dynamics, we will develop an understanding of our world—and solutions for its challenges through a range of avenues across disciplines.

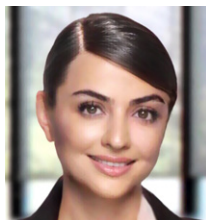


DATA-DRIVEN DISCOVERY

UTA focuses on interdisciplinary research that integrates big data from multiple fields to advance data science and analytics, enabling new discoveries, propelling research, and developing new technologies of benefit to society. We use data to discover and share new knowledge, as well as enhance the understanding of existing information.

COLLEGE OF ARCHITECTURE, PLANNING, AND PUBLIC AFFAIRS

ADRIAN PARR, DEAN



Narjes Abbasabadi

Assistant Professor,
School of Architecture

Ph.D. Architecture, Illinois Institute of Technology, 2019

M.Arch., Azad University, 2012

B.S. Architecture, Azad University, 2008

Prior to joining UTA, Dr. Abbasabadi taught at the Illinois Institute of Technology (IIT) and practiced as an architect at AS+GG, where she was involved in major sustainable projects. In 2018, she organized the 3rd IIT International Symposium on Buildings, Cities, and Performance. She serves as the editor of the third issue of *Prometheus Journal* and is on the editorial board of *Frontiers in Sustainable Cities*. Abbasabadi has received several prestigious awards, including 2020 ARCC Dissertation Award Honorable Mention and 2019 Best Ph.D. Program Dissertation Award.

RESEARCH INTERESTS: Sustainable and smart built environments, human health and environmental quality, urban computing and ambient intelligence, urban building energy and performance modeling



Dennis Chiessa

Assistant Professor,
School of Architecture

M.Arch., UT Arlington, 2009

B.S. Architecture, UT Arlington, 2007

Chiessa's work has been exhibited in several venues, including Enlaces in Dallas, Perspectivas in Austin, the Fort Worth Community Arts Center, and the Architecture 500 Biennial in the Amarillo Museum of Art. As a member of Dennehy Architects, his work received several awards, such as first place in the Tandy Hills Pavilion Design Competition, a studio award from American Institute of Architects (AIA)–Fort Worth for a prototype infill house, the 2017 AIA Fort Worth Community Award, and more. In 2018, he was selected to be a Blueprint for Better Communities Champion, an initiative that seeks to expand the number of AIA members engaged in their communities.

RESEARCH INTERESTS: The effects of development and growth on disadvantaged communities; equity, diversity, and inclusion within the architecture profession



Oswald Jenewein

Assistant Professor,
School of Architecture

M.Arch., University of Innsbruck, 2015

B.S. Architecture, University of Innsbruck, 2011

Jenewein is an architectural designer, educator, and researcher working on the convergence of architecture and design of built landscapes, geopolitical territories, and spatial regimes in the context of ecological environments. He is an assistant professor in architecture for ecological environments and digital design at UTA, where he also founded and directs FUELED, the Future Environments Lab For Ecological Design. Over the past years, Jenewein won several research grants and exhibited in different venues in the United States and Europe, including the Venice Biennale.

RESEARCH INTERESTS: Digital design, geopolitical territories, spatial regimes, post-oil environments



Hannah Lebovits

Assistant Professor,
Public Affairs Program

Ph.D. Urban Affairs & Public Administration,
Cleveland State University, 2020 (expected)
M.P.A., Cleveland State University, 2015
B.A. Political Science & Government,
Touro College, 2014

Lebovits is interested in determining how local governments can produce social sustainability. She focuses on three elements of this pillar—access, acquisition, and attachment/accountability—and looks for ties between these and institutional efforts focused on urban design, the unique needs of different demographic groups, and the value of dissenting voices. She also researches human-centered sustainability issues related to urban and metropolitan governance. An accomplished journalist and former candidate for City Council for University Heights in Ohio, Lebovits is actively engaged in public policy efforts addressing social inequities.

RESEARCH INTERESTS: Local governance and social sustainability, suburban governance, social equity, social justice, subnational governance



Julia Lindgren

Assistant Professor,
School of Architecture

M.Arch., University of Washington, 2010
B.A. Architecture, Lehigh University, 2006

Lindgren has extensive experience working in community-engaged design and planning. Her architectural work is guided by the belief that impactful design can shift power and cultivate community. She has led a wide range of initiatives in Texas and New York including design-build and participatory home design programs, disaster recovery housing, code enforcement reform, community facility development, and anchor institution planning efforts.

RESEARCH INTERESTS: Design-build, social impact design, community engagement



Barbara Marini

Associate Professor
and Director, Interior
Design Program

Ph.D. Educational Leadership, Eastern Michigan
University, 2017
M.S. Interior Design, Eastern Michigan
University, 1998
B.A. Interior Design, Michigan State University, 1976

Dr. Marini is passionate about interdisciplinary work and the integration of theory and practice as they relate to well-designed interiors and business strategies. She is a consultant to architectural firms, developers, and clients on issues that influence interior space. Marini is the past national president of the American Society of Interior Designers and has led accreditation initiatives at several institutions. A seasoned professional interior designer, professor, and industry leader, she believes that design is human-centric and every element of a space shapes the user's ability to interact with it and others.

RESEARCH INTERESTS: Leadership and creativity studies, design impact, environmental and sustainability issues, interdisciplinary education, policy and strategic planning



Evan Mistur

Assistant Professor,
Public Affairs Program

Ph.D. Public Policy, Georgia Tech, 2020
B.S. Philosophy & Communications, Rensselaer
Polytechnic Institute, 2013

Dr. Mistur's current research is on environmental conservation policy, focusing on normative sustainability, stakeholder involvement, and democratic collaboration. Prior to graduate school, he studied ethics, existentialism, and literature and worked abroad as an English Teacher in Huzhou, China.

RESEARCH INTERESTS: Environmental conservation policy, organizational theory, collaborative governance, adaptive management, bottom-up sustainability initiatives



Emily Nwakpuda

Assistant Professor, Public
Affairs Program

Ph.D. Public Policy, University of North Carolina–
Chapel Hill, 2020
M.P.A., North Carolina State University, 2013
B.S. Chemistry, North Carolina Central
University, 2008

Dr. Nwakpuda is affiliated with Kenan-Flagler Business School at UNC Chapel Hill as a member of the Frank Hawkins Kenan Institute of Private Enterprise's Economic Development Research Center. She's focused on the economics of science and innovation, policy analysis, nonprofits, philanthropy, economic development, and entrepreneurship. She is interested in expanding the theoretical concepts that underpin the supply of public goods to support the knowledge and innovation pipeline. She is a former Peace Corps member and earned a National Science Foundation Doctoral Dissertation Award (2017-19).

RESEARCH INTERESTS: Philanthropic investment in science R&D; economics of science and innovation, entrepreneurship, and the innovation pipeline



**Ariadna I.
Reyes-Sánchez**

Assistant Professor, Public
Affairs and Planning Program

Ph.D. Planning, UT Austin, 2018
M.S. Civil Engineering, Instituto Polytecnico
Nacional, 2010
B.S. Civil Engineering, Instituto Polytecnico
Nacional, 2008

Before this position, Dr. Reyes-Sánchez served as a research associate and lecturer at the University of Pennsylvania Weitzman School of Design and postdoctoral fellow in the Global Shifts Program at Penn's Perry World House. As a doctoral student, she was the recipient of Fulbright and Conacyt fellowships. She recently published an article in the *Journal of Planning and Education Research*. The Mexican Environmental Ministry recognized her master's degree thesis because she developed the first inventory of greenhouse gases in university facilities in Mexico.

RESEARCH INTERESTS: Urban informality, environmental planning, climate justice, sustainable housing and transportation, Latin America, Global South

COLLEGE OF BUSINESS

HARRY DOMBROSKI, DEAN



David Arena

Assistant Professor,
Department of Management

Ph.D. Management, University of Memphis, 2020
B.A. Psychology, George Mason University, 2015

Dr. Arena's primary area of research lies in workplace diversity and inclusion. His research aims to better understand stigmatized employees and those who identify with dynamically stigmatized identity characteristics that may change over time or be actively concealed. His research interests also include identity management and mistreatment at work.

RESEARCH INTERESTS: Industrial psychology, human resource development, stigma, LGBTQ



Hila Fogel-Yaari

Assistant Professor,
Department of Accounting

Ph.D. Accounting, University of Toronto, 2016
M.S. Management Sciences–Finance & Accounting,
Tel-Aviv University, 2010
M.S. Applied Mathematics for Finance (Financial Engineering), Baruch College, 2006

Dr. Fogel-Yaari joins UT Arlington after teaching at Tulane University. Her research focuses on corporate disclosure quality and innovation. She studies different aspects of innovation—corporate innovation, textual emphasis of innovation, and employee innovation—and different aspects of disclosure. Fogel-Yaari's work has been published in peer-reviewed academic journals, including *Auditing: Journal of Practice and Theory* and the *Journal of Accounting and Public Policy*. She also holds a law degree from Tel Aviv University.

RESEARCH INTERESTS: Financial disclosure quality (both accrual-based and textual), the relation between corporate disclosure and innovation, auditor quality, auditor influence on the corporate disclosure



Yuan Ji

Assistant Professor,
Department of Accounting

Ph.D. Business Administration, George Washington University, 2016
M.A. Accounting, University of Melbourne, 2010
B.S. Accounting, Nankai University, 2007

Dr. Ji joins UTA from Montana State University, where she conducted research on relevance and reliability of employee business outlook. She is also interested in the role of specialized auditors in strategic alliances.

RESEARCH INTERESTS: Financial accounting, governmental accounting, accounting quality



Tatia Jordan

Clinical Assistant Professor,
Department of Marketing

Ph.D. English, Florida State University, 2009
M.A. English, Georgia State University, 2004
B.S. Marketing, Oral Roberts University, 2000

Dr. Jordan is passionate about teaching business communication and has actively engaged in introducing a number of innovations to 40-plus classes that she helps to coordinate for the College of Business. These innovations include mock interviews, résumé workshops, Foliotek, and Acclaim professionalism badges. She also participated on the team that on-boarded VMOCK for résumé preparation for both graduates and undergraduates. She received the Best Paper Award at the 2017 Academy of Business Research Conference, was recognized for her service to veterans at UTA in 2019, and earned the 2019 UTA Community and Professional Faculty Leadership Award.



Ruochen Liao

Assistant Professor,
Department of Information
Systems and Operations
Management

Ph.D. Management Science & Systems, State
University of New York–Buffalo, 2020
M.A. Medieval History, University of Leeds, 2009
B.A. English, South China University of
Technology, 2007

Prior to earning his Ph.D., Dr. Liao worked as a journalist for China Central Television from 2011 to 2014. This unique experience has shaped his interest in the social dynamics of online communities. His main research interests include health care, social media, text analytics, and social network analysis.

RESEARCH INTERESTS: Health care IT, online health communities, natural language processing, text analytics, social network analytics



Martin Monroe

Senior Lecturer,
Department of Management

Ph.D. Business Administration/Management, Texas
A&M University, 1987
M.B.A., Syracuse, 1980
M.S. Biotechnology, University of Pennsylvania, 2002

Dr. Monroe's research includes addressing longitudinal process models of multiple identity development, achieving improvement in the peer review process, and ecosystem resources in scholarly publishing. He also brings experience in working with entrepreneurs and inventors, looking into novel proprietary biosynthetic technologies.

RESEARCH INTERESTS: Peer review process, development of strategy cases for teaching, establishing competitive advantage



Pyayt P. Oo

Assistant Professor,
Department of Management

Ph.D. Business Administration, Washington State University, 2017

B.S. Computing & Information Systems, London Metropolitan University, 2007

Dr. Oo's research centers on entrepreneurial resource acquisition and innovation. His research examines how entrepreneurs' verbal and nonverbal behaviors and their origins of innovation influence investment decisions in crowdfunding and other novel means of resource acquisition. His work has appeared in the *Journal of Business Venturing* and other outlets. Before his appointment at UTA, Oo was an assistant professor of entrepreneurship at Central Michigan University.



Owen Parker

Assistant Professor,
Department of Management

Ph.D. Business Management, Indiana University, 2015
M.Phil. Development Studies, Cambridge University, 2010

M.S.W., University of Southern Mississippi, 2009
B.S.W., University of Southern Mississippi, 2008

Dr. Parker joins UTA from the Spears School of Business at Oklahoma State University. His work has been published in the *Academy of Management Journal*, the *Academy of Management Review*, the *Journal of Management*, and the *Best Paper Proceedings of the Academy of Management*. In addition, his work has been presented at the annual meetings of the Academy of Management and the Strategic Management Society, the Oxford University Reputation Symposium, and the Babson College Entrepreneurship Research Conference.

RESEARCH INTERESTS: How the reputations of firms influence their strategic decisions



William Venable

Assistant Professor of
Practice, Department
of Marketing

M.P.A., University of Missouri–Kansas City, 2006
M.B.A., Rockhurst University, 1984
B.S. Journalism, University of Kansas, 1981

Venable's responsibilities include teaching strategic marketing management and business communications. His work in higher education prior to UTA includes more than 15 years teaching courses in marketing, management, and health care administration. In that role he received a national award for teaching excellence from the Accreditation Council for Business Schools and Programs. His professional background includes more than 20 years of experience working with senior leadership teams and corporate partners. He has collaborated on and managed analytical projects for Fortune 500 firms including AT&T and Ford.

RESEARCH INTERESTS: Consumer behavior, branding, database research, using big data to improve access to health care for members of the aging population, exploring the emerging Latino ethnic market

COLLEGE OF EDUCATION

TERESA TABER DOUGHTY, DEAN



Jennifer Bailey

Assistant Professor,
Department of Educational
Leadership and Policy
Studies

Ed.D. Educational Leadership, Stephen F. Austin State University, 2013

M.Ed. Educational Leadership, Stephen F. Austin State University, 2010

B.A. English, UT Tyler, 2004

As a K-12 school administrator for the past eight years, Dr. Bailey served as a campus principal and central office administrator with an expertise in bilingual education and special programs. While serving in a leadership role in public schools, she also taught at Stephen F. Austin University for five years in the principal preparation program. Bailey's dissertation, "Tener Éxito: Stories of Self-Efficacy from Undocumented Latinos in the Pursuit of Higher Education," was recognized as Dissertation of the Year from the Texas Council of Professors of Educational Administration in 2014.

RESEARCH INTERESTS: College-readiness for diverse learners, systems for self-efficacy, social and emotional learning, restorative practices, the principalship



Sonja Ezell

Visiting Assistant Professor,
Department of Curriculum
and Instruction

Ed.D. Curriculum & Instruction, Texas A&M University–Commerce, 2013

M.S. Reading, Texas A&M University–Commerce, 2003

Teacher Certification, Texas Region 12, 1996

B.S.W., University of Mary Hardin-Baylor, 1995

Dr. Ezell brings to UTA more than 15 years of experience in Dallas ISD as a teacher and academic coordinator. She is committed to diversifying literacy education in K-12 and has been recognized with a number of awards for her efforts. Her research is focused on effective reading strategies, the power of classroom librarians, and how to enhance early literacy utilizing technology.

RESEARCH INTERESTS: Early literacy experiences, beginning reading instruction



Melissa Hulings

Assistant Professor,
Department of Curriculum
and Instruction

Ph.D. Education, Oklahoma State–Stillwater, 2013

M.Ed. Secondary Science Education, Northeastern State University, 2008

B.S. Secondary Science Education, Oklahoma State–Stillwater, 2002

Dr. Hulings is committed to access to science and has served as an instructor and curriculum developer for the Bernard Harris Summer Science Camp program since 2015. As a former clinical professor, she earned the College of Education's Award for Excellence in Teaching and has been a semifinalist for the Provost's Award for Excellence in Teaching. She's published work on elementary science teacher preparation and on STEM career awareness in elementary school children.

RESEARCH INTERESTS: Elementary science teachers, science curriculum



Bree Jimenez

Associate Professor,
Department of Curriculum
and Instruction

Ph.D. Special Education, University of North Carolina–Charlotte, 2010
M.Ed. Curriculum & Supervision, University of North Carolina–Charlotte, 2003
B.S. Exceptional Child Education, University of Central Florida, 1999

Dr. Jimenez is a special education research consultant with the Mater Dei Special School in Camden, Australia, and honorary research associate in special education at the University of Sydney. Previously, she was an assistant professor at the University of North Carolina–Greensboro and a classroom teacher of students with moderate-severe intellectual disabilities. She has published several research manuscripts in peer-reviewed journals, multiple book chapters, academic programs, and a book on strategies to support academics for students with severe disabilities.

RESEARCH INTERESTS: Assessment of severe intellectual disabilities, technology and disabilities



Robin Jocius

Associate Professor,
Department of Curriculum
and Instruction

Ph.D. Teaching, Learning, & Diversity, Vanderbilt University, 2015
Teaching Certification, English Education & Reading, University of New Orleans, 2009
B.A. English & Art History, Tulane University

Dr. Jocius joins UTA from The Citadel, where she served as the program coordinator for literacy education. She is completing two National Science Foundation (NSF) awards for which she is co-PI. A third three-year NSF grant on maker activities ended in June 2020. She's served as a site visitor for the Council for the Accreditation of Educator Preparation.

RESEARCH INTERESTS: Integrating maker activities in the classroom, computational thinking and content area classrooms, teachers' pedagogical practices with mobile maker kits



Marilee Bresciani Ludvik

Professor and Department
Chair, Department of
Educational Leadership and
Policy Studies

Ph.D. Administration/Curriculum & Instruction,
University of Nebraska, 1995
M.A. Teaching, Hastings College, 1990
B.A. Music Education, Hastings College, 1987

Dr. Ludvik joins UTA from San Diego State University (SDSU), where she served as a professor of postsecondary educational leadership. Prior to that, she was assistant vice president of institutional assessment at Texas A&M University. Highly committed to student success, Ludvik served on SDSU's Student Learning Outcomes and Programmatic Assessment Committee and on the Student Success Working Group. She is a Faculty Fellow within the Office of Educational Effectiveness, where she assisted in connecting student learning and development outcomes to equity performance indicators.

RESEARCH INTERESTS: Mindfulness and ethnic identity, cultivating students' spirituality and skills employers demand at a public institution, the neuroscience of learning



Paul Polanco

Assistant Professor,
Department of Curriculum
and Instruction

Ph.D. Education, Southern Methodist University, 2019
M.B.A. Corporate Finance, University of Dallas, 2004
B.B.A., Pontificia Universidad Católica Madre y
Maestra, 2003

Dr. Polanco's research focuses on the economic outcomes of bilingualism and biliteracy on Hispanic students in terms of labor market participation, income potential, and career choices. Under his doctoral fellowship, he has worked on the development of an intelligent tutoring system teaching vocabulary in-depth to Hispanic second-graders. He worked for nine years as a bilingual teacher in the Dallas ISD and also works part time for the Galapagos Conservancy in Ecuador, where he delivers in situ effective research-based instructional tools to elementary and middle school teachers.

RESEARCH INTERESTS: The economic outcomes of bilingualism, outcome of bilingual career choices



Ericka Roland

Assistant Professor,
Department of Educational
Leadership and Policy
Studies

Ph.D. Educational Leadership & Policy Studies,
University of South Florida, 2018
M.S. College Student Personnel, University of
Tennessee, 2011
B.S. Education, University of West Florida, 2009

Dr. Roland's research examines critical leadership development in postsecondary educational settings through two interconnected lines of inquiry: the dynamics of dialogical relationships and the lived leadership experiences of historically minoritized persons. Currently, her work focuses on the issues of critical teaching, student leadership, and intersectionality. She teaches courses on higher education history, critical consciousness, epistemologies, popular culture, and student development.

RESEARCH INTERESTS: Critical leadership development, teaching and learning, mentoring, popular culture, graduate experiences, Black women



Deborah Williams

Visiting Assistant Professor,
Department of Curriculum
and Instruction

Ed.D. Curriculum & Instruction, Texas A&M
University–Commerce, 2011
M.A. Reading, Louisiana Tech University, 1985
B.S. Special Education, Grambling State
University, 1981

Dr. Williams brings to UTA more than 30 years of experience as a K-12 teacher and administrator. She served as a reading recovery teacher, special education teacher, assistant and associate principal for Dallas ISD, and a dean of instruction. Her most recent publications focus on exposing pre-service teachers to emergent bilingual students, the use of reflections by teacher candidates, and establishing reliability in field experience and student teaching surveys.

RESEARCH INTERESTS: Pre-service teachers, dual-language learners, field experiences for pre-service teachers

COLLEGE OF ENGINEERING

PETER CROUCH, DEAN



Habib Ahmari

Assistant Professor,
Department of
Civil Engineering

Ph.D. Hydrotechnical Engineering, Queen's University, 2010

M.S. Civil Engineering, Sharif University, 1996

B.S. Civil Engineering, Sharif University, 1990

Dr. Ahmari's research focuses on water resource engineering, environmental hydraulics, and stream geomorphology. He first joined UTA as a senior lecturer in 2015, while also leading several environmental impact assessment studies for four major hydropower projects in Canada. He is a licensed professional engineer in Texas and Ontario, Canada. Ahmari is the author/co-author of 40 publications in peer-reviewed journals and conference proceedings, as well as a book. His research has been funded by the Texas Department of Transportation, Manitoba Hydro, and more. He was the recipient of the 2019 Civil Engineering Department Outstanding Teaching Award.

RESEARCH INTERESTS: Environmental hydraulics, urban water infrastructures, and flood management; urban hydraulics and river restoration; surface water quality and quantity assessment



Juan Balderrama

Assistant Professor of
Instruction, Department of
Civil Engineering

Ph.D. Structural Engineering, University of Florida, 2015

M.E. Structural Engineering, University of Florida, 2009

B.S. Civil & Environmental Engineering, University of Notre Dame, 2007

Dr. Balderrama describes himself as a rare wind/seismic engineering hybrid: a professional structural engineer practicing seismic design focused in the nonlinear structural response, while having an academic background in advanced wind engineering. His focus is on improving the resiliency of communities through structural engineering while achieving infrastructure protection, security, and a balance between function, form, and cost. He has recently been involved in structural engineering and real estate development in Mexico for American and Mexican corporations and is the current chair of Wind and Blast Load Subcommittee for the Building Code Effort in the Greater Area of Guadalajara, Mexico.

RESEARCH INTERESTS: Structural engineering, climatology, hurricane surface winds



Michael Bozlar

Assistant Professor,
Department of Mechanical
and Aerospace Engineering

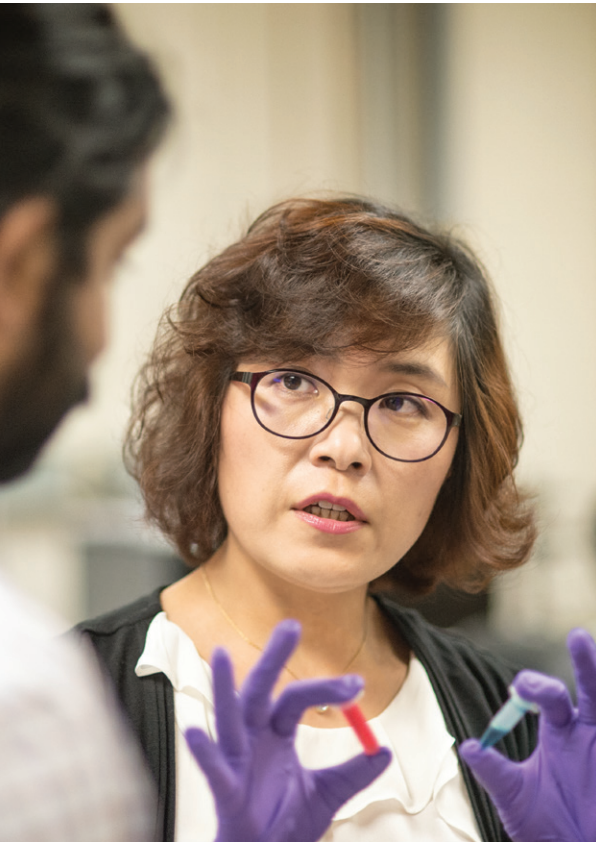
Ph.D. Materials Science & Engineering, Ecole Normale Supérieure-Paris-Saclay, 2009

M.S. Materials Science & Engineering, University of Strasbourg, 2006

B.S. Mechanical Engineering, University of Strasbourg, 2004

Dr. Bozlar comes to UTA from Princeton University, where he was an associate research scholar. His multidisciplinary expertise spans the synthesis, processing, and characterization of organic and inorganic materials, including 2D nanomaterials, polymers, composites, and rechargeable batteries. Bozlar is a member of the American Chemical Society, ACS Polymer Chemistry Division, and the American Institute of Chemical Engineers.

RESEARCH INTERESTS: Nanomaterials synthesis and characterization, polymer composites, additive manufacturing, energy storage, CO₂ capture and chemical conversion, water treatment and harvesting, bioengineering



Paul Davison

Assistant Professor,
Department of Mechanical
and Aerospace Engineering

Ph.D. Mechanical Engineering, University of Michigan, 2013

M.E. Automotive Engineering, University of Michigan, 2009

B.E. Automotive Engineering, University of Madras, 2004

Dr. Davison joins UTA from the University of Michigan, where he served as a research scientist. He was also researcher at General Electric Research Center in Niskayuna, New York. He has extensive industrial experience in the aerospace, wind energy, and automotive sectors.

RESEARCH INTERESTS: Damage, fracture, and fatigue of composite materials; low velocity and high velocity impact of composite materials; materials architecture



Jessica Eisma

Assistant Professor,
Department of Civil
Engineering

Ph.D. Civil Engineering, Purdue University, 2020

M.S. Civil Engineering, Purdue University, 2015

B.S. Civil Engineering, Michigan State University, 2012

Dr. Eisma, a National Science Foundation GRFP fellow, has spent the past few years investigating local and regional environmental responses to small-scale water harvesting structures in sub-Saharan Africa. This research took her to Tanzania for a year, where, as a Fulbright Scholar, she conducted an intensive field study in collaboration with the Nelson Mandela African Institution of Science and Technology. Most recently, Eisma explored errors in citizen science data at Delft University of Technology in the Netherlands.

RESEARCH INTERESTS: Applying novel remote and meteorological sensing techniques to answer hydrologic questions in arid, semi-arid, and/or urban regions; socio-hydrologic issues related to climate change and water stress



Diana Huffaker

Professor and Department
Chair, Department of
Electrical Engineering

Ph.D. Electrical Engineering, UT Austin, 1994
M.S. Material Sciences, UT Austin, 1990

Before joining UTA, Dr. Huffaker served as the science director for the Institute for Compound Semiconductors at Cardiff University. She also held the Welsh Government Sêr Cymru Chair in Advanced Materials and Engineering. Huffaker has co-authored over 350 refereed journal publications with more than 11,000 citations and many invited presentations worldwide. She is a fellow of the Optical Society, IEEE, the National Science and Security Faculty, the Humboldt Society, and the Learned Society of Wales, and is a Photonics Society Distinguished Lecturer. Her research is focused on the integration of nanostructures into useful devices and photonic systems.

RESEARCH INTERESTS: Directed and self-assembled nanostructure, solid-state epitaxy, optoelectronic devices including solar cells and III-V/Si photonics



Mohammad Jahanbakht

Assistant Professor,
Department of Industrial,
Manufacturing, and Systems
Engineering

Ph.D. Engineering & Public Policy, Carnegie Mellon University, 2015
M.S. Electrical Engineering, Stanford University, 2006
B.S. Electrical Engineering, Sharif University, 2004

Dr. Jahanbakht served as assistant professor of strategy and entrepreneurship at Salem State University from 2015-20, where he earned the McNamara Distinguished Teaching Award and a university-wide Distinguished Teaching Award in 2019. He presented his research at leading conferences, including the Academy of Management Schumpeter Society Conference, and published his latest work at a leading management journal, *Organization Science*. His latest publications focus on policy and strategy in the development of mobile telecommunications in Africa.

RESEARCH INTERESTS: Entrepreneurship, disruptive technologies, frontier markets



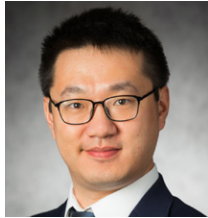
Vinayak Kaushal

Assistant Professor of
Instruction, Department of
Civil Engineering

Ph.D. Civil Engineering, UT Arlington, 2019
M.E. Civil Engineering, UT Arlington, 2017
B.Tech. Civil Engineering, J.N. Govt. Engineering College, 2015

During his past four years working at the Center for Underground Infrastructure Research and Education at UTA, Dr. Kaushal had been actively involved in industry research projects on trenchless pipeline renewal technology. His doctoral dissertation focused on the comparison of environmental and social costs of trenchless cured-in-place pipe renewal method with open-cut pipeline replacement. Kaushal is a member of the cured-in-place pipe subcommittee under American Water Works Association's Pipe Rehabilitation Standard Committee. He is also a reviewer board member of *Infrastructures Journal*.

RESEARCH INTERESTS: Pipeline construction, trenchless technology, environmental impact analysis, underground infrastructure, pipeline asset management



Xin Liu

Assistant Professor,
Department of Industrial,
Manufacturing, and Systems
Engineering

Ph.D. Materials & Structures/Aeronautics & Astronautics, Purdue University, 2020
M.S. Materials & Structures/Aeronautics & Astronautics, Purdue University, 2016
M.S. Civil Engineering, Nanjing Tech University, 2014

Dr. Liu has expertise in computational multiscale modeling of composite materials and structures. He has developed a novel multiscale modeling approach along with machine learning to study various behaviors of textile composite materials and structures. In addition, Liu has developed several software tools for multiscale modeling of composites. He received the American Society for Composites Ph.D. Research Scholarship Award in 2018 and Purdue University Koerner Scholarship in 2017.

RESEARCH INTERESTS: Multiscale constitutive modeling of composites, machine learning, manufacturing simulation, micromechanics and structural mechanics, finite element analysis, smart materials



VP Nguyen

Assistant Professor,
Department of
Civil Engineering

Ph.D. Computer Science, University of Colorado–Boulder, 2018
M.S. Electrical & Computer Engineering, Sungkyunkwan University, 2014
B.S. Electronics & Telecommunications, VNUHCM–University of Science, 2010

Dr. Nguyen's research identifies the opportunities for cyber-physical system-based solutions to monitor and improve human health and living environments. He has been building wearable, mobile, and wireless sensing systems to monitor human breathing volume, brain activities, muscle activities, blood oxygen levels, and more for various health care applications. He has also developed systems to monitor objects in the environment such as drones, cars, and trees. He is the recipient of Best Paper Award at ACM MobiCom 2019 and Best Paper Runner-Up Award at ACM SenSys 2018.

RESEARCH INTERESTS: Cyber-physical systems, smart sensing, mobile health care, mobile and ubiquitous computing, mobile system security



Habeeb Olufowobi

Assistant Professor,
Department of Computer
Science and Engineering

Ph.D. Computer Science, Howard University, 2019
M.S. Electrical Engineering/Computer Systems, California State Polytechnic University–Pomona, 2014
B.S. Computer Science, Fountain University, 2011

Dr. Olufowobi's research focuses on the security of cyber-physical systems. Presently, he's investigating security issues arising out of the growing use of the embedded devices in critical infrastructures that a potential attacker can exploit. He aims to develop mechanisms to address security, trust, and resilience of representative computer applications designed for the Internet of Things (IoT), distributed embedded systems, automotive systems, and related network-connected critical infrastructure.

RESEARCH INTERESTS: Automotive cybersecurity, IoT security, data provenance, machine learning, cloud computing



June Young Park

Assistant Professor,
Department of
Civil Engineering

Ph.D. Civil Engineering, UT Austin, 2020
M.S. Building Performance & Diagnostics, Carnegie-Mellon University, 2016
B.S. Architectural Engineering, Illinois Institute of Technology, 2014
B.S. Architectural Engineering, Hayand University, 2014

Dr. Park's research focus is on smart buildings and cities, specifically reinforcement learning for occupant-centered building controls and advanced data analytics for smart metering data. He has also published work on efforts to determine energy consumption in buildings by using occupancy data, one of the grand challenges in building information modeling. He joins UTA from the Intelligent Environment Lab at UT Austin.

RESEARCH INTERESTS: Occupant-centered building control, occupancy detection and travel estimation using smart technologies, data-driven building performance benchmarking



Niloofer Parsaeifard

Assistant Professor of
Instruction, Department of
Civil Engineering

Ph.D. Environmental Engineering,
UT Arlington, 2019
M.S. Civil Engineering, Tarbiat Modares
University, 2007
B.S. Civil Engineering, Urmia University, 2002

Dr. Parsaeifard has nine years of experience in teaching civil engineering graduate and undergraduate courses as well as conducting research in the areas of structural and environmental engineering. She joined a partnership project with the city of Arlington to explore corrosion in manhole covers.

RESEARCH INTERESTS: Greenhouse gas emission, landfilling, energy from waste, solid waste management, air quality



Allison K. Sullivan

Assistant Professor,
Department of Computer
Science and Engineering

Ph.D. Software Engineering, UT Austin, 2017
M.S. Software Engineering, UT Austin, 2014
B.S. Software Engineering, UT Dallas, 2012

Dr. Sullivan's research interests are in automating software testing practices and applying formal methods to ensure the reliability of complex software systems. Her collaboration with the Naval Research Laboratory focuses on practical concerns of verifying real-world industrial systems. Before joining UTA, Sullivan was an assistant professor at North Carolina State University, where she was selected to be a faculty scholar for the 2019 Grace Hopper Celebration. She was also a member of Google's 2019 Faculty in Residence cohort.

RESEARCH INTERESTS: Automated software engineering, automated bug localization, regression testing, model-based testing, program repair and synthesis, symbolic execution



Yingying Zhu

Assistant Professor,
Department of Computer
Science and Engineering

Ph.D. Computer Science, University of Queensland–
Brisbane, 2014

M.S. Computer Science, University of Electronic
Science & Technology of China, 2009

B.S. Computer Science, Sichuan University–
Chengdu, 2007

Dr. Zhu's interdisciplinary research aims at developing machine learning methods to solve real-world clinical application problems and improve the current health care system workflow. She was a staff scientist working in the Clinical Center at the National Institutes of Health and a postdoctoral fellow at Cornell University and the University of North Carolina–Chapel Hill. Zhu has published many papers in top journals and conferences, including *IEEE Transaction on Medical Imaging*, *Medical Image Analysis*, and *IEEE Transactions on Pattern Analysis and Machine Intelligence*.

RESEARCH INTERESTS: Machine learning, computer vision, medical imaging analysis, bioinformatics



COLLEGE OF LIBERAL ARTS

ELISABETH CAWTHON, DEAN



Nadia Alameddin

Lecturer, Department of
Modern Languages

M.A. Arabic, Middlebury College, 2018
M.A. French Literature, UT Arlington, 2011
B.A. French Language & Literature, St. Joseph
University, 1986

Alameddin has received departmental and university recognition for her excellence in teaching. She's developed classes in both French and Arabic for various topic areas including French theater and intensive Arabic for ROTC.



Olivia Arroyo

Lecturer, Department
of English

M.F.A. English, Chapman University, 2017
B.A. English, St. Lawrence University

Arroyo's commitment to diversity and building the next generation of critical writers has been recognized through fellowships for her undergrad and graduate work, as well as a fully funded University of California–Los Angeles Writing Fellowship in summer 2019. Her teaching engages students with a variety of genres including magic, horror, and comedy with an emphasis on viewing art or reading pieces from POC, women, and the LGBTQI+ community.

RESEARCH INTERESTS: Digital rhetoric, multimodal pedagogy, 21st-century literature, multicultural film and television, comedy from global perspectives, speculative fiction



David Baillargeon

Assistant Professor,
Department of History

Ph.D. History, University of California–
Santa Barbara, 2018
M.A. Modern History, University College
London, 2009
B.A. History, University of Vermont, 2006

Dr. Baillargeon is a specialist in the history of Modern Britain and the British Empire during the modern period. Prior to coming to UTA, he was a European Research Council (ERC) research associate and research fellow at the University of Nottingham, where he worked on the ERC-funded Cultures of Occupation in 20th-Century Asia project. He has been the recipient of numerous fellowships and awards, and his research has been published in the journals *Slavery and Abolition* and *The Journal of Imperial and Commonwealth History*.

RESEARCH INTERESTS: Modern Britain and the British Empire, European history, Southeast Asian history, comparative empires, historical geography, business history, the history of capitalism, political theory



**Jazmin Chinae
Barreto**

Lecturer, Department of
Modern Languages

M.A. Modern Languages, UT Arlington, 2016
B.S. Education, Texas A&M University, 2014

Barreto has presented her work at the Linguistic Association of the Southwest. Her focus is teaching beginning Spanish as well as Spanish for professionals, such as those in law enforcement, social services, education, medicine, business, and communications.

RESEARCH INTERESTS: Recording and analysis of native languages, including the Chicahuaxtla Triqui from Mexico



Kayla Canelo

Assistant Professor,
Department of
Political Science

Ph.D. Political Science, University of California–
Merced, 2019

M.A. Political Science, University of California–
Merced, 2016

M.A. History, California State University–
Stanislaus, 2010

Dr. Canelo's research interests focus on American judicial politics and public opinion. Her research examines the use of amicus curiae briefs at the U.S. Supreme Court, as well as public support for constitutional protections and Supreme Court decisions. Her most recent publications address state coalitions and the success of amicus briefs.

RESEARCH INTERESTS: Judicial politics, public perceptions of law and courts, American politics

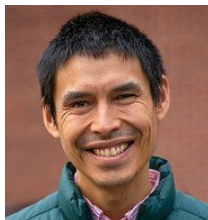


Jesús Carrasco

Lecturer, Department of
Modern Languages

M.A. Spanish, Michigan State University, 1995

Originally from Spain, Carrasco first came to the U.S. in 1992 to earn a master's degree in Spanish literature. He has been teaching Spanish full-time for approximately 25 years, including at Vanderbilt University and Austin College.



**Christopher
Chambers-Ju**

Assistant Professor,
Department of
Political Science

Ph.D. Political Science, University of California–Berkeley, 2017

M.A. Political Science, University of California–Berkeley, 2014

B.A. Political Science, Amherst College, 2004

Dr. Chambers-Ju was a postdoctoral scholar at the Center for Inter-American Policy and Research at Tulane University. He studies how teachers' unions mobilize and influence policy, with a comparative focus on Latin America. His research sheds light on broader dynamics of education policymaking, labor politics, and democratic governance. Chambers-Ju uses multiple research methods and sources of data to tackle research questions, including survey data, interviews, focus groups, and historical archives. His research was supported by a National Academy of Education/Spencer Foundation Fellowship.

RESEARCH INTERESTS: Teachers' political mobilization, worker discontent with political mobilization, comparative politics and field research



Yeon-Mi Choi

Senior Lecturer, Department
of Modern Languages

Ph.D. Library Science, Sungkyunkwan
University, 2000

M.Ed., UT Arlington, 2006

For her commitment to teaching Korean, Dr. Choi has received recognition from the Houston Korean Education Center, the Greater Dallas Korean School, and the National Association of Korean Schools. She is a certified Korean teacher and also worked as a librarian for the National Library in South Korea. She's presented her work on "The Korean Spirits and Philosophy in Archival Culture" to the National Association of Korean Schools.



Fletcher Coleman

Assistant Professor,
Department of
Art + Art History

Ph.D. Art History, Harvard University, 2020

M.A. Chinese Literature, University of Colorado–Boulder, 2013

B.A. Art History & Chinese Literature, Swarthmore
College, 2009

Dr. Coleman is a specialist on the religious arts and art historiography of China. His research spans the medieval through early modern periods. His current project examines the Buddhist stone carvings and antiquarian conventions utilized by scholars in the formation of East Asian art history as an academic discipline in the U.S. circa 1900-1955. His work has been published in journals such as *Ars Orientalis* and *Orientalis*. Prior to arriving at UTA, Coleman was a visiting professor at the University of Notre Dame. He also held doctoral fellowships from the Metropolitan Center for Far Eastern Studies in Kyoto and the China Academy of Art in Hangzhou.

RESEARCH INTERESTS: Arts of Central and East Asia, Silk Road studies, art historiography, Buddhism, Daoism, museum studies, digital humanities



Mónica de la Fuente Iglesias

Assistant Professor of
Spanish, Department of
Modern Languages

Ph.D. Hispanic Linguistics, University of
Minnesota, 2020

M.A. Hispanic Linguistics, University of
Minnesota, 2016

B.A. Translation & Interpreting, University of
Vigo, 2013

Dr. de la Fuente Iglesias' research focuses on issues of language prestige, language attitudes, local and regional identity, sociolinguistics variation, and language contact phenomena in Galicia, Spain. She is also interested in Spanish second language acquisition and has co-authored a proceedings volume about diversity and advocacy in second language teaching and learning. She is a Sworn Translator-Interpreter certified by the Spanish Ministry of Foreign Affairs, European Union and Cooperation, and has worked as a freelance translator. In 2019, she was recognized for her teaching at the University of Minnesota.

RESEARCH INTERESTS: Language contact, phonology/phonetics, variationist sociolinguistics, bilingualism, sociophonetic perception, second language acquisition



Carlos Donjuan

Assistant Professor,
Department of
Art + Art History

M.F.A. Painting, UT San Antonio, 2009

B.F.A. Painting, UT Arlington, 2005

Donjuan often reflects on his upbringing and the consequences associated with illegal immigration. He continues to redefine and contextualize the terms he heard as a youth, with the goal of a visual translation that everyone can relate to. His work is acutely personal, often referencing family and friends in hopes of gaining a better understanding of his fears of not belonging, failure, and even mortality. His new body of work aims to take on the pejorative term "alien" and looks to playfully appropriate its meaning with figures cloaked in sprightly shapes and patterns. He works with the collective Sour Grapes, which includes his two younger brothers and some childhood friends. Donjuan has painted murals, hosted workshops, and mentored at-risk youths through the collective.



Farzaneh Eftekhari

Assistant Professor
of Packaging Design,
Department of
Art + Art History

Ph.D. Design, North Carolina State University, 2019

M.A. Design Studies, Harvard University, 2016

M.S. Design, Arizona State University, 2013

B.A. Industrial Design, Azad University, 2006

At North Carolina State University, Dr. Eftekhari studied the unique intersection of disciplines and the design-thinking process. She explores how design education can facilitate cross-disciplinary practices and support students' integrative learning skills. Aligned with her research at Harvard University, she applied transition design methods and system-level thinking in her design research courses. In her current research, she is exploring the type of skills, space, and methods that design needs for integrated innovation. Branding strategy, human-centered design, and design for behavior change are the other core areas of her expertise.

RESEARCH INTERESTS: Design thinking, transition design, behavior change communication, branding strategy



Frederick Engram

Assistant Professor of Instruction, Department of Criminology and Criminal Justice and Center for African American Studies

Ed.D. Higher Education Administration, Northeastern University, 2019

M.S. Administration of Justice and Security, University of Phoenix, 2009

B.A. Criminology, Johnson Smith University, 2005

Dr. Engram brings a wealth of experience working with graduate students as an advisor and admissions counselor, which provided fodder for his doctoral research on institutional and systemic racism and its impact on African American graduate students enrolled at predominantly white institutions. He has also published work on the impact of whiteness on higher education hiring. He's delivered a number of presentations as an expert in diversity, equity, and inclusion.

RESEARCH INTERESTS: African American graduate students' experiences in predominantly white institutions, diversity hires



J. Austin Eyer

Assistant Professor and Co-Head of BFA Musical Theatre Program, Department of Theatre Arts

M.F.A. Directing, Penn State University, 2020

B.F.A. Theatre, New York University, 2004

Starting his performance career in New York City, Eyer appeared in six Broadway shows. He has been teaching theater for the past 15 years and held the position of assistant teaching professor at Penn State University since 2014. He choreographed two off-Broadway productions, as well as choreographed for the Macy's Thanksgiving Day Parade and the Edinburgh Fringe Festival. Eyer continues to teach around the world with programs like Musiktheater Bavaria in Germany and Showa University in Japan. His book, *Broadway Swings: Covering the Ensemble in Musical Theatre*, was published in 2015 by Bloomsbury/Methuen Drama.

RESEARCH INTERESTS: Queer representation in theater, creating space for queer and questioning students, HIV/AIDS education and prevention, examination of gender normative pedagogy in musical theater training



COLLEGE OF LIBERAL ARTS



Trevor Fuller

Lecturer, Department
of English

Ph.D. English, University of Louisiana–Lafayette, 2020

M.F.A. Creative Writing, Wichita State
University, 2016

B.A. English, University of California–
Los Angeles, 2012

Dr. Fuller has published a number of short stories and is completing a manuscript on *Fear and Loathing in Fiction about Film: Ambivalent Stances on Film in Steve Erickson's Zeroville, Joshua Mattson's A Short Film about Disappointment, and Michael McGriff and J.M. Tyree's Our Secret Life in the Movies*. Committed to engaging with community writers, Fuller has led writing workshops through the Lafayette Public Library and also serves as co-editor-in-chief of the University of Louisiana–Lafayette's literary journal.

RESEARCH INTERESTS: Literary criticism, modern literature, film studies



Courtney Griffiths

Lecturer, Department of
Modern Languages

M.A. Modern Languages, UT Arlington, 2011

B.A. Liberal Arts, French & International Business,
Kalamazoo College, 2009

Griffiths is an experienced French teacher who consistently earns high marks from her students. Her emphasis is on developing strong vocabulary skills among her beginning French students, creating a foundation for them to develop foreign language skills.



Ivy Hauser

Assistant Professor,
Department of Linguistics
and TESOL

Ph.D. Linguistics, University of Massachusetts–
Amherst, 2019

B.A. Linguistics, University of North Carolina–
Chapel Hill, 2012

Dr. Hauser uses laboratory and formal methods to study speech sounds, focusing on how the acoustics of particular speech sounds differ across languages. Her work has been published in *The Journal of the Acoustical Society of America* and *Glossa*. Hauser has won multiple National Science Foundation awards and has also served as a member of the executive committee of the Linguistic Society of America. Her teaching experience includes courses in general linguistics, phonetics, phonology, experimental methods, and speech recognition technology.

RESEARCH INTERESTS: Phonetics, phonology, acoustics, speech production, computational modeling of language



Rachel Herod

Lecturer, Department of
Art + Art History

M.F.A., UT Arlington, 2019

B.F.A., UT Arlington, 2014

Herod has presented her work at curated and group exhibitions, including Studio 76102. She brings experience in artistic design and branding, as well as teaching experience with first-year college students. Her specialty is digital media, including alternative photographic processes.



Amy Hodges

Assistant Professor,
Department of English

Ph.D. English, University of Arkansas, 2012

M.A. English, University of Arkansas, 2007

B.A. English, Louisiana Tech University, 2005

Dr. Hodges taught writing in Qatar before returning to the U.S. to join UT Arlington. Her research focuses on teaching strategies for multilingual engineers, project-based learning for engineers, and negotiating access and diversity in writing centers. She currently serves as the president of the Middle East-North Africa Writing Centers Alliance (2018-2020).

RESEARCH INTERESTS: Multilingual writers, writing program administration, plagiarism and authorship, first-year composition



Jason Hogue

Lecturer, Department
of English

Ph.D. English Literature, UT Arlington, 2019

M.A. English Literature, University of West
Florida, 2012

B.A. English Literature, University of West
Florida, 2009

Dr. Hogue's research focuses on Early Modern/Renaissance literature, Medieval literature, and ecocriticism/eco-theory. He's especially interested in literary representations of forest spaces, the concept of wilderness, and vegetal agency. His work also reflects an interest in outlaw literature, notably the early songs and stories of Robin Hood. He seeks to connect his classroom to the larger community by incorporating service-learning projects in his courses on British and American literature, environmental literature, critical theory, first-year rhetoric/composition, and technical writing.

RESEARCH INTERESTS: Shakespeare, critical animal/plant studies, posthumanism, new materialisms, Robin Hood studies



Fernando Johnson

Senior Lecturer, Department
of Art + Art History

M.F.A., Texas Christian University, 2015
B.F.A. Drawing & Painting, University of
North Texas, 2009

Johnson has been working within DFW's art community for more than 10 years. He has managed multiple industrial projects and has collaborated with local galleries in project installations. His experiences encompass a broad range of fabrication methods ranging from sound installations to metalworking to electrical work.

RESEARCH INTERESTS: Sound as space and experience in relation to a work of art, relationship between object and persons

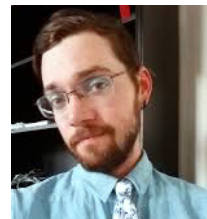


Ketevan Karukhnishvili

Lecturer, Department of
Modern Languages

M.A. Economics & Logistics, Georgian Tech
University, 2009
M.A. German Linguistics, Ivane Javakhishvili State
University of Georgia, 1999
B.A. German Language & Literature, Ivane
Javakhishvili State University of Georgia, 1997

Karukhnishvili has been teaching German for nearly 25 years, both abroad and at UT Arlington. She also works with students seeking to earn credentials in German and is highly ranked by her students.



Daniel Kasper

Lecturer, Department
of English

Ph.D. English, University of Arizona, 2019
M.A. English, University of Alberta, 2013
B.A. English, Southern Arkansas University, 2012

Dr. Kasper's research interests include biopolitics, the Gothic, and the ways in which popular and literary culture shape political reality. He is an editor of a special issue of *Women's Studies* on "Rethinking Shirley Jackson." He received the Patrick Dissertation Fellowship, which allowed him to complete his dissertation, titled *Biopolitics, Female Choice, and First-Wave Feminism: British and American Literature, 1871–1916*.

RESEARCH INTERESTS: Victorian British and American literature, Gothic and genre fiction, gender and women's studies, biopolitics and literature, African American literature, popular culture



James D. Kelsay

Assistant Professor,
Department of Criminology
and Criminal Justice

Ph.D. Criminal Justice & Criminology, University of Cincinnati, 2020 (expected)

M.S. Criminal Justice & Criminology,

UT San Antonio, 2015

B.A. Psychology, St. Edwards University, 2010

Kelsay's specialization in policing and crime prevention has resulted in numerous research projects examining citizen perceptions of police, bias in policing, and the effectiveness of crime prevention tools. His research has also assessed how the physical features of urban space shape crime patterns and how firearms influence behavior. His work has appeared in the *Journal of Quantitative Criminology*, *Journal of Criminal Justice*, *Crime and Delinquency*, *Criminal Justice and Behavior*, and *Violence and Victims*.

RESEARCH INTERESTS: Policing, crime prevention, gun ownership



Andrew Koch

Lecturer, Department
of English

M.F.A. Creative Writing, Eastern Washington University, 2016

B.A. English, University of Tennessee, 2012

Koch serves as managing editor for *Stirring: A Literary Collection*. He is the author of the chapbook *Brick-Woman* (Hermeneutic Chaos Press, 2016). His work has appeared in numerous journals, most recently in *Yemassee*, *Pleiades*, *Salamander*, *The Gettysburg Review*, *Ninth Letter*, *Poetry Northwest*, *Zone 3*, and others. Koch is a recipient of an Academy of American Poets Prize for emerging writers in graduate writing programs for his poem "Inheritance" (2017). He was also nominated for the Pushcart Prize for "Poem in Search of Body" by *The Gettysburg Review* and "What I needed to Say to Texas" by *The Collagist*.

RESEARCH INTERESTS: Poetry, chapbooks, nonfiction



Rachael Mariboho

Lecturer, Department
of English

Ph.D. English, UT Arlington, 2016

M.A. English, UT Arlington, 2007

B.A. English, Southwestern Adventist University, 2004

Dr. Mariboho is interested in exploring 20th- and 21st-century magical realism, U.S. ethnic literatures, rhetoric, and composition, as well as 20th- and 21st-century American literature and British literature. Her work argues that magical realism is a vital narrative mode in the 21st century and underlines how magical realism remains a potent means for representing issues and anxieties in contemporary culture. She's received several awards for teaching and mentorship excellence.

RESEARCH INTERESTS: 20th- and 21st-century magical realism, U.S. ethnic literatures



**Fernando
Melero-García**

Assistant Professor,
Department of Modern
Languages

Ph.D. Hispanic Linguistics, Indiana University, 2020
M.A. Hispanic Linguistics, University of
New Mexico, 2015

B.A. Translation & Interpreting, University of
Granada, 2012

Dr. Melero-García is a researcher and educator with expertise in Hispanic linguistics, translation, and interpreting. His research examines how different linguistic and extralinguistic factors affect the way people produce and perceive speech sounds in Spanish. He is a practicing translator appointed by the Spanish Ministry of Foreign Affairs, European Union and Cooperation. He specializes in the translation of legal and academic documents and has extensive experience providing translation services to American citizens who plan to study, work, or live in Spain.

RESEARCH INTERESTS: Spanish phonetics and phonology, sociolinguistics, second language acquisition, translation, interpreting



Jennifer Miller

Lecturer, Department
of English

Ph.D. Cultural Studies, George Mason University, 2014
M.A. Literary & Cultural Studies, Carnegie Mellon
University, 2006

B.A. English Literature & Women's/Gender Studies,
Montclair State University, 2004

Dr. Miller's work is published in several journals, including *European Journal of American Studies*, *Journal of Homosexuality*, *Fast Capitalism*, and *The Year's Work in Critical and Cultural Theory*. She is currently completing a book manuscript, *The Transformative Potential of Queer Children's Literature*, which is under contract with the University Press of Mississippi.

RESEARCH INTERESTS: Gender, sexuality, children/childhood, subcultures, digital culture



Kaci O'Donnell

Lecturer, Department
of English

Ph.D. English Language & Literature,
UT Arlington, 2018

M.A. English Language & Literature, University of
Louisiana–Monroe, 2012

B.A. English Language & Literature, University of
Louisiana–Monroe, 2007

Dr. O'Donnell's research focus is on medieval and Arthurian literature. She has extensive experience teaching courses in rhetoric and composition, British literature, Arthurian literature, technical writing, and contemporary fiction. Her research interests include issues of chivalry and masculinity in medieval Arthurian literature.

RESEARCH INTERESTS: Arthurian literature—medieval to contemporary



Nathanael O'Reilly

Assistant Professor,
Department of English

Ph.D. English, Western Michigan University, 2008

M.A. English, Western Michigan University, 2004

B.A. Literature, Social & Political Studies, University
of Ballarat, 1995

Dr. O'Reilly is a poet, scholar, and teacher. He was born and raised in Australia but has lived outside the country since 1995 and spent extended periods in England, Ireland, Germany, Ukraine, and the United States. He is the author, editor, and co-editor of 10 books including *(Un)belonging*, *New and Selected Poems of Anna Wickham*, and *Preparations for Departure*, which was named one of the 2017 Books of the Year in *Australian Book Review*. More than 200 of his poems appear in journals and anthologies published in 12 countries. He has given invited readings in Australia, Canada, England, Ireland, Italy, Hungary, and the United States.

RESEARCH INTERESTS: Australian literature,
postcolonial Australia, Australian literature and film





Yana Payusova

Assistant Professor,
Department of
Art + Art History

M.F.A. Interdisciplinary Media Arts Practices,
University of Colorado–Boulder, 2006
B.A. Studio Art, Lake Forest College, 2001
Diploma, St. Petersburg Fine Art Lyceé, 1996

Payusova's paintings and sculptures blend the styles and symbols of Russian icons, folk art, graphic poster art, illustration, and comics, and reflect her cultural heritage and training in traditional Russian realism. Payusova exhibits both nationally and internationally, including recent events at the DeCordova Museum and Sculpture Park, Howard Yezerski Gallery (Boston), Galerie Caprice Horn (Berlin), Rubin Center for the Visual Arts (El Paso), and the Northern Clay Center (Minneapolis). Last year she was a featured speaker at the Anderson Ranch Arts Center and the 2020 California Conference for Advancement of Ceramics Arts.

RESEARCH INTERESTS: Interdisciplinary art, painting, sculpture, illustration, photography, digital practice, ceramics, graphic novels (narrative and sequential art)



James Austin Sandy

Assistant Professor
of Instruction, Department
of History

Ph.D. History, Texas Tech University, 2016
M.A. History, Texas Tech University, 2011
B.A. History, Texas Tech University, 2009

Dr. Sandy is a historian of American military and cultural history and plays an active role within the History Department's Student Success and Internship initiatives. He is an active member of the Society of Military History. He has been published in numerous edited collections and internationally acclaimed journals. His first book, *A War All Our Own*, offers the first scholarly treatment of the American Ranger Tradition from its colonial origins to modern day and will be published in the 2020-21 academic year.

RESEARCH INTERESTS: America's war in Vietnam, the American way of war, special warfare, the representation of warfare in American Cold-War era comics



Sarah Shelton

Senior Lecturer,
Department of English

Ph.D. English, UT Arlington, 2018
M.A. Education, UT Arlington, 2006
B.A. English, UT Austin, 2003

Before coming back to UT Arlington, Dr. Shelton taught high school English in the Mansfield ISD. Her experiences help her better respond to the freshmen she teaches at the University. Using posthumanism, composition studies, rhetorical theory, reading theory, critical theory, and post-qualitative teacher-research, her main research explores strategies for tuning into the posthuman possibility of the college English classroom. She also works extensively in fat studies, popular culture, YA literature, and fantasy and science fiction.

RESEARCH INTERESTS: Fat studies, writing as onto-epistelmology



Eli Shupe

Assistant Professor,
Department of Philosophy
& Humanities

Ph.D. Philosophy, Rutgers University, 2020 (expected)
M.A. Philosophy, Carleton University, 2014
B.A. English Literature & Philosophy, University of
Toronto, 2012

Shupe's research argues that there are stark differences and surprising commonalities between human and nonhuman animal performances of means-end reasoning. She offers a framework to explain this dynamic featuring a minimal understanding of the inferential transitions that underwrite means-end reasoning, as well as a taxonomy of the mental capacities that scaffold its use. The framework she presents outperforms rival accounts in explaining certain results in the psychological literature on insightful animal problem-solving. Her interests are focused on reasoning and problem-solving in humans and non-human animals, as well as issues relating to medical scarcities.

RESEARCH INTERESTS: Philosophy of mind, philosophy of cognitive science, applied ethics



Joul Layne Smith

Lecturer, Department
of English

Ph.D. English, UT Arlington, 2019
M.A. English, Sam Houston State University, 2007
B.A. English, Howard Payne University, 2005

Dr. Smith's pedagogy induces human cooperation through language. A long-time practitioner of his discipline, Smith sees his role as a guide to help students experience the significance of language-produced reality and achieve greatness with it. He engages students through a variety of active learning exercises, peer-reviews, required reading, virtual and real discussions, instructor feedback in written and conference formats, and much more. Each of these strategies guides students to complete substantive, multistep projects that serve as the final products of an enjoyable learning environment.

RESEARCH INTERESTS: Digital humanities, Renaissance literature, biblical literature, rhetoric, composition, popular culture



Colton Strawser

Assistant Professor,
Department of Communication

Ph.D. Leadership Studies, University of San Diego,
2020 (expected)
M.S. Higher Education Administration, Bay Path
University, 2017
M.S. Nonprofit Management & Philanthropy, Bay Path
University, 2017
B.A. Philanthropic Studies, Indiana University, 2015

Strawser's research focuses on community-driven philanthropy, often on the roles community foundations play within the U.S. He conducts research in both higher education administration and nonprofit management, examining how nonprofit organizations benefit from engaging with academic institutions. He holds a Certified Fund Raising Executive designation, is a Certified Nonprofit Professional, and is a master trainer for the Association of Fundraising Professionals.

RESEARCH INTERESTS: Community foundations, participatory grantmaking, community leadership, community engagement in higher education, service-learning pedagogy, nonprofit management, critical nonprofit management studies



**Solymar
Torres-García**

Lecturer, Department of
Modern Languages

Ph.D. Spanish Language & Literature, Arizona State University, 2015

M.A. Spanish, University of Central Florida, 2005

B.A. English Language & Literature, University of Central Florida, 2003

Dr. Torres-García is a bilingual (Spanish) writer, editor, and translator with vast knowledge of Latin American culture and foreign language instruction. Her research includes analyzing the narrative fiction of contemporary women writers from the Spanish-speaking Caribbean. She has presented and published numerous papers about Latin American, Peninsular, and U.S. Latinx literature and film in peer-reviewed journals and international conferences. In addition, she's published award-winning translations of short stories by contemporary Latin American writers. She is currently working on an annotated edition of the experimental novel *Metáfora del cuerpo en fuga*, which will be published by the Modern Humanities Research Association.



Brenna Womer

Lecturer, Department
of English

M.F.A. Creative Writing, Northern Michigan University, 2019

M.A. English, Missouri State University, 2016

B.A. English, Missouri State University, 2014

Womer is an experimental prose writer and poet. Her newest book, *honeypot* (2019), is receiving critical acclaim. She also published *Atypical Cells of Undetermined Significance* in 2018, and her writing has appeared in McSweeney's Internet Tendency, *Indiana Review*, *DIAGRAM*, and elsewhere. Her essay "Wüsthof Silverpoint II 10-Piece Set" was named a Notable of the Year in *The Best American Essays 2017*. She was also a finalist for the Page Prize in nonfiction in 2020 and has been nominated for the Pushcart Prize, Best of the Net, and Best Short Fictions.

RESEARCH INTERESTS: Cross-genre chapbooks, prose, nonfiction



Isabel Zaera

Lecturer, Department of
Modern Languages

M.A. Spanish, University of North Texas, 2016

After working as an elementary teacher in Madrid, Spain, for two years, Zaera taught in Spanish immersion and dual language programs in Fort Worth before completing a master's degree in Spanish. She earned her certification from the Texas Education Agency as a bilingual specialist in Spanish Certification (EC-6).

COLLEGE OF NURSING AND HEALTH INNOVATION

ELIZABETH MERWIN, DEAN



Sharan Allen

Clinical Assistant Professor,
Undergraduate Nursing

M.S. Nursing, Walden University, 2017
B.S. Nursing, Walden University, 2015

Allen received her master's degree in nursing with a specialty in adult gerontology. In 2014 she was inducted into Sigma Theta Tau, an International Honor Society for nurses, and is a member of the American Academy of Nurse Practitioners. She has over 19 years of clinical nursing experience in the critical care area. She has also held positions as a staff nurse (ER/ICU), charge nurse, versant mentor, nurse educator, and unit and house supervisor. She is currently an adult gerontology nurse practitioner for A.L.M.S. Community Health Center.

TEACHING INTEREST: Clinical and didactic professor in critical care of acute and chronically ill patients



Adam Annaccone

Clinical Assistant Professor,
Department of Kinesiology

Ed.D. Administration & Leadership Studies,
Indiana University of Pennsylvania, 2017
M.Ed., Clarion University of Pennsylvania, 2006
B.S. Athletic Training, Duquesne University, 2004

Dr. Annaccone has over 15 years of educational and clinical experience, serving as a board-certified licensed athletic trainer, a corrective exercise specialist, and a performance enhancement specialist. His expertise is in clinical diagnosis of musculoskeletal pathologies, human movement assessment, neuromuscular manual therapy and corrective/performance exercise programs, conflict management/resolution, and leadership in sports medicine. He is an active member of the profession of athletic training, serving on various local, regional, and national athletic training committees.

RESEARCH INTERESTS: Leadership and conflict in sports medicine, clinical diagnosis, health care administration, preventative medicine

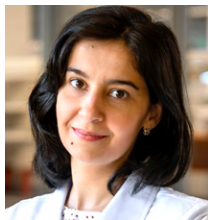


Marion Ball

Professor, Graduate Nursing
and Multi-Interdisciplinary
Center for Health Informatics

Ph.D. Medical Education, Temple University, 1978
M.A. Mathematics, University of Kentucky, 1965

Dr. Ball is the author/editor of over 20 books and 225 articles in the field of health informatics. She is a member of the National Academy of Medicine, serves on the Board of Health on the Net in Geneva, Switzerland, is co-chair of the Healthcare Information and Management Systems Society's (HIMSS) TIGER Committee, and was elected to membership of the IBM Industry Academy. She received the Morris F. Collen Lifetime Achievement Award from the American College of Medical Informatics/American Medical Informatics Association and the Award of Excellence from the International Medical Informatics Association. In 2017, Ball was recognized by HIMSS as one of the Most Influential Women in Health IT and also named as one of the Most Powerful Women in Healthcare IT by Health Data Management.



Claudia Biguetti

Research Associate
Professor, Bone Muscle
Research Center

Ph.D. Applied Dentistry Sciences, University of Sao Paulo, 2018

M.S. Dentistry, University of Sao Paulo, 2014
Certificate on Surgical Dentistry–Odontology,
University of Sacred Heart, 2011

Dr. Biguetti most recently served as a postdoctoral research associate at the Institute of Biosciences at UNESP in Brazil. Her research interests are on bone healing processes, suppression of inflammatory bone loss in periodontitis, and oral bone implants. She engages in multidisciplinary research and has published extensively in the *Journal of Endodontics*, as well as in materials science and engineering outlets.

RESEARCH INTERESTS: Titanium impacts and healing, inflammatory response to physicochemical biomaterials for oral and maxillofacial reconstruction, healing patterns in oral surgery



Valoree Bowen

Clinical Assistant Professor,
Undergraduate Nursing

M.S. Nursing, Ball State University, 2002
B.S. Nursing, UT Arlington, 1991

Bowen has 29 years of nursing experience in a variety of areas including women's services, hospice, and education. She has taught at the L.V.N., A.N.D., and B.S.N. levels and is an avid advocate for students. Most recently she has received her K-12 teaching certificate in health, is an ideal lifevision coach, and is interested in integrative nutrition coaching as well.

RESEARCH INTERESTS: Use of essential oils in health care; educating others to take personal responsibility for their health by utilizing natural solutions to health care when possible





Kathryn Daniel

Associate Dean,
Academic Affairs

Ph.D. Nursing, UT Arlington, 2008
M.S. Nursing, Texas Women's University, 1988
B.S. Nursing, Baylor University, 1978
B.A. Sociology, Baylor University, 1977

Dr. Daniel has been involved in the care of older adults for over 35 years, practicing in geriatric primary care, long-term care, and assisted living facilities. Her research in gerontology includes studies on emerging technologies to enhance safety, cardiac rehabilitation, palliative care, and an analysis of the present and future needs for nurses. Daniel has also led UTA's Smart Care program since 2015. She was inducted into the American Academy of Nursing's 2019 Class of Fellows.



Rael Eckenroed

Clinical Assistant Professor,
Undergraduate Nursing

M.S.N., Walden University, 2017
B.S.N., UT Arlington, 2011
A.D.N., Tarrant County College, 2009

Eckenroed, FNP-C, has nine years of experience as a registered nurse and three years as a family nurse practitioner. As an RN she worked with Texas Health Resources in its progressive care unit, medical/surgical telemetry unit, and Springwood inpatient psychiatric unit. She is interested in research and writing for publication and completed a four-month certificate course in writing for publication through UT Arlington in spring 2020. Eckenroed is a member of American Association of Nurse Practitioners, Texas Nurse Practitioners, and American Nurses Association/Texas Nurses Association.

RESEARCH INTERESTS: Geriatric care, long-term care facilities, COVID-19 and its effect on student learning



Elizabeth Esparza Fuentes

Clinical Assistant Professor,
Graduate Nursing

M.S. Nursing, Texas Woman's University, 1997
B.S.N., UT Arlington, 1990

Fuentes has 33-plus years of experience as a registered nurse and more than 22 years as a family nurse practitioner. As an RN, she has worked at Parkland Health and Hospital System, St. Paul Medical Center, Baylor Home Health, VNA Hospice, and multiple DFW hospitals. As an FNP, she has worked in occupational medicine, geriatric home visits in assisted living facilities and group homes, primary care, and retail health. She is a member of North Texas Nurse Practitioners, Texas Nurse Practitioners, and the American Association of Nurse Practitioners (AANP). She is bilingual in English/Spanish and received the Pioneer for Diversity Award for Faculty Leadership (Texas Woman's University, 2006), AANP State Award for Excellence in Practice (AANP Texas, 2004), and others.

RESEARCH INTERESTS: Health care access across the lifespan, nursing education



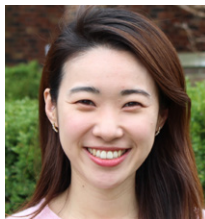
Kristin Hittle Gigli

Assistant Professor,
Graduate Nursing

Ph.D. Nursing, Vanderbilt University, 2017
M.S.N. Pediatric Critical Care Nurse Practitioner,
University of Pennsylvania, 2007
B.S.N., Purdue University, 2003

Dr. Gigli is a health services researcher with expertise in pediatric critical care. Her research examines a broad range of issues related to pediatric hospital care, including the utilization of nurse practitioners in hospital-based care and the influence of health policy on the outcomes of hospitalized children. Prior to joining UT Arlington, she was a postdoctoral scholar at the University of Pittsburgh in the Department of Critical Care Medicine's CRISMA Center, where she conducted pediatric health policy and workforce analyses. She is a practicing acute care pediatric nurse practitioner with a clinical practice in the pediatric intensive care unit.

RESEARCH INTERESTS: Pediatric nurse practitioner workforce, pediatric hospital outcomes, health policy



Yeonwoo Kim

Assistant Professor,
Department of Kinesiology

Ph.D. Social Work, UT Austin, 2018

Dr. Kim is completing her term as a postdoctoral researcher in the School of Kinesiology at the University of Michigan. Her research centers on identifying social determinants associated with health and educational achievement among children, especially from low-income families. Specifically, her research examines the effect of neighborhood context on children's health.

RESEARCH INTERESTS: Health disparities, childhood obesity, neighborhood effects, epidemiology, public health

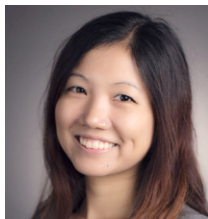


Deborah Lewis

Clinical Assistant Professor,
Undergraduate Nursing

M.S. Nursing, UT Arlington, 2003
B.S. Nursing, Illinois Wesleyan University, 1980

Lewis is a registered nurse in Texas who specializes in critical care nursing. She is a member of Sigma Theta Tau Professional Nursing Association and earned her FNP certification from the American Association of Nurse Practitioners.



Yue Liao

Assistant Professor,
Department of Kinesiology

Ph.D. Health Behavior, University of Southern California, 2015

M.P.H. Biostatistics, UT Health Science Center Houston, 2009

B.S. Health Promotion & Disease Prevention Studies, University of Southern California, 2006

Dr. Liao joins UTA from MD Anderson Center, where she served as a postdoctoral fellow in colorectal cancer prevention. Her training background includes public health, biostatistics, and behavioral science with a focus on real-time data capture methods using wearable sensors and mobile technologies. Liao's research areas include the use of wearable sensors and mobile technologies to (1) assess daily physical activity and sedentary behavior, along with contextual factors, and (2) link daily behavioral patterns with obesity-related cancer risks.

RESEARCH INTERESTS: Wearable, mobile-tech; timely behavioral interventions to reduce cancer risk along the entire cancer continuum



Crystal Ramirez

Clinical Assistant Professor,
Undergraduate Nursing

M.S. Nursing Education, UT Arlington, 2018

B.S. Nursing, UT Arlington, 2015

Ramirez brings more than 13 years of experience in neuro-critical care at Methodist Health Systems. She is also experienced in the stroke management program and has implemented key processes to achieve advanced primary stroke certifications. Committed to fostering excellence in the next generation of nurses, she's developed accredited educational programs for nurse interns and experienced nurses.



John S. Silva

Professor of Research,
Multi-Interdisciplinary Center
for Health Informatics

M.D. Medicine, George Washington University, 1974

B.S. Chemistry, Providence College, 1968

Dr. Silva joins Marion Ball, a member of the National Academy of Medicine, and Gabriela Wilson, who served as chair of the University of Southern Indiana's Health Informatics and Information Management Program, in forming the Multi-Interdisciplinary Center for Health Informatics. A retired Air Force physician (Col) and computer scientist, Silva is a nationally recognized leader in biodefense, emergency response systems, and the development of large-scale health information systems with over 60 publications and books. Most recently, he was the architect of the Department of Defense Threat Reduction Agency's revolutionary, cloud-based biosurveillance system called the Biosurveillance Ecosystem.



Kimberly Siniscalchi
Professor of Practice, Nursing

D.N.P. Executive Leadership, Duke University, 2020
M.S. Nursing, University of Nebraska Medical Center, 1988

B.S. Nursing, Duquesne University, 1979

Maj. Gen. Siniscalchi is a retired Assistant Air Force Surgeon General. In her former role for the Medical Force Development, she established new and appraised existing personnel policy and staffing requirements for over 44,000 active-duty, officer, enlisted, and civilian personnel. Her directorate was responsible for all medical education and training and she created and evaluated nursing policies and programs for 19,000 active-duty, guard, and reserve nursing personnel. She joins UT Arlington from UT Southwestern Medical Center, where she served as vice president of strategic initiatives.

RESEARCH INTERESTS: Strategic analysis, planning, and establishing key partnerships to address health care needs



Regina Urban
Assistant Professor,
Undergraduate Nursing

Ph.D. Nursing, UT Arlington, 2017
M.S. Nursing, Texas Tech University, 2011
B.S. Nursing, Texas Christian University, 1992
M.A. Psychology, Houston Baptist University, 1991
B.S. Psychology, Texas Christian University, 1989

Dr. Urban has been a registered nurse for 20 years, working in the areas of critical care, nursing staff development, and nursing education. Her nursing clinical background includes experience in the emergency department, intensive care unit, and cardiac catheterization/electrophysiology lab. She possesses additional national nursing certifications in critical care nursing, nursing staff development, and nursing education. In addition, she possesses previous degrees in psychology and is licensed as a professional counselor in Texas. In 2017, she was the recipient of the Provost's Award for Excellence in teaching and the College of Nursing and Health Innovation's Teaching Award.

RESEARCH INTERESTS: Nursing education, transition to practice, critical care topics



Gabriela Whitener

Professor, Department of
Kinesiology

D.N.P., Texas Christian University, 2020
M.S.N., Texas Christian University, 2016
M.S. Health Administration, Central Michigan
University, 2000

Dr. Whitener is certified as CCRN and CNL and has been practicing nursing for over 25 years with a very eclectic background: critical care, administration, clinical nurse leader, and academia. She has a passion for bedside nursing, research, and teaching. She has served in a number of leadership roles bridging practice and research, including serving as a Texas Nurses Association DNP Fellow 2020. and was a clinical nurse leader in 2017 for the American College of Nurses.

RESEARCH INTERESTS: Critical care patient outcomes, ICU nursing care quality standards, sepsis management, workplace violence against nurses



Jonné Wilmore

Clinical Assistant Professor,
Undergraduate Nursing

Postmaster's Certificate, Acute Care Pediatric Nurse
Practitioner, UT El Paso, 2015
M.S.N. Family Nurse Practitioner, UT Health Science
Center Houston, 2013
B.S. Nursing, UT Medical Branch Galveston, 2009
B.A. Psychology, University of North Texas, 2000

Wilmore earned her certification as a pediatric nurse, as well as certification from the American Academy of Nurse Practitioners. She's served as a pediatric nurse practitioner at several children's hospitals in Texas and has presented her work at several conferences on pediatric trauma, pediatric care in the operating room, and non-accidental trauma on children.



Gabriela Wilson

Professor, Department
of Kinesiology and Multi-
Interdisciplinary Center for
Health Informatics

Ph.D. Computational Biochemistry, University of
Houston, 2003
M.S. Molecular Biology & Biotechnology, Free
University of Brussels, 1997
B.S. Chemical Engineering, Polytechnic University of
Iasi, 1992

Before joining UTA, Dr. Wilson served in different scientific roles in both the pharmaceutical industry and academia, and she was the founding chair of the Health Informatics and Information Management Program at the University of Southern Indiana. She has years of experience in interprofessional education activities and multidisciplinary research collaborations with community and out-of-state academic and industrial partners. Wilson has been an active member and is a fellow of the Healthcare Information and Management Systems Society.

RESEARCH INTERESTS: Consumer health informatics, social determinants of health, health information exchange, virtual reality

COLLEGE OF SCIENCE

MORTEZA KHALEDI, DEAN



Neda Ghazipour

Lecturer, Department of Earth and Environmental Sciences

Ph.D. Earth Science, University of Geneva, 2015
M.S. Engineering Geology, Azad University, 2007
B.S. Geology, University of Lahijan, 2003

Dr. Ghazipour worked as a researcher for the Geological Survey of Iran until 2016. Her work is focused on understanding landslides, and she has conducted research in the Zagros region of Iran. She is an expert in GIS and remote sensing software, as well as 3D modeling.



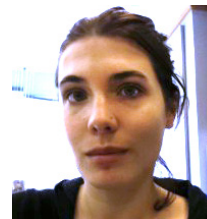
Keaton Hamm

Assistant Professor,
Department of Mathematics

Ph.D. Mathematics, Texas A&M University, 2015
B.S. Mathematics, Texas A&M University, 2010
B.S. Chemical Engineering, Texas A&M University, 2010

Dr. Hamm is currently completing a postdoctoral research associate position in the Mathematics Department at the University of Arizona, working with the National Science Foundation's Transdisciplinary Research in Principles of Data Science program. He is interested in the theory and algorithmic aspects of finding low-dimensional structure within high-dimensional data, as well as signal processing, including studying function spaces to model classes of signals. He has worked extensively on the interaction between high-dimensional sampling theory and radial basis function approximation schemes.

RESEARCH INTERESTS: Subspace clustering, CUR decompositions, graph sketches, quasi shift-invariant spaces



Megan Korchinski

Lecturer, Department of Earth and Environmental Sciences

Ph.D. Earth Sciences, University of Minnesota, 2019
M.S. Geology, University of Wellington, 2011
B.S. Geology & Marine Biology, University of Wellington, 2008

Dr. Korchinski's primary research focus is to explore the complex dynamics that characterize plate boundaries and to gain insight into exhumation processes that drive the exposure of regions of deep crust at the Earth's surface. In addition, she evaluates the impact of the viscosity and density structure of the crust and interactions between surface and tectonic processes upon the mechanisms and dynamics of deformation within actively deforming lithosphere.

RESEARCH INTERESTS: Geochronology, tectonics, isotope geochemistry, geodynamics, structural geology



Pedro Maia

Assistant Professor,
Department of Mathematics

Ph.D. Applied Mathematics, University of
Washington–Seattle, 2014

M.S. Applied Mathematics, Universidade Federal do
Rio de Janeiro, 2009

B.S. Applied Mathematics, Universidade Federal do
Rio de Janeiro, 2007

Dr. Maia is interested in computational neuroscience, neurology, applied mathematics, and data-driven methods. His lab work engages theoretical modeling of functional neural network activity driven by adaptive changes from plasticity. He recently partnered with Harvard University's Disease Biophysics Group to develop a MATLAB toolbox that extracts meaningful geometrical parameters from sequential images of injured axon segments. He seeks to understand the role of plasticity in overcoming injuries and degeneration of neurons in a network architecture.

RESEARCH INTERESTS: Functional deficits in neuronal networks, diagnostic tools for determining axonal functionality after degeneration



Dylan Parks

Assistant Professor of
Instruction, Department
of Biology

Ph.D. Quantitative Biology, UT Arlington, 2018

B.S. Biology/Genomics, UT Arlington, 2012

After earning his Ph.D. in quantitative biology, Dr. Parks enjoyed a career as the head QA/QC laboratory technician at a craft brewery in the DFW metroplex. As a professor, he teaches courses pertaining to biomedical sciences and anatomy, and has publications that examine symbiotic interactions of plants and bacteria. His interests also lie in the genome sequence of bacteria.

RESEARCH INTERESTS: Microbiology, fermentation science, biomedical sciences, symbiotic interactions



Matthew Robison

Assistant Professor,
Department of Psychology

Ph.D. Psychology, University of Oregon, 2018

M.S. Psychology, University of Oregon, 2014

B.B.A. Entrepreneurship, University of
Notre Dame, 2013

Dr. Robison's research investigates the human cognitive system, focusing especially on working memory and attention control. He leverages a combination of behavioral and physiological measures to understand the functions and limitations of memory and attention. His research has been funded by the Office of Naval Research and the National Science Foundation, and he has published 29 peer-reviewed articles in 13 academic journals.

RESEARCH INTERESTS: Memory, attention, cognitive neuroscience



**Byung Ran
(Ranny) So**

Assistant Professor,
Department of Chemistry and
Biochemistry

Ph.D. Chemistry, Ohio State University, 2010
M.S. Chemistry, Sungkyunkwan University, 2002
B.S. Chemistry, Sungkyunkwan University, 2000

Dr. So's research focus is understanding how RNA-protein complexes function in coding and non-coding gene regulation. Her interdisciplinary research expertise includes RNA biology with biochemistry, molecular, and structural biology to address fundamental RNA metabolism and its perturbation in several diseases. Before joining UT Arlington, she was a research associate at the University of Pennsylvania Howard Hughes Medical Institute.

RESEARCH INTERESTS: RNA-protein complexes, gene regulation, macromolecular complex assembly and function



Logan L. Watts

Assistant Professor,
Department of Psychology

Ph.D. Industrial & Organizational Psychology,
University of Oklahoma, 2016
M.A. Industrial & Organizational Psychology, Middle
Tennessee State University, 2012
B.S. Psychology, Abilene Christian University, 2010

Dr. Watts is an industrial/organizational psychologist who specializes in producing and translating evidence-based insights related to leadership, ethics, and creativity. He has co-authored over 40 scholarly papers on these topics and has partnered with managers across a diverse range of industries to improve the functioning of their teams and units.

RESEARCH INTERESTS: Leadership, leader development, ethical decision-making, ethics training and education, creativity and innovation



Nevin N. Weinberg

Associate Professor,
Department of Physics

Ph.D. Astrophysics, California Institute of
Technology, 2005
B.S. Physics & Math, University of Chicago, 2000

Dr. Weinberg is a theoretical astrophysicist with expertise in stellar physics. He studies the fluid dynamics of stars, exoplanetary systems, and relativistic compact objects. He did his postdoctoral work at the University of California–Berkeley and was an associate professor at the Massachusetts Institute of Technology. His research group studies a variety of astrophysical phenomena related to stellar fluid dynamics and binary evolution, including tides in coalescing neutron star binaries and their impact on the gravitational-wave signal of the inspiral; dynamical tides in stellar binaries and post-main sequence stars; and orbital evolution of short-period exoplanets (hot Jupiters).

RESEARCH INTERESTS: Stellar fluid dynamics, tidal physics, relativistic astrophysics, gravitational wave sources, neutron stars, white dwarfs, exoplanets



Rick Wilder

Assistant Professor,
Department of Physics

Ph.D. Electrical Engineering & Space Physics, Virginia Tech University, 2011

M.S. Electrical Engineering & Space Physics, Virginia Tech University, 2008

B.S. Electrical Engineering, Virginia Tech University, 2005

Dr. Wilder was a research scientist at the Laboratory for Atmospheric and Space Physics at the University of Colorado–Boulder before joining UT Arlington. His main research interests include using the near-Earth space environment as a laboratory in which we can learn about plasma physics. He is especially interested in magnetic reconnection, plasma and radio waves, and magnetospheric current systems. Wilder has worked with ground-based observations in the past, and currently works with space-based observations and numerical modeling of the geospace systems.

RESEARCH INTERESTS: Space plasma, MHD simulations



Dengdeng Yu

Assistant Professor,
Department of Mathematics

Ph.D. Statistics, University of Alberta, 2017

M.S. Statistics, University of Alberta, 2013

M.S. Finance, Universität Ulm, 2011

B.S. Computational & Applied Mathematics, Southeast University, 2007

Dr. Yu joins UT Arlington from the University of Toronto's Canadian Statistical Sciences Institute, where he focused on causal inference in Alzheimer's progression. Through an analysis of the Alzheimer's Disease Neuroimaging Initiative dataset, he has identified important biomarkers that need to be accounted for in making causal inference and located the subregions of the hippocampus that may affect behavioral deficits.

RESEARCH INTERESTS: High-dimensional and functional data analysis, neuroimaging and imaging genetics data analysis, quantile regression



SCHOOL OF SOCIAL WORK

SCOTT D. RYAN, DEAN



Keith A. Anderson

Cheryl Milkes Moore
Endowed Professor and Ph.D.
Program Director, School of
Social Work

Ph.D. Gerontology, University of Kentucky, 2007
M.S.W. Clinical Social Work, Virginia Commonwealth
University, 2000

B.A. Liberal Arts, Dickinson College, 1987

Dr. Anderson's scholarship focuses on understanding and improving the lives of older adults and their caregivers. He was a John A. Hartford Foundation Doctoral Fellow and faculty scholar in geriatric social work and is currently a Gerontological Society of America fellow. He is editor of the *End of Life Care Series* published by Columbia University Press. Prior to his current position, Anderson was on faculty in the College of Social Work at Ohio State University and in the School of Social Work at the University of Montana.

RESEARCH INTERESTS: Physical and mental health of older adults and their caregivers, home- and community-based services for older adults, creative interventions to improve quality of life for older adults, end-of-life issues



Brittanie Atteberry Ash

Assistant Professor,
School of Social Work

Ph.D. Social Work, University of Denver, 2020
M.S.W., University of Michigan, 2011

B.S. Human Services, Metropolitan University of
Denver, 2006

Dr. Ash uses research on LGBTQ+ populations as an exemplar for understanding the dynamics and processes of oppression within diverse communities and contexts. She also focuses on promoting justice and inclusion within the classroom and field education experiences, identifying strategies for educators to more fully integrate a critical social justice lens into their pedagogy and field supervision of students. Believing in the power of social work education to transform students into practitioners dedicated to a just world, she is passionate about her research as a critical social work scholar advancing the discipline's commitment to social justice.

RESEARCH INTERESTS: Civic and community engagement, culturally responsive practice, disparities, gender, higher education, LGBTQ+, marginalized populations, public policy, social justice



Amanda Aykanian

Assistant Professor,
School of Social Work

Ph.D. Social Work, State University of New York–
Albany, 2016

M.A. Applied Sociology, University of Massachusetts–
Boston, 2013

B.A. Developmental Psychology, Framingham State
University, 2006

Dr. Aykanian has more than 13 years of program evaluation and community-based research experience. Her dissertation research was supported by the William J. Reid Endowment Scholarship. Most recently, she guest edited a special issue of the *Journal of Social Work Education* featuring curriculum, field training, and experiential learning innovations for teaching students about homelessness. She worked for the National Center for Excellence in Homeless Services at the State University of New York–Albany since 2013, moving to a research lead role by May 2019.

RESEARCH INTERESTS: Homelessness, geographic mobility, program and policy implementation, service system dynamics, transportation, mixed methods study design, social work education



Michael Bennett

Assistant Professor of
Practice, School of
Social Work

M.S.W., University of Windsor, 2012

M.A. Clinical Psychology, University of Windsor, 2010

Bennett's expertise is in hospice palliative care and bereavement. He has over eight years of experience in the field in the capacity of a clinical social worker, program evaluator/developer, and consultant/educator. Bennett also founded Oneday Dreams, a nationwide charity in Canada that fulfills final dreams for adults who are in their last year of life. Since 2016, his exemplary and compassionate clinical work, inspirational leadership, and commitment to community service has earned him awards from Cancer Care Ontario, the United Way, and the Ontario Association of Social Workers.

RESEARCH INTERESTS: Sexuality and intimacy at end-of-life, tension associated with service provision, final dream fulfillment, live music performance in hospice settings



Danielle R. Eugene

Assistant Professor,
School of Social Work

Ph.D. Social Work, Louisiana State University, 2020

M.S.W., Louisiana State University, 2009

B.S. Psychology, University of Louisiana–
Lafayette, 2007

Dr. Eugene joins UT Arlington from Louisiana State University, where she was a graduate research assistant with the Social Research and Evaluation Center. Her research focuses on the social ecology of economically disadvantaged ethnic minority youth. Specifically, she is interested in the effects of family, school, and community systems on educational and economic outcomes for ethnic minority youth. She is a licensed clinical social worker in the states of Louisiana and Texas with seven years of practice experience in child welfare and school social work.

RESEARCH INTERESTS: Social ecology of disadvantaged ethnic minority youth, transition-aged youth/emerging adulthood, school social work practice, intervention programs for underserved and vulnerable populations



Mia M. Kirby

Professor of Practice, Center
for African American Studies
and School of Social Work

Ph.D. Sociology, Texas Woman's University, 2019

M.S.W., University of Maryland–Baltimore, 2006

As a licensed clinical social work supervisor, Dr. Kirby has practice experience with the Baltimore Juvenile Justice System, foster care, outpatient mental health, private practice, and nursing and rehabilitation facilities. Her most recent research examined the relationship between the strong Black woman archetype and mental health help-seeking behaviors of Black women. Additionally, Kirby is a licensed clinical social work supervisor providing supervision for LMSWs seeking LCSW, LMSW-IPR, and LMSW-AP licensure.

RESEARCH INTERESTS: Qualitative research focused on race, ethnicity, gender, mental health, and discrimination—more specifically, examining an intersectional approach to mental health service provider practices



Donna Schuman

Assistant Professor,
School of Social Work

Ph.D. Social Work, UT Arlington, 2017

M.S.W., UT Austin, 2008

M.Ed. Counseling & Personnel Services, University of
Maryland-College Park, 1995

Dr. Schuman joins UTA from the University of Kentucky, where she was an assistant professor. She previously worked as a social worker for the Department of Veterans Affairs and the Army and has almost two decades of clinical behavioral health experience. She is dedicated to improving trauma treatment outcomes for military populations through psychophysiological interventions using mobile health and virtual technologies. Schuman holds licensure in clinical social work and professional counseling and is certified as a master addiction counselor. She also holds national certifications in biofeedback and neurofeedback.

RESEARCH INTERESTS: Traumatic stressor disorders and suicide in military populations, psychophysiological interventions, psychosocial determinants of health, ethnographic methods



Sherece Shavel

Assistant Professor of Practice,
School of Social Work

Ph.D. Human Services, Walden University, 2017

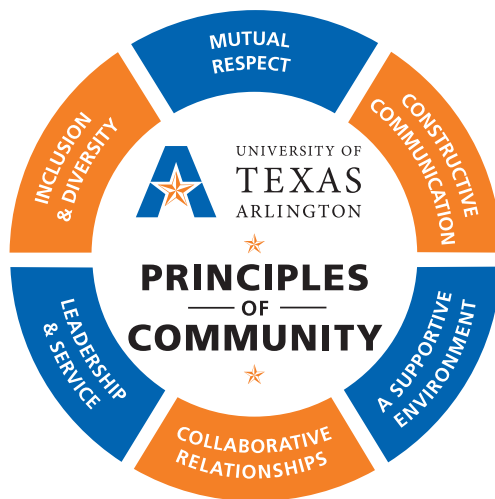
M.S.W., Rutgers, 2004

B.S.W., Seton Hall University, 2000

Dr. Shavel comes to UTA with approximately 20 years of professional social work practice experience in the areas of counseling, program development, and administrative leadership. She is the founding president of the Central Texas Association of Black Social Workers, co-founder of the Black Female Fatherhood Scholars Network, and council member with the National Parenting Network. She is a licensed master social worker holding certification as a forensic social worker and a human services board-certified practitioner. She also serves on the editorial board for the *Journal of Mental Health and Social Behaviour* and peer review for the *Journal of Social, Behavioral, and Health Sciences*.

RESEARCH INTERESTS: Post-incarceration paternal experiences of African American men; the intersection of mental health, culture, spirituality and criminality; post-traumatic growth development and functioning





The University of Texas at Arlington community is committed to the advancement of knowledge and the pursuit of excellence. Realization of this commitment requires awareness and active participation by every member of the community. We achieve the goals of the University when we instill, nurture, and practice these six Principles of Community.



The University of Texas at Arlington does not discriminate on the basis of race, color, national origin, religion, age, gender, sexual orientation, disabilities, genetic information, and/or veteran status in its educational programs or activities it operates. For more information, visit uta.edu/eos. For information regarding Title IX, visit uta.edu/titleix.