



SCHOOL OF SOCIAL WORK

THE WORLD TALKS ABOUT CHANGE; WE CREATE CHANGE.



MASTER OF SOCIAL WORK



WEEKLY UPDATE  
December 6, 2022

SOCIAL JUSTICE SPOTLIGHT

TABLE OF CONTENTS

- Page 1.....Social Justice Spotlight
- Page 2..... Student Spotlight, YOU MATTER
- Page 3..... , Upcoming IMPORTANT UTA events
- Page 4....., Important Dates, CEU
- Page 5..... Get involved Events
- Page 6..... Page 7..... MSW PROTOCOL
- Page 8..... Academic and Volunteer Opportunity
- Page 9 ..... Employment Opportunities
- Page 10/11..... Resources

On December 7th, we celebrate the Remembrance of Pearl Harbor

On December 7<sup>th</sup> let us celebrate National Pearl Harbor day.

This National celebration honors those who have lost their lives on December 7<sup>th</sup>, 1941. More than 3.500 Americans lost their lives that day when Japan attacked Pearl Harbor.

On August 23, 1994, the US Congress designated December 7<sup>th</sup> to be the National holiday for the Remembrance of the victims of Pearl Harbor.

For more information, [CLICK HERE!](#)

# GRADUATE STUDENT LEADER VOLUNTEER OPPORTUNITY

**WE WANT YOU!**

GRADUATE STUDENT LEADER PROGRAM

Do you enjoy...

- Networking with SSW faculty and staff?
- Mentoring fellow MSW students?
- Learning new advocacy and communication skills?

BECOME A  
GSL

JOIN OUR MSW GRADUATE STUDENT LEADER PROGRAM!

Click [HERE](#) to Apply TODAY!

The GSL program is designed to build community and connections between MSW students and strengthen the bond that students have with the School of Social Work by facilitating the exchange of accurate and timely information. Each MSW student in the program is assigned to a GSL, a fellow student who has received extensive training on leadership, communication, and information on the School and MSW program.

**Interested in becoming a GSL? [Click here!](#)**

## YOU MATTER

Hello Mavs! As we wrap up the end of this semester, give yourself a pat on the back and remember to be kind to yourself. As Graduate students we face many versatile problems and scenarios that don't always have the best effects on our mental health.

At the beginning of this semester, we highlighted goals, whether that be career goals, school goals, or life goals. Did you accomplish or make advancements towards at least one?

The end of the year serves as a time to reflect on what we've accomplished and what we must work on. Take time this break to continue that strive.

Here are a few ways to keep goals structured: "The SMART concept was introduced by notable management consultant Peter Drucker for goal setting in business, but the process applies to students as well."

In this context, SMART is an acronym:

- Specific
- Measurable
- Achievable
- Relevant
- Time-specific

This method requires a student to consider ALL their available resources towards what they're trying to accomplish. It makes goals not only achievable but realistic and in a practical timeline.

For more information click this link: <https://gis.usc.edu/blog/why-setting-goals-matters-in-graduate-school/>

Warm Regards,  
**Olga Carrillo**  
MSW Student, Graduate Student Leader, The University of Texas at Arlington

Graduating? Check  
your Outlook MyMav!



GRADUATING THIS  
SEMESTER?  
TAKE THE  
**EXIT SURVEY**

The graphic features a blue background with white diamond shapes. Two photos are integrated: one at the top showing two students walking on a campus path, and another at the bottom showing two female students smiling. The text is centered and uses a mix of white and orange colors.



CALLING SOCIAL WORK ALUMNI



BSW & MSW students would like you to donate your cap, gown, and hood to the Lending Closet at UTA! If you would like to donate, please reach out to the contacts below.

CONTACT US:  
Precious.Bell@mavs.uta.edu  
lms1135@mavs.uta.edu  
Shermell.Osborne@uta.edu



SCAN HERE



Thank You

SSW Lending Closet

The graphic has a blue background with a white horse head logo. It includes a photo of graduates throwing their caps. The text is in white and orange. A yellow box highlights the QR code area.

## IMPORTANT DATES

### FALL 2022

- Dec. 6- Last day of classes
- Dec. 7- Student Study Day (no classes)
- Dec. 16- School of Social work Graduation, 6:30 PM
- Jan. 16-- Martin Luther King Jr. Holiday
- Jan. 17 --Late registration/ First day of classes
- Feb. 1-- Census date
- Field advisors POWER HOUR UPDATED
- \*Sharon & Natalie will be splitting MHSU students!

### Spring 2023

- The Spring 2023 Field Application is open **October 03, 2022**.
- Application deadline is NOW CLOSED.
- See the Spring 2023 Field Education Calendar for Block and for Split [here](#).  
**InPlace fee is due on the first day of class**



## ADVISING

Need to meet with an advisor but there's no upcoming appointment available? Drop-in either in person or virtually on Wednesdays. To schedule your 30-minute drop-in time, click [here](#). Be sure to select in-person or virtual and your advisor. Remember, drop-in sessions are on a first come basis.

Feeling a bit lost?  
Start with  
your  
Graduate Student  
Leader!

Don't know who that is?

Email [Martaya Brown](#) or [Lecia Edwards](#) to get connected!

## LICENSING

- If you're in your final semester and want to get started on applying to ASWB to take the LMSW licensing exam, [click here](#) to request the Dean's Letter for Licensure, which UTA will send to ASWB. More info can be found [on the ASWB site](#) and our [SSW licensure page](#).
- **There's lots of great updated information about licensing in the Student Success and Advising Course on Canvas—Check it out!**
- Interested in the LCDC? Scroll to the end of this [Licensure](#) webpage and click on the Texas LCDC Licensing 2021 PDF for a chart that shows how different education levels can prepare you for the LCDC.



## FIELD PLACEMENTS

### General

- **InPlace has a new URL! All students, agencies, and Field Instructors will need to use the new URL.** <https://inplace.uta.edu/>
- The InPlace fee is \$67 per year or \$130 for a lifetime. Each student will need to plan to pay the InPlace fee on the first day of class for that semester they are starting field.
- [InPlace Training](#) and [Logbook Training](#) can be found here!
- [Field forms are available here!](#)
- [Field FAQ](#)
- If you are having technical difficulties with InPlace please email [sswfield@uta.edu](mailto:sswfield@uta.edu) and include a screenshot of the issue.

### FIELD POWER HOURS

**This is an opportunity for you to ask questions, similar to Office Hours for faculty!**

- Aging & Health (Interim Field Advisor for Mental Health last names A-L)
  - Field Advisor: Natalie Mangham
  - 1<sup>st</sup> & 3<sup>rd</sup> Tuesday of the month, 2-3 pm
  - [Click here to join the meeting](#)
- CAP & Children & Families
  - Field Advisor: Monica Brown
  - 1<sup>st</sup> & 3<sup>rd</sup> Wednesday of the month, 4-5 pm
  - [Click here to join the meeting](#)
- BSW/BSSUT ( **Interim Field Advisor for Mental Health last names M-Z**)
  - Field Advisor: Sharon Martin
  - 1<sup>st</sup> & 3<sup>rd</sup> Thursday of the month, 3-4 pm
  - [Click here to join the meeting](#)

Foundation

- Field Advisor: Andrea Jameson  
[andrea.jameson@uta.edu](mailto:andrea.jameson@uta.edu)
- 1<sup>st</sup> and 3<sup>rd</sup> Thursday of the month, 6-7 pm
- [Click here to join the meeting](#)



## GET INVOLVED



### UTA School of Social Work JOIN THE SOCIAL WORKERS FOR CHILDREN AND FAMILIES STUDENT ORGANIZATION!

Join a new student organization for students interested in working in the social work field with children and families!

- NETWORK WITH OTHER UTA STUDENTS
- HAVE GUESTS/PROFESSIONALS VISITS WITHIN THE SOCIAL WORK FIELD

For those interested in joining please reach out to Oscar Aguilu via email at [oxa8564@mavs.uta.edu](mailto:oxa8564@mavs.uta.edu) or on Microsoft Teams.

## MSW Thesis Peer Support

Click the flyer to fill in an interest form at <https://forms.office.com/r/WvfdXpeyaf>

We're looking to start an ongoing group that will share a Teams chat to provide a space for coworking and support



## SSW CAP GRADUATES

SAMSW IS COLLECTING ALUMNI CONTACT INFORMATION FOR A CAP ALUMNI NETWORK



SCAN OR CLICK TO REGISTER!



### Study on the Current and Future School of Social Work Buildings

#### Seeking Participants - We Want You!

- We are seeking students to share their experiences with the current and future School of Social Work buildings.
- We want to learn more about how you feel in the building, how accessible it is, and how teams-udensed it is.
- Each participant will be interviewed twice—once in the fall and once in the spring. Each confidential interview will last about one hour.
- You can choose whether you would like to be interviewed in-person in a private room, or online via Microsoft Teams.
- By participating in an interview, you will be entered into a raffle to win a \$10 Fox 5 gift card.

#### About the Researchers and the Project

• Megan Wetmore, LMST and Dr. Regina Pasotnik, PhD are researchers from the School of Social Work at the UT-Arlington.

#### How Do I Become a Part of This Project?

- You are eligible to participate if you are at least 18 years old, a current UTA social work student, have taken at least one in-person class in the current School of Social Work Building A, planning to take in-person social work classes in spring 2023, not planning to graduate this December 2022, and can speak and understand English.
- Please contact us if you have any questions or would like to sign up.  
Email: [megan@wetmore.com](mailto:megan@wetmore.com)

### Gerontology Organization Monthly Meeting

- Interested in creating a better world
- Interested in a career working with older adults
- Working in a field placement with older adults
- Want to build your resume with student activities
- Looking to network with your peers.

Consider joining GO



To Join GO: <https://www.facebook.com/gerontology.org>

Click and search for the Gerontological Organization

Desktop email: [gerontology@uta.edu](mailto:gerontology@uta.edu) #gerontology@uta

Connect to the TEAMS Meeting



TEAMS Meeting LINK

## SOCIAL WORK ADVOCACY DAY (SWAD) 2023

Save the date!

March 3, 2023

Texas State Capitol

@naswtx\_advocacy

[naswtex.naswtx@socialworkers.org](mailto:naswtex.naswtx@socialworkers.org)



## EVENTS



### UNIVERSITY OF TEXAS AT ARLINGTON

School of Social Work  
Invites you and your family to a

## Pre-Commencement Reception

in recognition of your outstanding student achievements

Friday, December 16, 2022  
2:00 pm-4:00 pm (come & go)  
School of Social Work  
Building B, Room 107

211 S. Cooper St., Arlington, TX 76019

Please join us for desserts and refreshments before heading over to Globe Life Park for Commencement!

JOIN US!

# STUDENTS FOR GLOBAL CHANGE

Meets every 2nd Thursday of the month on Teams

Next meeting:  
**12.08.22**  
**4 PM**



Scan to join us on Teams!

or go to: <https://bit.ly/3TgYgBI>

for more information, contact us at [SGC.UTA@GMAIL.COM](mailto:SGC.UTA@GMAIL.COM)

# Student and Academic Affairs

## MSW Student Guidance Protocol

Do you have questions about the MSW program, registration/course information, your degree plan, field, graduation, or something other about the MSW program? Are you having issues navigating your class information or have instructor questions? Follow the steps below to get the answers you need quickly!



### ➔ Step 1: Initial point of contact

1. Registration issues, degree plan, graduation information:

- [Academic Advisor](#)

2. Questions about field:

- Reach out to your field liaison
  - Still have questions, then:
- [Field Advisor](#)



3. General questions about MSW program:

- Reach out to a [GSL](#) (Graduate Student Leader)
  - Still have questions or other program issues:
- Reach out to the Office of Graduate Programs:
- [Dr. Joyce White](#)



- [Ginger Jackson](#)

4. Questions about your course assignments, Canvas, syllabus:

- Reach out to your instructor first (see Canvas for details)

### ➔ Step 2: Second point of contact

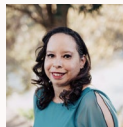


Still need answers after initial point of contact or issue not resolved from step 1?

- Academic Advising and Field Education Concerns:
  - [Ms. Patrice Green](#), Manager of Student Success & Advising



- Course or instructor issues:
  - [Dr. Amanda Hassan](#), Assistant Dean of Academic Affairs



- Graduate program issues:
  - [Dr. Diane Mitschke](#), Associate Dean of Student & Academic Affairs



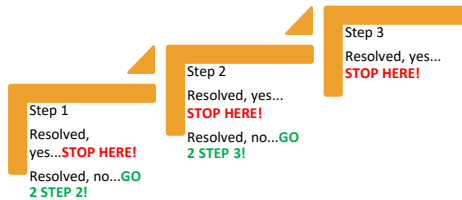
➔ **Step 3: Third point of contact**

Still need answers after second point of contact or issue not resolved from steps 1 or 2? Please contact:

[Dr. Diane Mitschke](#), Associate Dean of Student & Academic Affairs



➔ **Process all together**



**JOB OPPORTUNITES**

**Trauma Therapist**

**Overview**

Date Posted: 6/23/2022

Job Code: THRTDSP

Position Type: Exempt

City: Fort Worth

State: TX

Country: United States of America

Category: Direct Care - Clinical Therapist/Social Work/Case Worker

Requisition Number: 8977

Position Number: 12493

**JOB DESCRIPTION**  
Caseworker - Community Liaison  
State Senator Royce West

Job duties/responsibilities include but are not limited to:

- Acts as the liaison for the Senator including answering casework correspondence, meeting with constituents, verbal communications with constituents, and serving as a liaison with federal, state, district, and local agencies related to constituent casework;
- Problem solving and troubleshooting;
- Coordination of assigned programs and projects;
- Informs the Senator and the Chief of Staff of all happenings by screening district media sources and interacting with constituents;
- Working on various issues with other senate and state agency staff, and various public/private entities;
- Acts as a liaison to local, state and federal officials and other persons or groups to form effective relationships for the Senator;
- Assesses casework for problems requiring action;
- Monitors scheduled district meetings for the Senator with constituents;
- Working well under pressure and handles stress;
- Working a flexible schedule including long hours, nights and weekends;
- Performs other duties as assigned;
- Knowledge of all issues and events in the district in which the Congressman is involved;
- Ability to work cooperatively and courteously with others;
- Temperament to communicate with a variety of personalities in a tactful, pleasant, and professional manner;
- Thoroughness and careful attention to detail;
- Ability to exercise discretion and independent judgment in fulfillment of casework responsibilities; and
- Knowledge of office policies, practices, procedures, and computer applications.

Interested Applicants please send a cover letter and resume to:

La Juana Barton  
Chief of Staff  
Office of State Senator Royce West  
lajuana\_d.Barton@senate.state.tx.us

[Click here for more information](#)



[Click here for more information](#)



**ABOUT US**

As the public hospital for Dallas, Parkland has been providing exceptional care stretches back for over a century. Today, many of Parkland's specialty areas have garnered national achievements in care, research, and technological innovation.



**CURRENT OPENINGS:**

- Social Worker (BSW) - bilingual Spanish
- Social Worker (LMSW)
- Social Worker (LMSW) - bilingual Spanish
- Mgr, Social work



**BENEFITS**

- Medical, Dental, Vision
- 401 K
- Pension
- Employee Assistance Program
- Life Insurance
- Child Care
- And many others

**CONTACT**

Gillian Williams  
214-590-8269  
gillian.williams@phhs.org  
ParklandCareers.com  
5200 Harry Hines Blvd., Dallas, TX, 75235

**BENEFITS**

**Healthcare**

- Medical
- Dental
- Vision
- Life Insurance
- Flexible Spending Account
- Disability
- Pet Insurance
- Supplemental Insurance
- Dependent Care Flexible Spending Account

**Financial**

- Pension
- 401K up to 6% Match
- Legal Insurance
- Tuition Reimbursement
- Federal Loan Repayment Program
- Milliman Financial Advisor Support for Retirement
- Employee Assistance Program

**Beneplace**

- Discounts
- Fitness Program
- Weight Loss Support
- Auto & Home Insurance

**Additional Benefits**

- Employee Health Center
- Pharmacy
- Expectant Mothers deliver for free \*
- Child Care



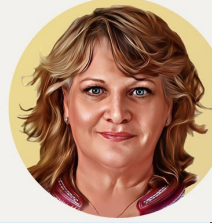
Care. Compassion. Community.





# ACADEMIC OPPORTUNITIES

STEPHANY JUNE BRYAN  
**BOLD SPIRIT OF ACHIEVEMENT**  
SCHOLARSHIP



## SSW GRADUATE CERTIFICATES

Certificates are a great way to gain specialized expertise while earning your degree. Talk to your advisor today about adding a certificate to your plan this Fall!

### ADMINISTRATIVE LEADERSHIP

Focus on program development, leadership, and supervision of program staff.

Open to All Direct Practice students

Required courses: 5310, 5320, 5324

Courses offered in Fall 2022: 5310, 5320, 5324

### COMMUNITY LEADERSHIP

Focus on community organization, grant writing, advocacy, and community planning.

Open to All Direct Practice students

Required courses: 5321, 5326, 5329

Courses offered in Fall 2022: 5321, 5329

### POLICY LEADERSHIP

Focus on social policy knowledge, advocacy, program evaluation, and administration.

Open to All Direct Practice students

Required courses: 5305, 5303, 5328

Courses offered in Fall 2022: 5305, 5303, 5308

### ORGANIZATIONAL LEADERSHIP

Focus on organizational leadership, supervision of staff and budgeting.

Open to All Direct Practice Students

Required courses: 5320, 5324, 5329

Courses offered in Fall 2022: 5320, 5324, 5329

### MILITARY SOCIAL WORK

Focus on clinical social work practice with the military and veterans community.

Open to All Direct Practice students

Required courses: 5350 and 4 of the following: 5392 Military Trauma, 5316, 5320 (The Military Family), 5318, 5304, 5380 (Treatment with Military Popul)

Courses offered in Fall 2022: 5350, 5392, 5306 (The Military Family), 5380, 5307 (Treatment with Military Popul)

### MILITARY, VETERAN, & FAMILY CARE

Focus on working with military and veteran communities in a non-clinical setting.

Open to CAP students, all graduate students at UTA.

Required courses: 5355, 5392 Military Trauma, 5316, 5309

Courses offered in Fall 2022: 5355, 5392, 5306 (The Military Family)

The 2023 Patrocinio De Guzman Scholarship Application

Have you made any contributions thus far to the Asian American community (e.g., volunteer work, internships, service-learning classes, etc.)?

Are you planning to use your social work degree to help alleviate problems experienced by the Asian community?

If you answered yes to either of these questions, the Dr. Muriel Yu Endowed Scholarship could be for you!

- \$1,000 scholarship
- Open to both BSW and MSW students
- Deadline to apply is December 9<sup>th</sup>, 2022

Apply now at: [All Opportunities - The University of Texas at Arlington Scholarships \(academicworks.com\)](http://All Opportunities - The University of Texas at Arlington Scholarships (academicworks.com))

## Study Abroad: Kenya

**PROGRAM OVERVIEW**

- Interactive Learning
- Travel with 3 experts in the field
- Earn 3 Course Credits
- Travel at UTA and in Kenya
- Meet and meet UTA degree plans
- Enhance understanding of education in international context

**Application Deadline:** March 2023

**Program Date:** Summer 2023

**Eligibility:** Must be a UTA Student Must be in good Judicial Standing

**Highlights:**

- Visit the Kilimanjaro, Largest Slum in Africa and 3rd largest in the world
- Explore the Thriving Tea vs National Park
- Experience the City of Nairobi

**ESTIMATED COSTS:**

- Housing & Meals
- Training & Tuition
- Healthcare
- Airfare/Transportation

**Program Leaders:**

- Dr. [Name]
- [Name]
- [Name]
- [Name]

COCE Kenya

## Spring 2023 Scholarships

UTA School of Social Work is offering scholarships for the Spring 2023 semester

Deadline to apply is December 9th

# VOLUNTEER OPPORTUNITIES

**Volunteer for commencement**  
Volunteers are needed for UTA's fall commencement ceremonies at Globe Life Field. Help is needed for set up Thursday, Dec. 15, and ceremonies Friday, Dec. 16. [Complete the Commencement Volunteer Form](#) by Monday, Dec. 5.

## Teddy Bear Drive

with Petey Parker Foundation

### Donations needed

- Teddy Bears (Any size)
- Cuddly critters/ critter toys



To donate, please bring your donation to one of the following drop-off locations on campus (look for a decorated donation box with red bows and blue letters):

- E.H. Hereford University Center
- 1st Floor of the Central Library
- 1st Floor of the Business Building (outside the Cafe)

The last day to donate is WEDNESDAY, DECEMBER 14TH at 5:00 PM. For questions about monetary contribution, please contact SHRMs Community Service Coordinator, Kristina, at [nx10946@mavs.uta.edu](mailto:nx10946@mavs.uta.edu).  
E.H. Hereford University Center

# WE WANT YOU!

GRADUATE STUDENT LEADER PROGRAM

- Do you enjoy...
- Networking with SSW faculty and staff?
  - Mentoring fellow MSW students?
  - Learning new advocacy and communication skills?

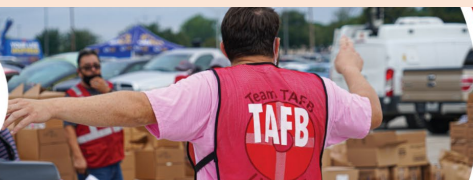
BECOME A **GSL**



JOIN OUR MSW GRADUATE STUDENT LEADER PROGRAM!

Click [HERE](#) to Apply TODAY!

TARRANT AREA FOOD BANK tafb.org



# Volunteer TODAY






## RESEARCH

[Social Work Course Guides](#)

[Student Research Opportunity Center](#)



UNIVERSITY OF TEXAS ARLINGTON | SCHOOL OF SOCIAL WORK

### TITLE IV-E STIPEND FOR BSW/MSW STUDENTS

**FOR STUDENTS WHO ARE INTERESTED IN:**

- CHALLENGING AND REWARDING WORK**  
Students will be working with children, parents and families impacted by child abuse and neglect, and who are in foster and adoptive placement.
- FINANCIAL AID**  
Stipend amount offered through Title IV-E Child Welfare Programs are:  
BSW Students: \$  
MSW Students: \$
- INTENSIVE TRAINING AND SOCIAL WORK EXPERIENCE**  
No other field and work setting offers such wide range of opportunities to learn, network, and grow.
- POST GRADUATION OPPORTUNITIES**  
Students sign a contract with the Department of Family and Protective Services (DFPS) to complete a minimum of 6 months of employment with full salary and benefits.

**HOW TO APPLY**

- GET IN TOUCH**  
Start the process by contacting Stipend Coordinator Kimberly Evans at [kimberly.evans@uta.edu](mailto:kimberly.evans@uta.edu) or an appointment to discuss the application process and obtain an application form.
- STIPEND APPLICATION & WRITING SAMPLE**  
Complete the stipend application and writing sample online, and return to [kimberly.evans@uta.edu](mailto:kimberly.evans@uta.edu) by stipend deadline.
- LETTER OF RECOMMENDATION**  
Submit letter of recommendation from a UTA professor to [kimberly.evans@uta.edu](mailto:kimberly.evans@uta.edu) by stipend deadline.
- PRELIMINARY INTERVIEW**  
Participate in a preliminary interview with UTA Title IV-E Stipend Program Coordinators.
- FINAL INTERVIEW AND SELECTION**  
Eligible candidates will be invited to a final interview with Child Protective Services staff.

**CONTACT US:**  
KIMBERLY EVANS, LCSW  
TITLE IV-E COORDINATOR  
[KIMBERLY.EVANS@UTA.EDU](mailto:KIMBERLY.EVANS@UTA.EDU)

**VISIT US ONLINE:**  
[UTA.EDU/SSW](http://UTA.EDU/SSW)

*The Child Welfare Stipend is provided through the Title IV-E Training Contract, a federally funded initiative to enhance child welfare practice by infusing the work force with more BSW and MSW educated practitioners*



## STAY SAFE

### Covid-19 Vaccine



Contact [covidvaccine@uta.edu](mailto:covidvaccine@uta.edu) with any questions. If the dates and times of these clinics don't work for you, the COVID-19 vaccine is free and widely available in Arlington and surrounding communities. To find a vaccine or booster near you, enter your zip code into the [CDC's COVID-19 vaccine finder](#).

[Click Here for more information.](#)

[Required COVID-19 testing and new protective measures for Spring 2022 \(English and Español\) \(uta.edu\)](#)  
Classroom density, updated info from university on testing and return to campus

#### Daily Self-Check before Coming to Campus



All students must take their temperature daily before going to campus. If you experience any symptoms that are new, worsening, or not normal for you, please remain or return home.

### RECRUITING PARTICIPANTS FOR TRANS AND NONBINARY EXPERIENCES IN SOCIAL WORK EDUCATION

#### Requirements:

- 18 years old or older
- Identify as gender diverse (such as trans, two-spirit, nonbinary, agender)
- Are either:
  - A) a social work student in the last two years (current, withdrawn, or graduated) OR
  - B) social work faculty (part time or full-time) teaching within the last two years

#### Expectations:

Complete one 30-45 minute Zoom interview about your experiences in social work education as a gender diverse person.

#### Compensation:

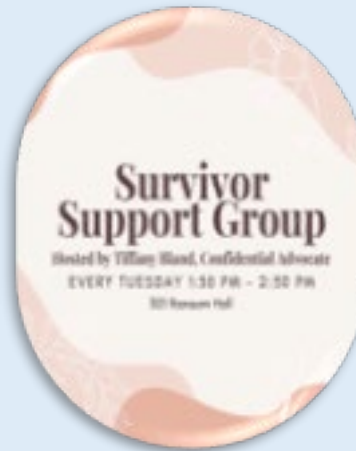
20-30 people will complete the interview and receive a \$15 gift card by email.

More info:



**INTERESTED?**  
Contact M. Killian Kinney (they/them) at [markkinn@iu.edu](mailto:markkinn@iu.edu) or Richard Brandon-Friedman (he/him) at [rifriedm@iu.edu](mailto:rifriedm@iu.edu)

  
**INDIANA UNIVERSITY**  
IRB Protocol #16159



## [UTA Academic Calendar](#)

## [Evidence-Based Practice Research Guide](#)



**Check Canvas for the MavsUnite Page!**  
**To add please e-mail:**  
[Emily Clark](mailto:Emily.Clark@uta.edu)

## [SAR Center](#)

(Formerly Office of Students with Disabilities)

### MANAGING STRESS AND ANXIETY DURING COVID-19

UTA COUNSELING AND PSYCHOLOGICAL SERVICES (CAPS)

#### THERAPIST ASSISTED ONLINE (TAO)

Visit [TAOconnect.org](http://TAOconnect.org)



#### THRIVE APP



Download "Thrive at UT" on App Store or Google Play

#### MAVS TALK 24HR CRISIS LINE

Call (817)272-8255



Visit [uta.edu/caps](http://uta.edu/caps) for more information

UTA is a COMMUNITY THAT CARES



### SOCIAL WORK CONNECTIONS LAB



#### RECEIVE HELP WITH:

- Brainstorming ideas
- APA Formatting
- Writing flow & structure
- Meeting requirements
- Build social work skills
- Avoiding plagiarism



Login to your school account and go to [s110.t32rxval.com/33606333](http://s110.t32rxval.com/33606333)

Get ahead this semester by booking your appointments now!



DREAMERS WELCOME

In Crisis?  
 Text HELLO to 741741

CRISIS TEXT LINE |

Free, 24/7, Confidential

Please contact us with any additional questions. Visit [uta.edu/caps](http://uta.edu/caps) or Scan the QR code

#### Our Services

**Peer-Led Team Learning (PLTL)**  
 Ready, small group study workshops are offered to support 21st century learning and provide students with opportunities to learn and be mentored by students similar to them. PLTL helps you gain a better understanding of content, concepts, and how to apply what you've learned.  
 PLTL is a free for students but requires registration required during first week of classes.  
 PLTL study groups begin the 3rd week of class and attendance is mandatory. PLTL groups meet weekly at 11:00 AM and 12:00 PM. Sessions meet weekly for 13 weeks throughout study sessions. Maximum 12 students per group.  
 PLTL sessions are offered to students who have demonstrated academic competency in the upper-level PLTL subjects.

**Supplemental Instruction (SI)**  
 SI is a program designed to help students who are struggling in a course. SI sessions are held weekly and are led by SI leaders who are trained to help students who are struggling in a course. SI sessions are held weekly and are led by SI leaders who are trained to help students who are struggling in a course.

**Tutoring**  
 Tutoring is available for all courses. It is a one-on-one or small group session where a tutor helps you understand and complete your assignments. Tutors are trained and certified to provide high-quality tutoring services. Tutors are available for all courses.

**Academic Coaching**  
 Academic Coaching is a one-on-one process of helping students identify their strengths and weaknesses, then develop a personalized study plan. Academic Coaching is a free service provided to improve your study skills, time management, motivation, writing, and more.

**MAVS Talk 24 Hour Crisis Line**  
 MAVS Talk is a free, confidential, 24-hour crisis line available to all students. It is staffed by trained crisis counselors who provide support and resources for students in crisis. Call (817) 272-8255 or text HELLO to 741741.

### MAVS talk

24 HOUR CRISIS LINE

817-272-TALK (8255)  
 WWW.UTA.EDU/CAPS  
 303 RANSOM HALL

### UTA Library Accessibility

### On-Demand & Live Fitness Classes

### Rental Assistance Program

The [Tarrant County Rental Assistance Program](#) assists residents who have been impacted by the COVID-19 pandemic. For more details, email [renthelp@tarrantcounty.com](mailto:renthelp@tarrantcounty.com) or call [817-850-7940](tel:817-850-7940).

The Lifeline is **FREE**, confidential, and always available.

**HELP** a loved one, a friend, or yourself.

Community crisis centers answer Lifeline calls.

**NATIONAL SUICIDE PREVENTION LIFELINE**  
 1-800-273-TALK (8255)  
[suicidpreventionlifeline.org](http://suicidpreventionlifeline.org)

Learn the Warning Signs.

© 2019 National Suicide Prevention Lifeline. All rights reserved.

**Emergency Assistance Fund**  
 UTA students with a temporary financial hardship resulting from a sudden emergency [may apply for financial help](#).

**Get Microsoft 365, The Wall Street Journal and Other Apps FREE with your student email!**

How to gain access to SSW writing resources: [Advising & Student Success Canvas](#)

**UTA/Tri-C Food Pantry Distributions**  
 Currently distributing groceries on Thursdays only, from 9-11:45 a.m. and 2-4:45 p.m. To receive these grocery bags you must send an email to [utafoodpantry@gmail.com](mailto:utafoodpantry@gmail.com) to request a pickup time. Include student name, last four digits of UTA ID, requested grocery pickup time, choice of vegetarian, chicken, or any meat groceries.

If you have any questions or content suggestion for the newsletter, please contact Olga Carrillo : [Olga.carrillo@mavs.uta.edu](mailto:Olga.carrillo@mavs.uta.edu)

