

IN THE LOOP

A WEEKLY SSW STUDENT NEWSLETTER

Spring 2025 | April 7

**IMPORTANT
ANNOUNCEMENT**

**FALL
PRACTICUM
APPLICATIONS**



OPEN APRIL 28TH

Tevera Cost:

\$215+ tax online

\$286.75- UTA Bookstore



Questions?

Contact Amanda Land
amanda.land@uta.edu

OPPORTUNITIES & EVENTS



The event **Social Work Advocacy Day at the Capitol** on **April 11, 2025**, from **8 AM to 4 PM** at the Texas State Capitol in Austin. This year's theme, *"Serving All Texans: Unity Through Social Action,"* focuses on uniting social workers to advocate for positive change and equitable access to resources for all Texans. Hosted by the **Student Association of Macro Social Work (SAMSU)** and **Social Work Council Student Organizations**, this free event includes entry and transportation to Austin. **Registration is closed**, but we highly encourage you to attend if you have your own transportation!



CHILD ABUSE PREVENTION MONTH EVENTS

Hosted by the Title IV-E Project and Children and Families Curriculum Committee

- Friday, April 4- Go Blue Day**

Go Blue Day is when thousands of Texans wear blue, the official color of prevention, to show their support for ending child abuse. We are asking the SSW community to wear blue on April 4th! Share your picture on social media to raise awareness for child abuse prevention with #GoBlueDay UTA/SSW. Go Blue Day is a great opportunity to perform outreach in the community to raise awareness of Child Abuse Prevention Month.
- Child Abuse Prevention Displays**

SSW Courtyard- During the entire month of April, please visit the pinwheel display in the SSW courtyard and scan the QR code for additional information.
University Center- From April 14-25, please visit the showcase display at the UC and scan the QR code for additional information.
- FREE Training: The Ethics of Family Engagement in Child Welfare**
April 30, 2025



Child Abuse Prevention Month Events

Join the Title IV-E Project and the Children and Families Curriculum Committee for a free training about the Ethics of Family Engagement in Child Welfare!

April 30 | 11:00 am - 2:00 pm
SSW Rm 104 | Free Pizza | 3 Ethics CEU

Join Virtually Here





GRADUATING WITHIN THE NEXT YEAR?

EDGE CAREER ST

ELIGIBILITY

- MUST BE A GRADUATE STUDENT
- GRADUATING IN SPRING, SUMMER OR FALL

ENGAGEMENT REQUIREMENTS

COMPLETE 6 ENGAGEMENT ACTIVITIES WITHIN ONE YEAR BEFORE YOUR GRADUATION DATE

- MEET TWICE (2) WITH EDGE CENTER CAREER ADVISOR
- COMPLETE TWO (2) PRE-APPROVED LINKEDIN LEARNINGS
- ATTEND TWO (2) EDGE CENTER HOSTED CAREER EVENTS

Jessica Jones
 Spring 2024 - UTA

UTA

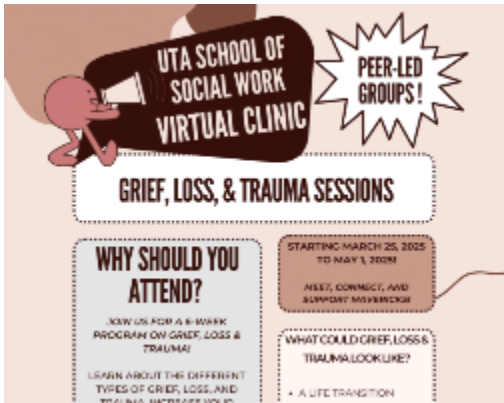


EDGE Career Graduation Stole – Earn Yours Today!

Students celebrate your commitment to career advancement with the **EDGE Career Graduation Stole!** Eligible graduate students can earn their stole by completing six career engagement activities, including career coaching, LinkedIn Learning courses, and career events.

- Who’s Eligible?** Graduate students graduating in Spring, Summer, or Fall 2025
- How to Earn It?** Attend career events, complete coaching sessions, and finish two LinkedIn Learning courses
- Upcoming Career Events Count!**

[Register Here](#)



Alert! New Groups Starting!

UTA School of Social Work Virtual Clinic: Grief, Loss, & Trauma Sessions

The Virtual Clinic is back! Sessions are every Tuesday, Wednesday, and Thursday at 12 pm and 6pm. Deepen your awareness of trauma's effects and learn practical tools and mindfulness strategies to cultivate resilience after challenging experiences.

Sessions begin March 25

[Sign up for a Session](#)



Maverick Advantage Distinction Applications will close on Friday April 18th.

Please allow 2 weeks for applications to be reviewed. After the application is reviewed and approved you will receive an email to sign up for the final step of participating in a casual interview.

If your application doesn't meet the requirements, we will reach out to you for adjustments upon review.

For More Information

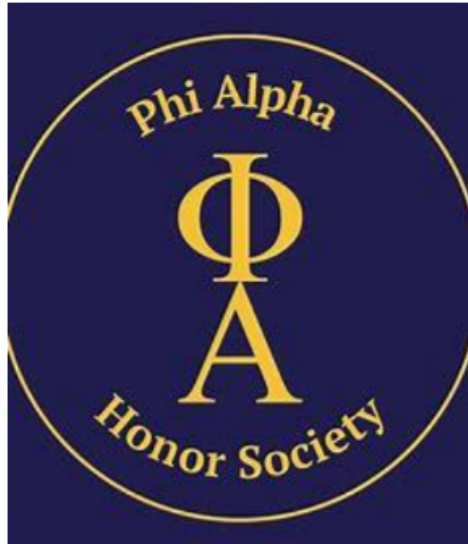


MFP—Master’s

With great excitement, we announce the launch of the 2025–2026 Master’s of Social Work (MSW) MFP Application! Applications are open March 21, 2025, and will be **accepted until May 19, 2025, at 11:59 PM (ET)**. To assist you with the application process, the MFP Team has prepared a Frequently Asked Questions document along with an Application Guidebook.

More Information

ORGANIZATION SPOTLIGHT



Phi Alpha Honor Society: Leading with Service and Impact!

Phi Alpha Honor Society is a national honor society for social work students and professionals. The society's mission is to promote humanitarian goals and ideals, as well as to recognize academic excellence in the field of social work. Phi Alpha is dedicated to honoring diversity, equality, inclusivity, justice and fostering a community where individuals from all walks of life can flourish.

Phi Alpha Honor Society members are making a real difference in our communities! From organizing advocacy initiatives and volunteer projects to supporting fellow students and fostering professional growth, our members are committed to upholding the values of social work. This semester, Phi Alpha students have been actively engaged in service projects, awareness campaigns, and collaborative efforts with local human service organizations to create lasting impact. They have also led workshops to prepare for Social Work Advocacy Day, equipping peers with the tools to engage in legislative advocacy and drive meaningful policy change. Their dedication exemplifies the power of leadership, compassion, and action in social work.

JOIN US IN MAKING A DIFFERENCE! Phi Alpha Honor Society is leading an advocacy campaign to support and promote self-sufficiency for displaced immigrants, many of whom are children, asylum seekers, and individuals recently released from immigration detention. You can help by purchasing a campaign shirt—100% of the proceeds will go toward resources that empower and uplift these individuals on their journey toward stability and independence.

Wear your support, spark conversations, and stand in solidarity with those in need. Get your shirt today and be a part of the change!

Stay tuned for more updates on their incredible contributions...



Buy a Phi Alpha Honor Society T-shirt!

To order send a **\$25 payment via Venmo to @PhiAlpha_UTA**. In the payment description, include **T-shirt size (S, M, L, XL, or 2XL)** and **your email address**. You will be contacted via the email provided to confirm your order and arrange for pickup or mailing. Thank you for supporting this important cause!

You Matter

Springing into Renewal ☐

Hello, amazing students! As we step into April, the season of renewal and growth, take a moment to reflect on your journey so far. Spring is a time when nature awakens from its slumber, and it's a perfect metaphor for your own growth and resilience.

Self-Care Tip for the Week: Engage in activities that help you feel renewed and refreshed. Whether it's taking a walk outside to enjoy the blooming flowers, practicing yoga, or simply spending time with loved ones, prioritize what nourishes your mind, body, and spirit.

You are part of a vibrant community that values growth and compassion. Keep nurturing your spirit—you matter!

SOCIAL JUSTICE SPOTLIGHT

Alfred Neumann (1910-2002)



Fred Neumann was the executive director of the Jewish Family & Children's Service of Colorado (1948-1976). He reorganized the agency's social service program and family counseling organization. He also developed programs in child placement, adoptions, and immigration services. Throughout his career, he attempted to find improved ways to resettle displaced persons. He received his doctorate juris prudence from the University of Vienna in 1934.

Following Hitler's occupation of Austria, he was critical in organizing relief to needy Jewish families, furnishing emergency housing facilities, and helping with other problems in the Jewish community. After 1938, he escaped to the United States where he later attended Columbia University and received his masters of social work. He had a small private practice after retiring from the Denver agency. June 30, 1982 was by the proclamation of the governor of Colorado, the "Dr. Alfred M. Neumann Day".

ADVISING UPDATES

UTA School of Social Work Advising FAQs can be found [here](#).

We have some changes in our Academic Advising & Practicum Offices, and we want to share those changes with you. For contact information to each person, please click [here for advisors](#) and [practicum specialist](#).

[Former Specialties]	Practicum Specialists	[New] Letters	Advisor
BSW/BSSUT	Dimekia Hicks	<i>no change</i>	Kyleigh Easter; Daisy Jones; Desiree Warren
Foundation	Vanessa Caraveo	A-D	George Jauss
Children & Families	Monica Brown	E-K	Meverlyn Maisonave
Aging, CAP, Health	Cindy Bassey	L-P	Cleondria Marable
MH	Sharon Martin	Q-Z	Tara Harris

We also have a Same Day advisor who can assist BSW, BSSUT, and MSW students and his information is below:

Same Day Advisors: Matthew Williams & Keiana Crain

If you need immediate assistance, please contact the Student Affairs Administrative Assistant,
Emily Rappaport (emily.rappaport@uta.edu).

IMPORTANT DATES

- **April 11:** Social Work Advocacy Day
- **April 7:** Registration opens for Summer 2025 & Fall 2025
- **April 11:** Gerontology Annual Luncheon
- **April 29:** Last day of classes
- **April 30:** Student Study Day (no classes)
- **May 1 - May 7:** Final exams
- **May 5:** Last day to earn hours
- **May 7:** Last day of term
- **May 8:** Celebration of Excellence 6p-8p
- **May 9:** Commencement Ceremonies
- **May 12:** Grades due
- **August 7:** SW Graduation at College Park

STUDENT SUCCESS



EDGE Center

The EDGE Center is a graduate student resource center developed to support the continuous success of post baccalaureate students at the University of Texas at Arlington. The EDGE Center aims to foster a well-rounded graduate experience, creating programs and resources that support a healthy school-life balance, personal/professional development, social events, and building a sense of community.

[More Information](#)

SCHOOL OF SOCIAL WORK RESOURCES

[STUDENT SUCCESS](#)

[ACADEMIC ADVISING](#)

[PRACTICUM PLACEMENT](#)

[LICENSURE](#)

[DEAN'S LETTER FOR LICENSURE](#)

UTA RESOURCES

- [UTA Academic Calendar](#)
- [Webinar Library](#)

- [UTA Counseling & Psychology Services \(CAPS\)](#)
- [SAR Center](#)

- [Suicide Prevention Lifeline](#)
- [Free Windows Apps with Student ID](#)
- [Emergency Assistance Fund](#)
- [Free & Confidential HIV Testing](#)
- [UTA/Tri-C Food Pantry Distribution](#)

Follow UTA School of Social Work on Social Media:



[Manage](#) your preferences | [Opt Out](#) using TrueRemove™

Got this as a forward? [Sign up](#) to receive our future emails.

View this email [online](#).

501 West Mitchell Street Box 19129 | Arlington, TX 76010 US

This email was sent to .

To continue receiving our emails, add us to your address book.

emma®

[Subscribe](#) to our email list.